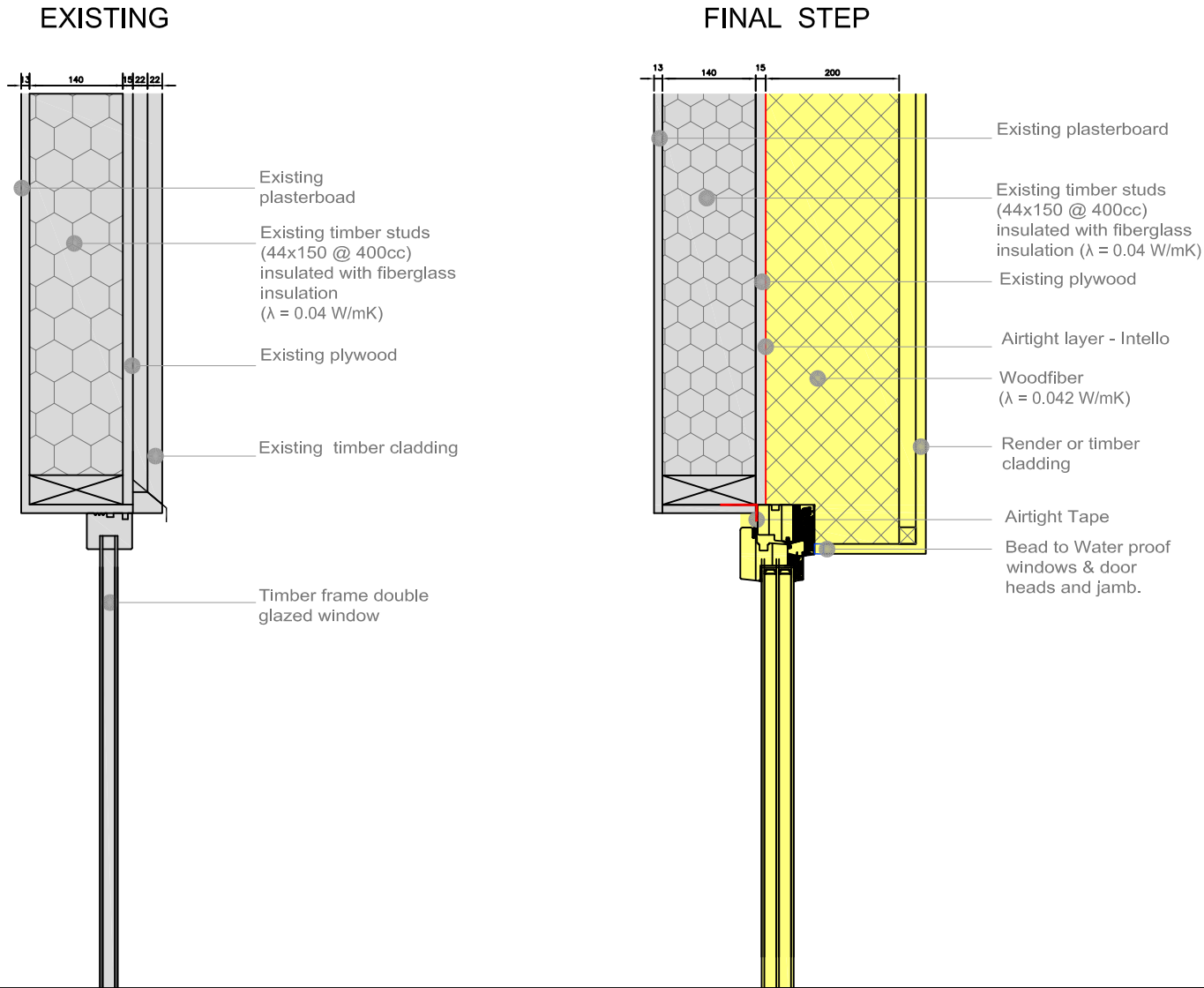


EuroPHit_OP21_MosArt_Family Home_Ireland

Scale 1:10 @ A4
 Author Mariana Moreira
 Date 16.03.2016



WITO02 Window head detail for timber frame wall



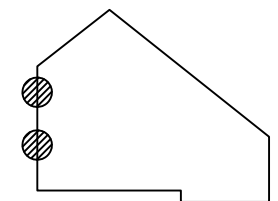
COLOR CODE

- Existing building
- Step 1
- Step 2
- Step 3
- Step 4
- temporary works (in between steps)

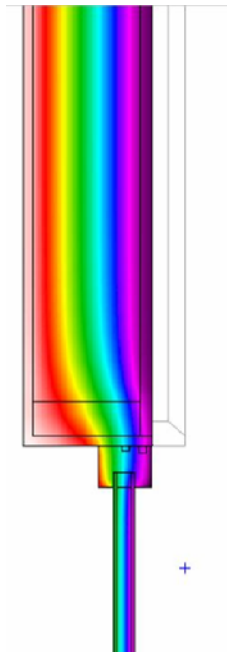
Airtight layer

DESCRIPTION/CHALLENGES

In order to assure a continuous airtight line, it has been decided to keep the airtight layer along the outside of the existing timber frame wall that will be further insulated with wood fiber boards in the second step of the Step by Step retrofit works. The airtight layer will be on the warm side of the wall build up.



EXISTING



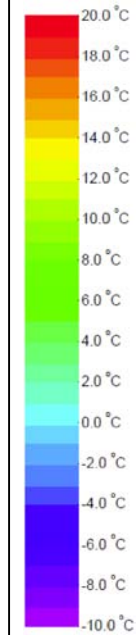
Ψ - value [W/mK] = 0.078

FINAL STEP



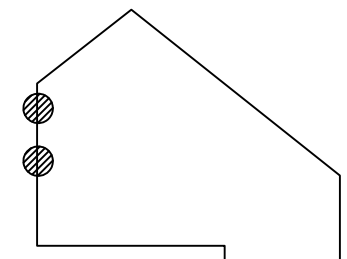
Ψ - value [W/mK] = 0.019

COLOR CODE



DESCRIPTION/CHALLENGES

In order to assure a continuous airtight line, it has been decided to keep the airtight layer along the outside of the existing timber frame wall that will be further insulated with wood fiber boards in the second step of the Step by Step retrofit works. The airtight layer will be on the warm side of the wall build up.



EuroPHit_OP21_MosArt_Family Home_Ireland

Scale -

Author Mariana Moreira

Date 16.03.2016



WITO02 Window head detail for timber frame wall - Site Photo

BEFORE

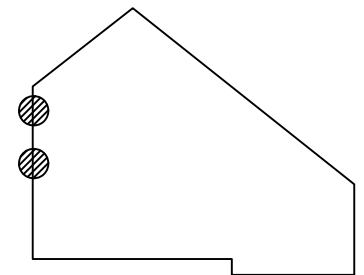


AFTER

Retrofit works for this detail will be carried out as part of the final step of the Step by Step retrofit.

DESCRIPTION/CHALLENGES

In order to assure a continuous airtight line, it has been decided to keep the airtight layer along the outside of the existing timber frame wall that will be further insulated with wood fiber boards in the second step of the Step by Step retrofit works. The airtight layer will be on the warm side of the wall build up.



Co-funded by the Intelligent Energy Europe Programme of the European Union

The sole responsibility for the content of this publication lies with the authors. It does not necessarily reflect the opinion of the European Union. Neither the EACI nor the European Commission are responsible for any use that may be made of the information contained therein.

EuroPHit