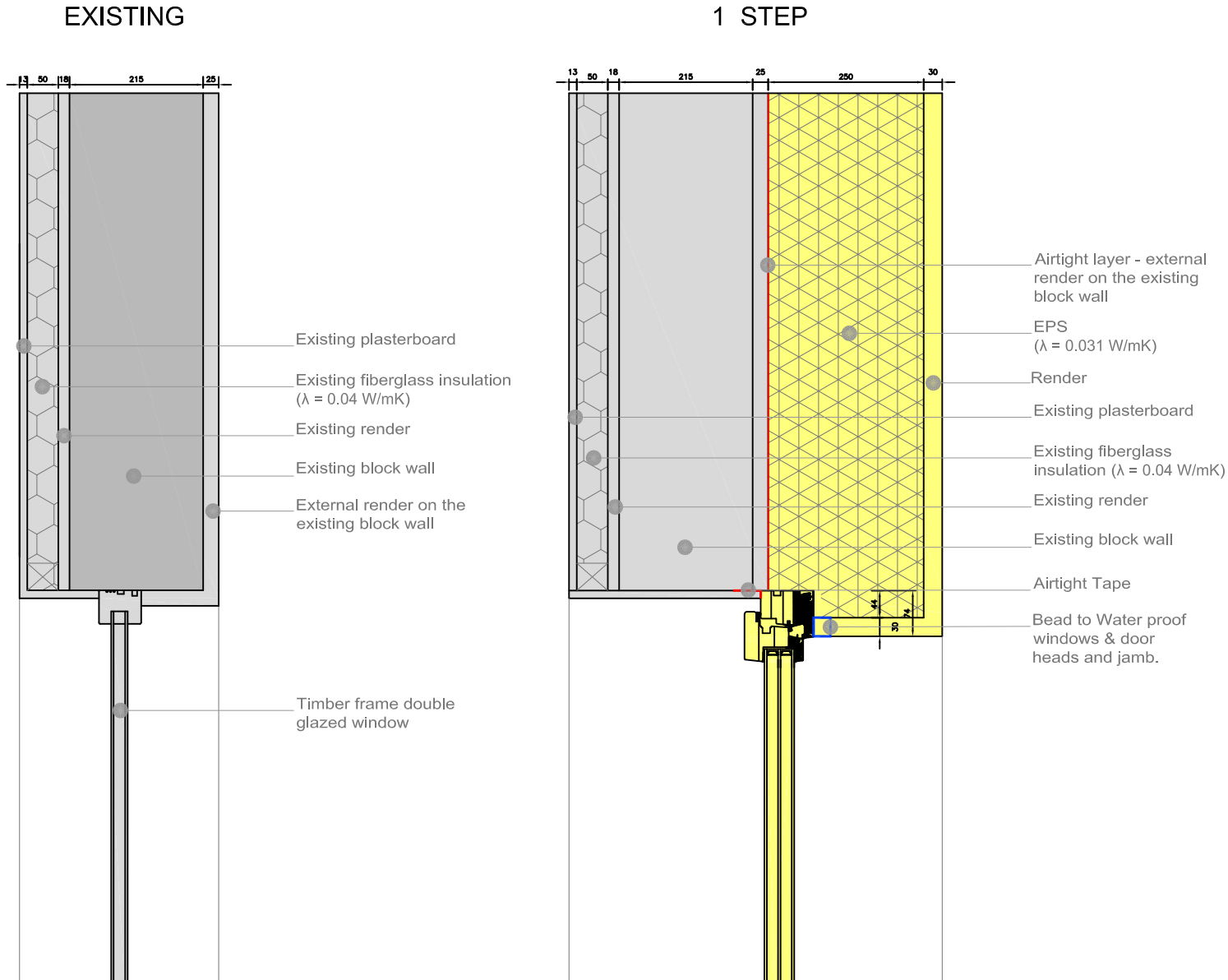


# EuroPHit\_OP21\_MosArt\_Family Home\_Ireland

Scale 1:10 @ A4  
 Author Mariana Moreira  
 Date 16.03.2016



WITO01 Window head and jamb detail for masonry wall



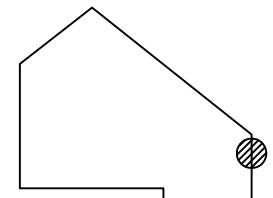
## COLOR CODE

- Existing building
- Step 1
- Step 2
- Step 3
- Step 4
- temporary works (in between steps)

## Airtight layer

## DESCRIPTION/CHALLENGES

In order to assure a continuous airtight line, it has been decided to keep the airtight layer along the outside of the existing block wall as the render. The render is connected with the window frame with an airtight tape.



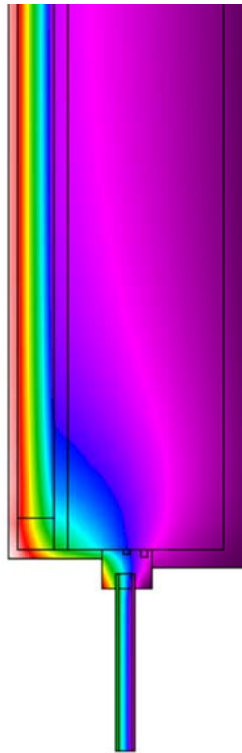
# EuroPHit\_OP21\_MosArt\_Family Home\_Ireland

Scale 1:10 @ A4  
 Author Mariana Moreira  
 Date 16.03.2016



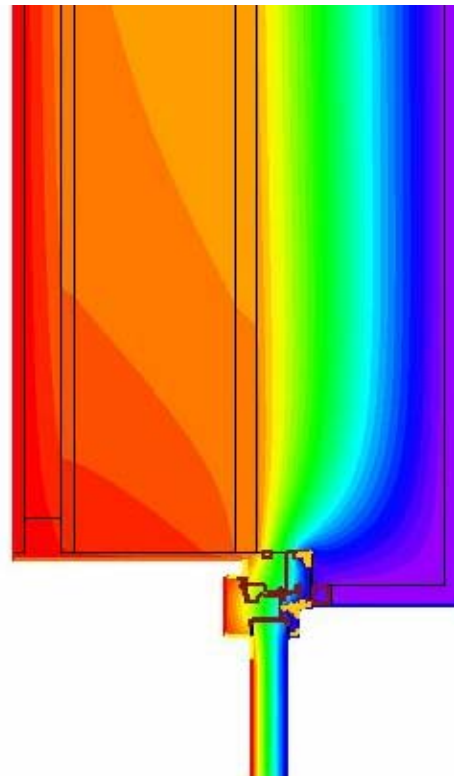
WITO01 Window head and jamb detail for masonry wall - THERM

EXISTING



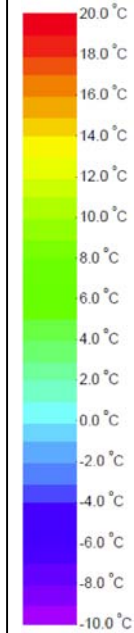
$\Psi$  - value [W/mK] = 0.252

FINAL STEP



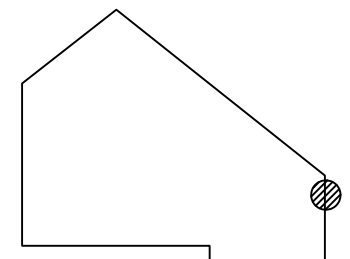
$\Psi$  - value [W/mK] = 0.025

COLOR CODE



DESCRIPTION/CHALLENGES

In order to assure a continuous airtight line, it has been decided to keep the airtight layer along the outside of the existing block wall as the render. The render is connected with the window frame with an airtight tape.



# EuroPHit\_OP21\_MosArt\_Family Home\_Ireland

Scale	-
Author	Mariana Moreira
Date	16.03.2016



WITO01 Window head and jamb detail for masonry wall - Site Photo

BEFORE

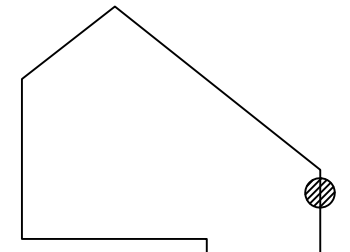


AFTER



## DESCRIPTION/CHALLENGES

In order to assure a continuous airtight line, it has been decided to keep the airtight layer along the outside of the existing block wall as the render. The render is connected with the window frame with an airtight tape. The external insulation overlaps the frame by 44mm reducing the heat loss through the frame at jamb and head.



Co-funded by the Intelligent Energy Europe Programme of the European Union

The sole responsibility for the content of this publication lies with the authors. It does not necessarily reflect the opinion of the European Union. Neither the EACI nor the European Commission are responsible for any use that may be made of the information contained therein.

**EuroPHit**