

EuroPHit_OP21_MosArt_Family Home_Ireland

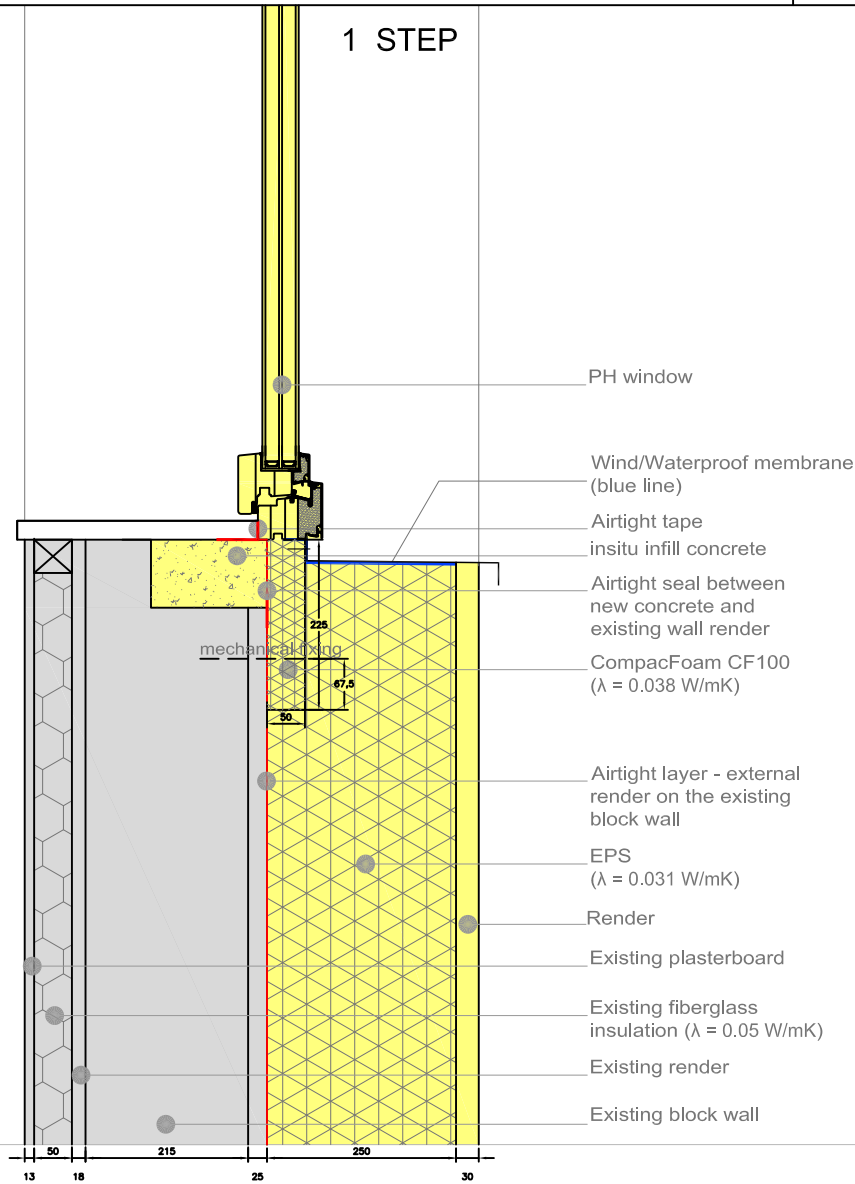
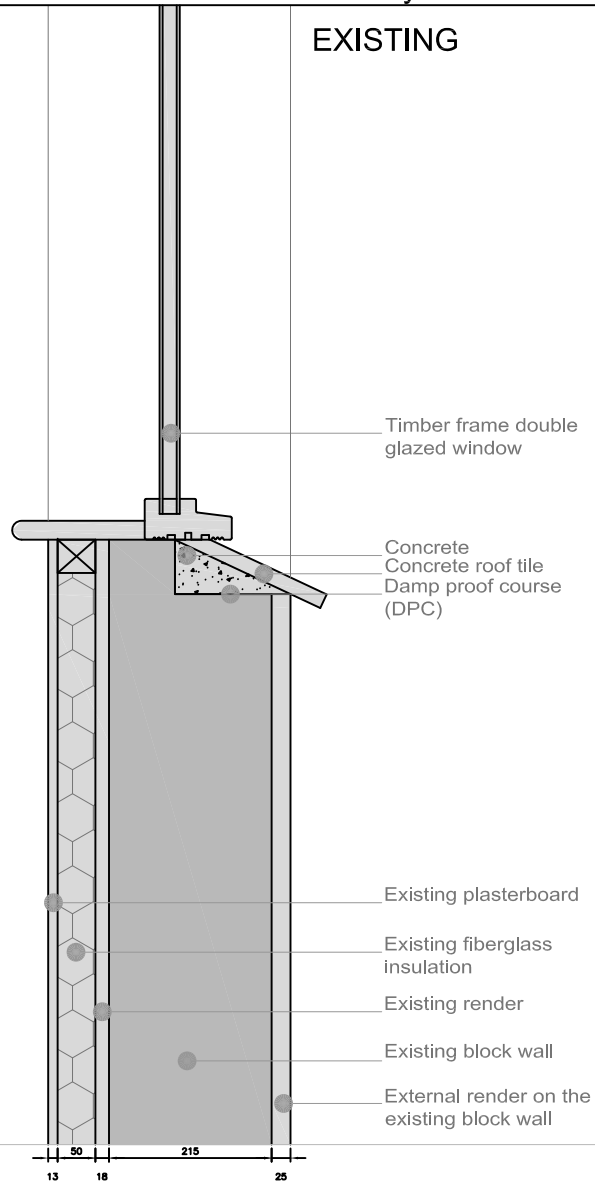
Scale 1:10 @ A4
 Author Mariana Moreira
 Date 26.02.2016



WIBO02 Window cill detail for masonry wall

EXISTING

1 STEP



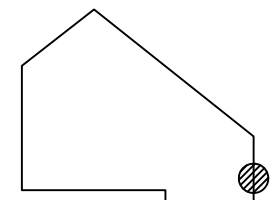
COLOR CODE

- Existing building
- Step 1
- Step 2
- Step 3
- Step 4
- temporary works (in between steps)

Airtight layer

DESCRIPTION/CHALLENGES

In order to assure a continuous airtight line, it has been decided to keep the airtight layer along the outside of the existing block wall as the render. The render is connected with the window frame with an airtight tape.



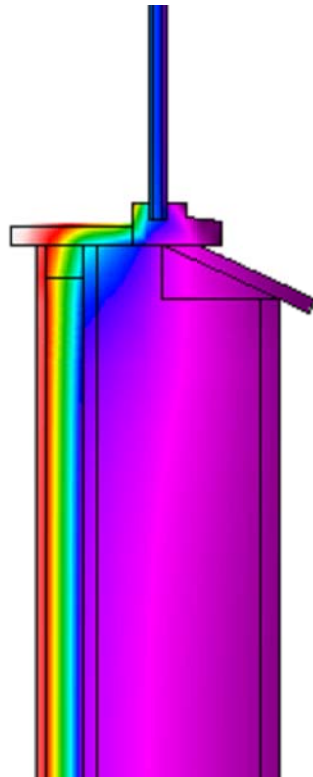
EuroPHit_OP21_MosArt_Family Home_Ireland

Scale 1:10 @ A4
 Author Mariana Moreira
 Date 26.02.2016



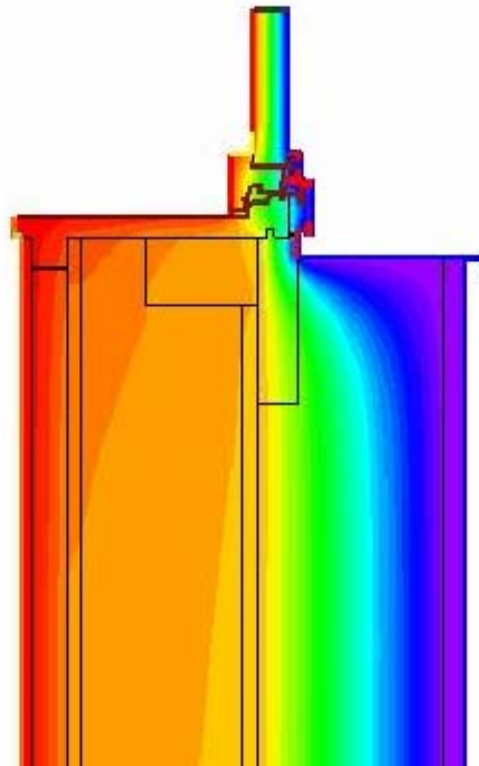
WIBO02 Window cill detail for masonry wall - THERM

EXISTING



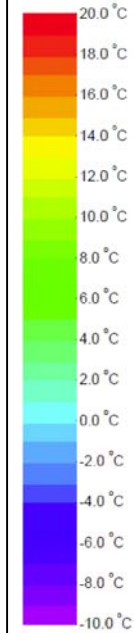
Ψ - value [W/mK] = 0.188

FINAL STEP



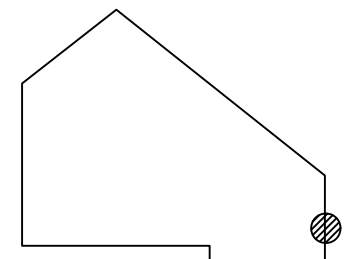
Ψ - value [W/mK] = 0.044

COLOR CODE



DESCRIPTION/CHALLENGES

In order to assure a continuous airtight line, it has been decided to keep the airtight layer along the outside of the existing block wall as the render. The render is connected with the window frame with an airtight tape.



Co-funded by the Intelligent Energy Europe Programme of the European Union

The sole responsibility for the content of this publication lies with the authors. It does not necessarily reflect the opinion of the European Union. Neither the EACI nor the European Commission are responsible for any use that may be made of the information contained therein.

EuroPHit

EuroPHit_OP21_MosArt_Family Home_Ireland

Scale -

Author Mariana Moreira

Date 26.02.2016



WIBO02 Window sill detail for masonry wall - Site Photo

BEFORE



AFTER



DESCRIPTION/CHALLENGES

In order to assure a continuous airtight line, it has been decided to keep the airtight layer along the outside of the existing block wall as the render. The render is connected with the window frame with an airtight tape. The external insulation overlaps the frame by 44mm reducing the heat loss through the frame at jamb and head.



Co-funded by the Intelligent Energy Europe Programme of the European Union

The sole responsibility for the content of this publication lies with the authors. It does not necessarily reflect the opinion of the European Union. Neither the EACI nor the European Commission are responsible for any use that may be made of the information contained therein.

EuroPHit

