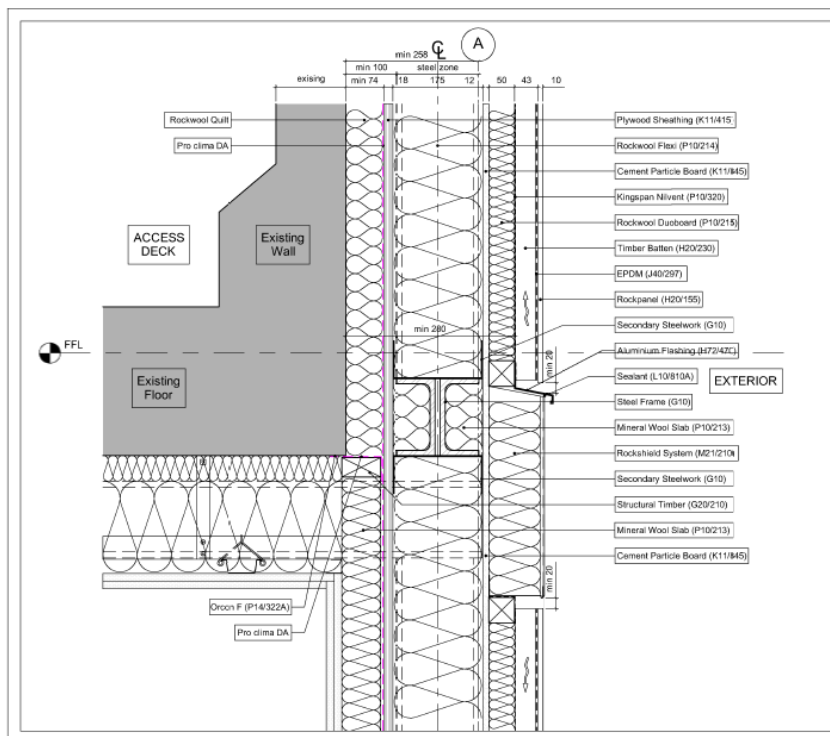


# CS14\_Wilmcote House\_United Kingdom

Author Steven Stenlund  
BRE

## 1.2.2 Tie back beams at balcony floor level

Date March 2015



- Notes:
1. Do not alter the drawing, steel beam placement and insulation to match dimensions on the plan from construction until notified in writing of any discrepancy.
  2. This drawing is to be used in conjunction with all other relevant contract drawings, specifications and schedules.
  3. © Sustainable By Design LLP. This drawing may be copied or used only in accordance with the terms of the project agreement.

| Rev | Date       | Comment                    |
|-----|------------|----------------------------|
| C2  | 04.08.2016 | Updated following comments |
| C1  | 07.11.2014 | Construction Issue         |

Drawing Title:

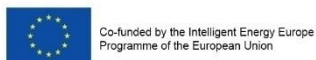
**All Bcks - Garden Side Levels 2, 4, 6, 8 & 10 Typical Facade Junction**

|                 |                                    |          |
|-----------------|------------------------------------|----------|
| Project Number  | Drawing Number                     | Revision |
| 146             | 2001                               | C2       |
| Drawing Status: | FOR CONSTRUCTION                   |          |
| Scale:          | 1:5 @ A3                           |          |
| Project Title:  | Wilmcote House Retrofit - Part 2/3 |          |
| Client:         | Kingspool Regeneration             |          |
| Date:           | 02/11/2014                         |          |
| Drawn by:       | J.Pearson                          |          |
| Checked by:     | J.Pearley                          |          |

**sustainableBYdesign**  
Sustainable By Design LLP, Webster Street Studio, 31 Webster Street, London SE1 8QW  
Tel: +44 (0) 20 3327 3890  
info@sustainablebydesign.co.uk





COLOUR CODE

DESCRIPTION/CHALLENGES



The sole responsibility for the content of this publication lies with the authors. It does not necessarily reflect the opinion of the European Union. Neither the EACI nor the European Commission are responsible for any use that may be made of the information contained therein.

**EuroPHit**

|   |   |  |                 |     |
|---|---|--|-----------------|-----|
| CS14_Wilmcote House_United Kingdom  |   | Author   | Steven Stenlund | BRE |
| 1.2.2   | <i>Tie back beams at balcony floor level – site photo</i>   | Date   | March 2015      |     |
|   | <p style="text-align: center;">BEFORE</p>  <p style="text-align: center;">AFTER</p>  | DESCRIPTION/CHALLENGES   |                 |     |
|  <p>Co-funded by the Intelligent Energy Europe Programme of the European Union</p> |   | <p>The sole responsibility for the content of this publication lies with the authors. It does not necessarily reflect the opinion of the European Union. Neither the EACI nor the European Commission are responsible for any use that may be made of the information contained therein.</p>  |                 |     |

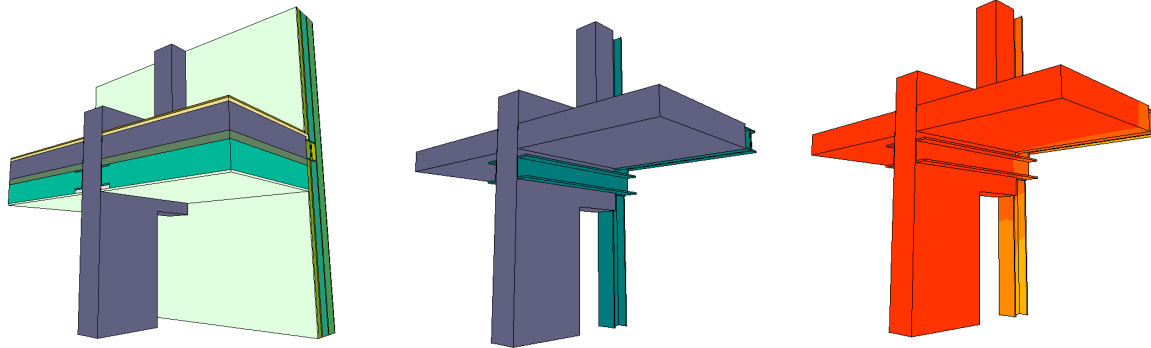
# CS14\_Wilmcote House\_United Kingdom

Author: Steven Stenlund  
BRE  
Date: March 2015

## 1.2.2 Tie back beams at balcony floor level – Thermal model

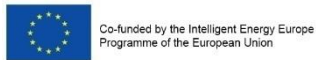
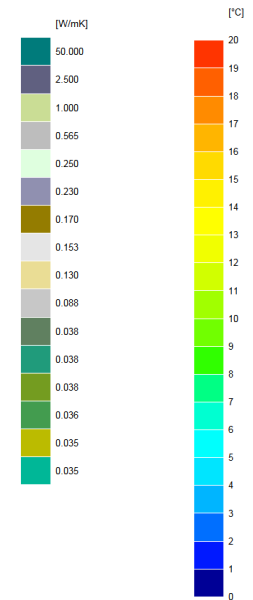
No pre-refurbishment thermal modelling undertaken

FINAL STEP



$\chi$ -value = 0.004 W/K (each tie back beam)

Colour code



The sole responsibility for the content of this publication lies with the authors. It does not necessarily reflect the opinion of the European Union. Neither the EACI nor the European Commission are responsible for any use that may be made of the information contained therein.

**EuroPHit**