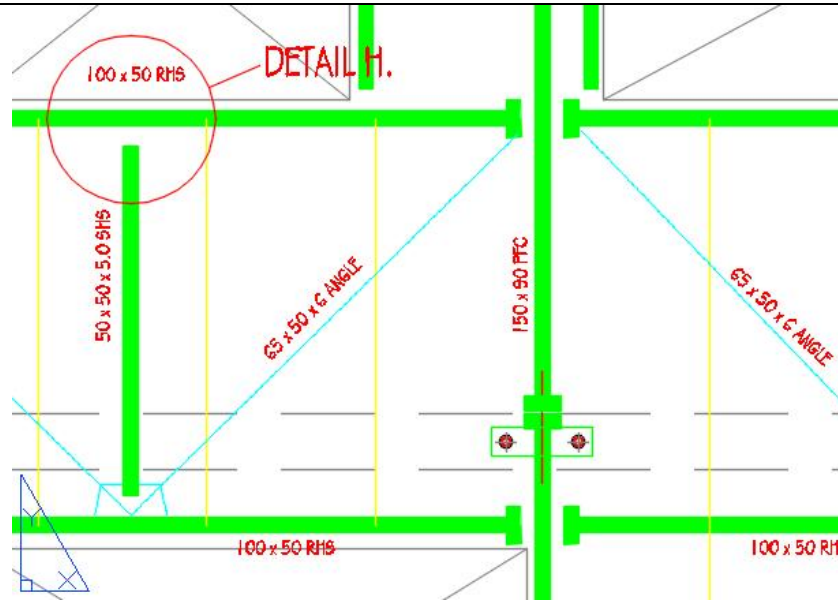


CS14_Wilmcote House_United Kingdom

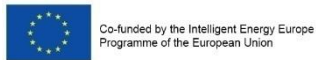
Author	Steven Stenlund	BRE
Date	March 2015	

1.2.4 Street side main steel



COLOUR CODE

DESCRIPTION/CHALLENGES



The sole responsibility for the content of this publication lies with the authors. It does not necessarily reflect the opinion of the European Union. Neither the EACI nor the European Commission are responsible for any use that may be made of the information contained therein.

EuroPHit

CS14_Wilmcote House_United Kingdom

Author	Steven Stenlund	BRE
Date	March 2015	

1.2.4 Street side main steel – site photo

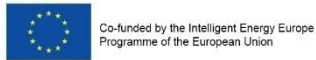
BEFORE



AFTER



DESCRIPTION/CHALLENGES



The sole responsibility for the content of this publication lies with the authors. It does not necessarily reflect the opinion of the European Union. Neither the EACI nor the European Commission are responsible for any use that may be made of the information contained therein.

EuroPHit

CS14_Wilmcote House_United Kingdom

Author Steven Stenlund
 Date March 2015
 BRE

1.2.4 Street side main steel – Thermal model

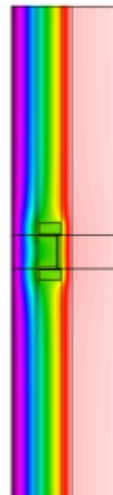
No pre-refurbishment thermal modelling undertaken

FINAL STEP

Isotherms

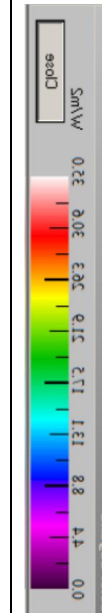
(Lines of constant temp)

Cold Outside (0°C)

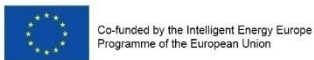


Warm Inside (20°C)

Colour code



$$\Psi\text{-value} = 0.02 \text{ W/mK}$$



The sole responsibility for the content of this publication lies with the authors. It does not necessarily reflect the opinion of the European Union. Neither the EACI nor the European Commission are responsible for any use that may be made of the information contained therein.

EuroPHit