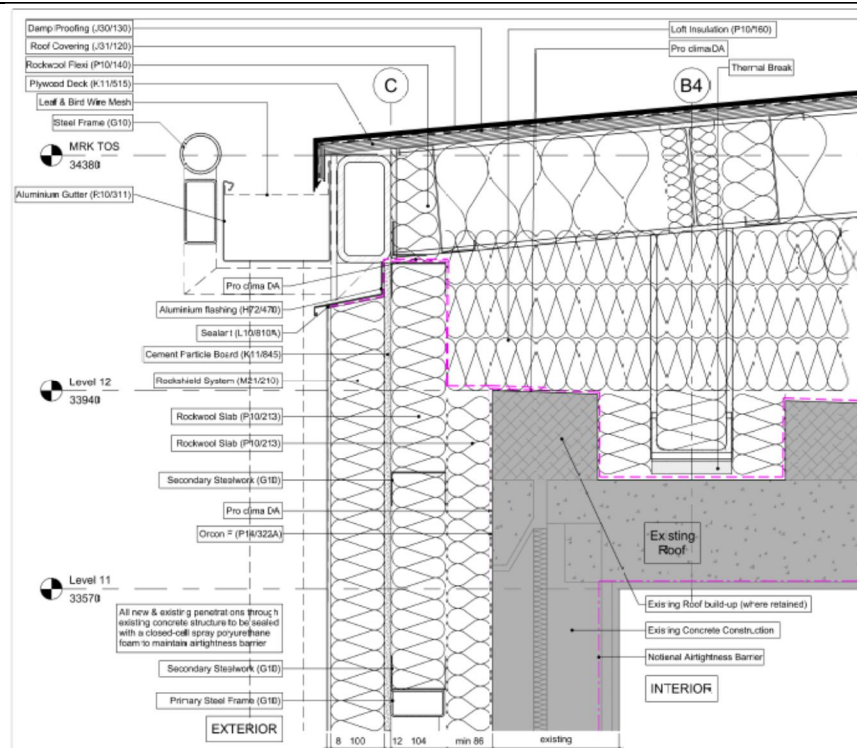


CS14_Wilmcote House_United Kingdom

Author	Steven Stenlund	BRE
Date	March 2015	

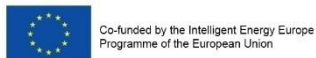
1.3.2 Street side Eaves



COLOUR CODE

DESCRIPTION/CHALLENGES

The sole responsibility for the content of this publication lies with the authors. It does not necessarily reflect the opinion of the European Union. Neither the EACI nor the European Commission are responsible for any use that may be made of the information contained therein.



EuroPHit

CS14_Wilmcote House_United Kingdom

Author Steven Stenlund BRE

1.3.2 Street side Eaves – site photo

Date March 2015

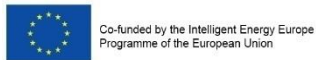
BEFORE



AFTER



DESCRIPTION/CHALLENGES



The sole responsibility for the content of this publication lies with the authors. It does not necessarily reflect the opinion of the European Union. Neither the EACI nor the European Commission are responsible for any use that may be made of the information contained therein.

EuroPHit

CS14_Wilmcote House_United Kingdom

Author	Steven Stenlund	BRE
Date	March 2015	

1.3.2 Street side Eaves – Thermal model

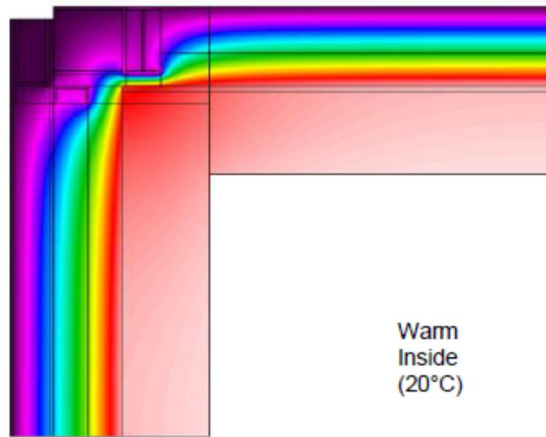
No pre-refurbishment thermal modelling undertaken

FINAL STEP

Isotherms

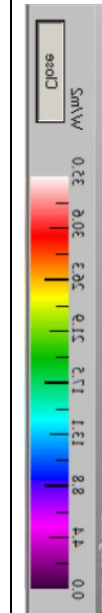
(Lines of constant temp)

Cold Outside
(0°C)

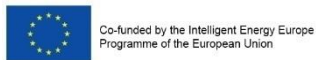


Warm Inside
(20°C)

Colour code



$$\Psi\text{-value} = 0.03 \text{ W/mK}$$



The sole responsibility for the content of this publication lies with the authors. It does not necessarily reflect the opinion of the European Union. Neither the EACI nor the European Commission are responsible for any use that may be made of the information contained therein.

EuroPHit