

EuroPHit_OP25_IGPH_Stacken_Sweden

Scale

1:10 @ A4

Author

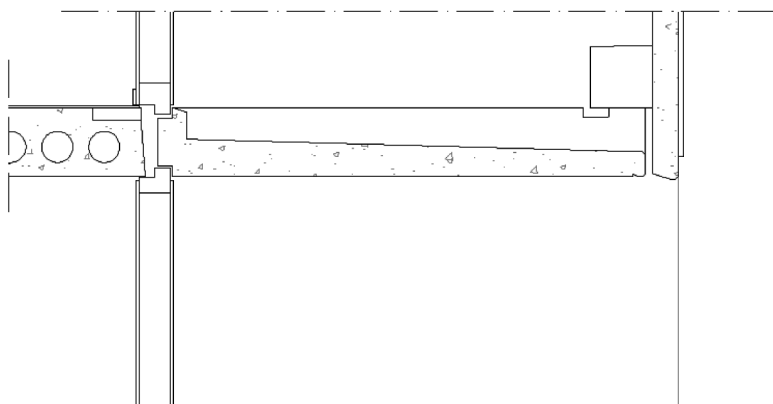
Ingo Theoboldt

Date

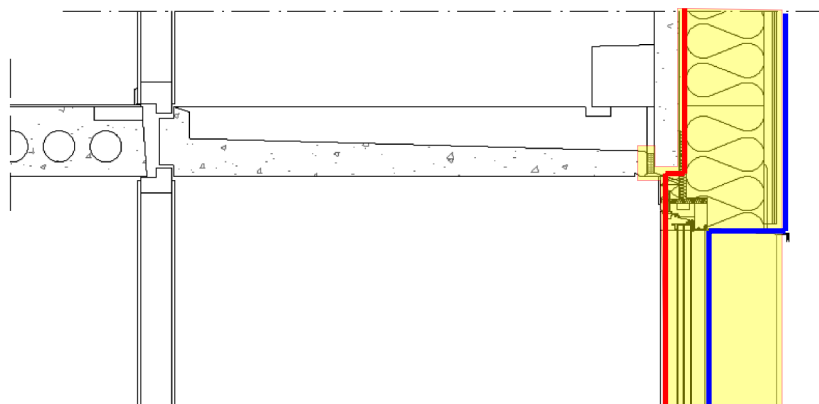


Balcony inclusion top

EXISTING



1 STEP



COLOR CODE



Existing building



Step 1



Step 2



Step 3



Step 4



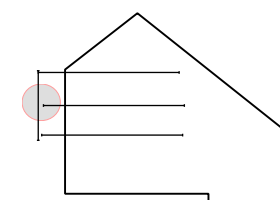
temporary works
(in between steps)

Airtight layer

Water/Windtight layer

DESCRIPTION/CHALLENGES

The balconies are incorporated into the thermal envelope to eliminate the thermal bridging and increase TFA.



Co-funded by the Intelligent Energy Europe
Programme of the European Union

The sole responsibility for the content of this publication lies with the authors. It does not necessarily reflect the opinion of the European Union. Neither the EACI nor the European Commission are responsible for any use that may be made of the information contained therein.

EuroPHit