

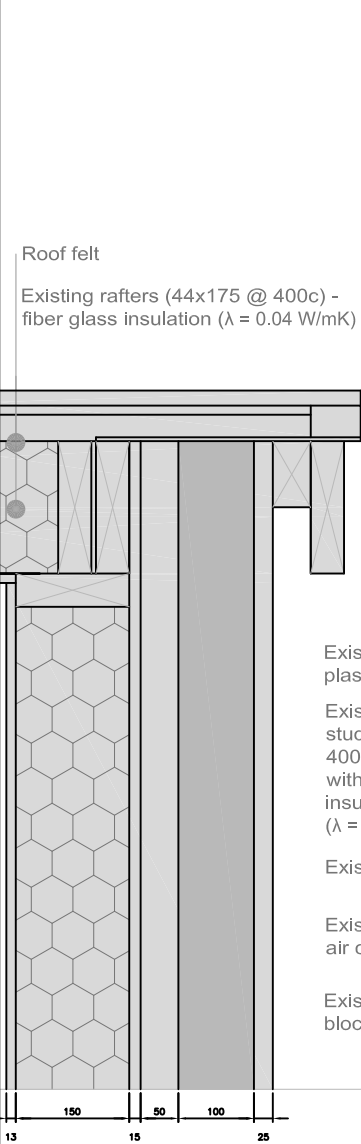
EuroPHit_OP21_MosArt_Family Home_Ireland

Scale 1:10 @ A4
 Author Mariana Moreira
 Date 16.03.2016

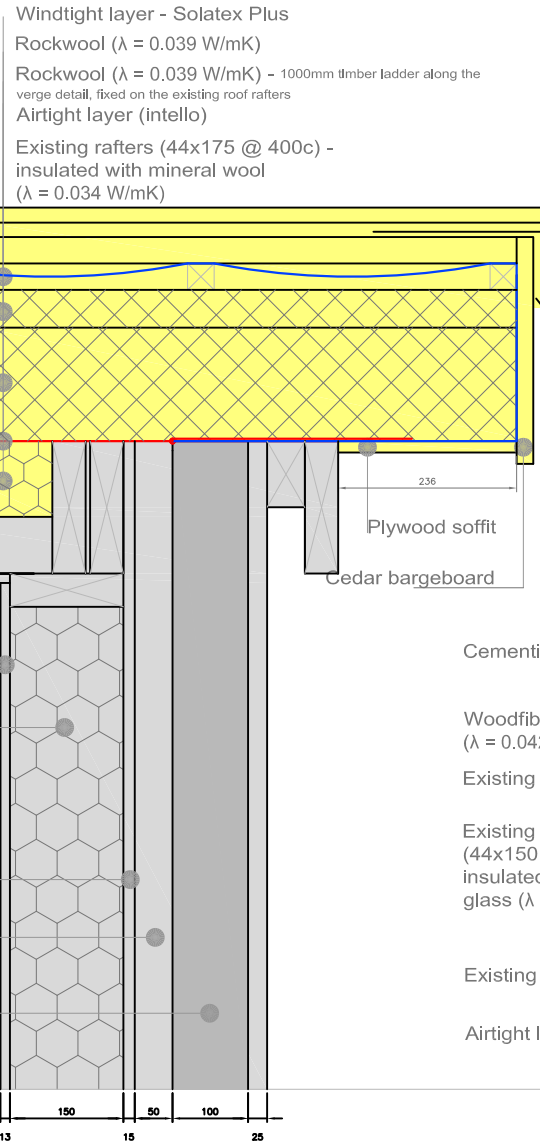


ROVE02 Verge detail for timber frame and block to be removed

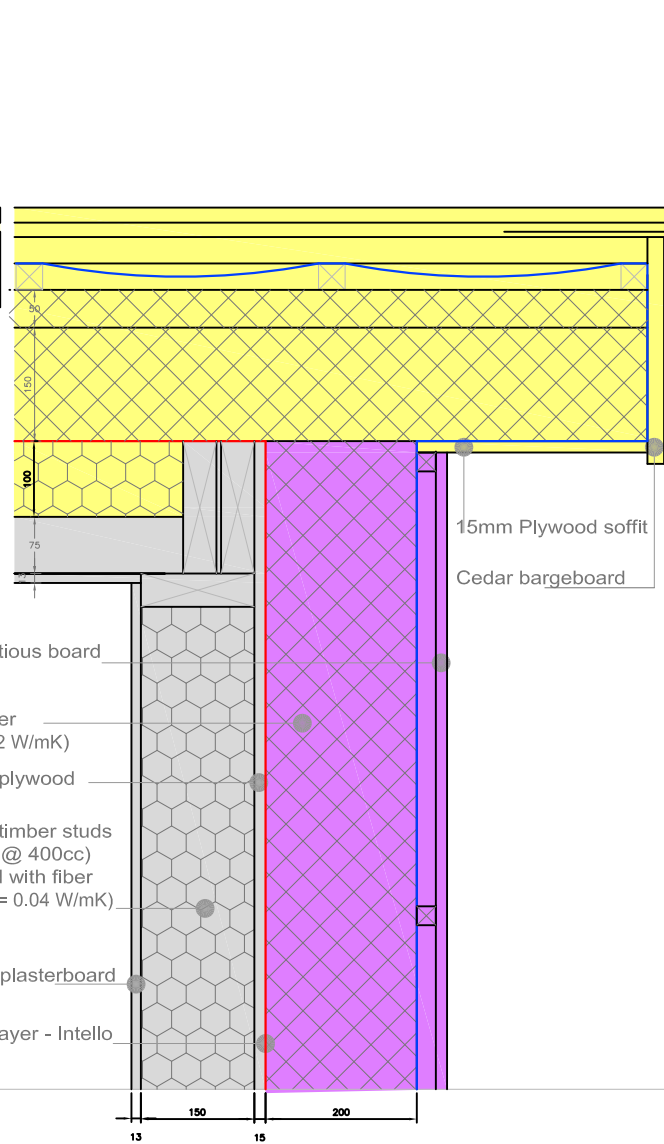
EXISTING



1 STEP



2 STEP



COLOR CODE

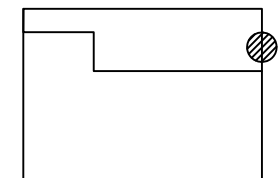
- Existing building
- Step 1
- Step 2
- Step 3
- Step 4
- temporary works (in between steps)

Airtight layer

Windtight layer

DESCRIPTION/CHALLENGES

In order to assure a continuous airtight line, it has been decided to keep the airtight layer along the outside of the existing block wall as the render, and lay on the existing roof rafters an airtight membrane that will meet the wall render at eaves and verge junctions.



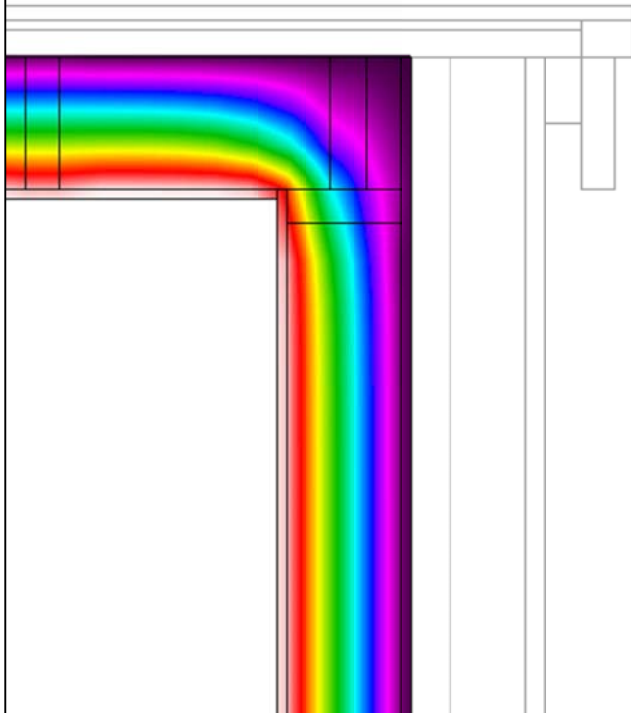
EuroPHit_OP21_MosArt_Family Home_Ireland

Scale	1:10 @ A4
Author	Mariana Moreira
Date	16.03.2016



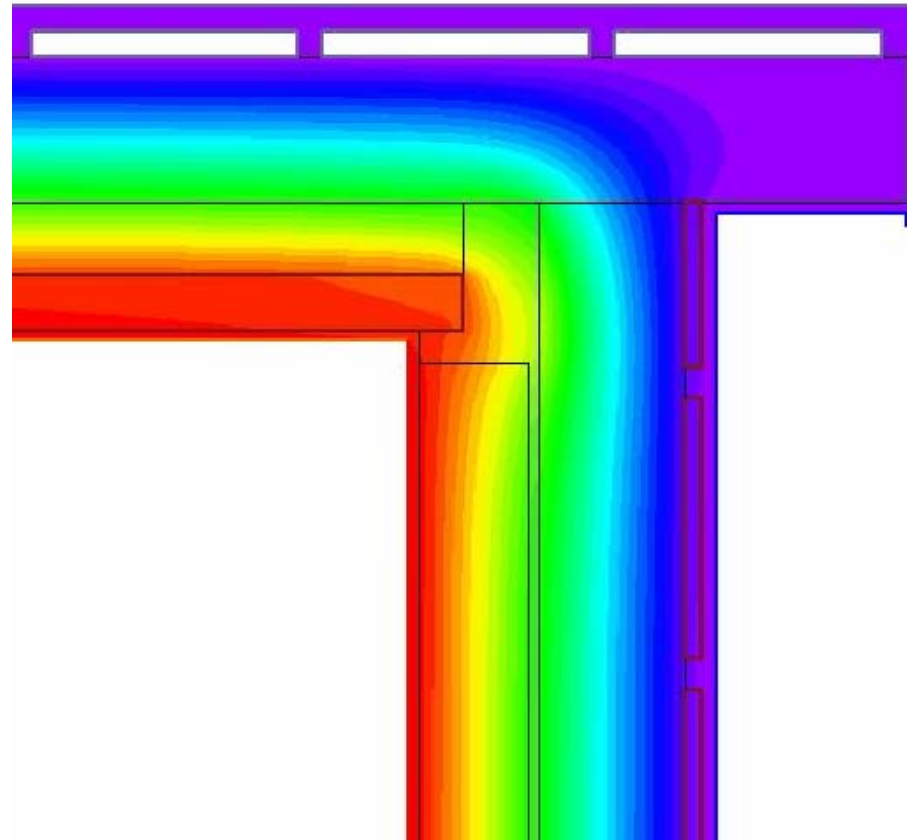
ROVE02 | Verge detail for timber frame and block to be removed - THERM

EXISTING



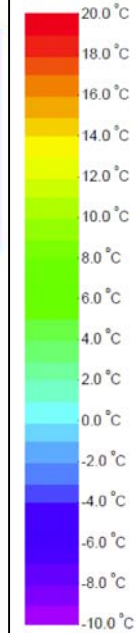
Ψ - value [W/mK] = - 0.054

FINAL STEP



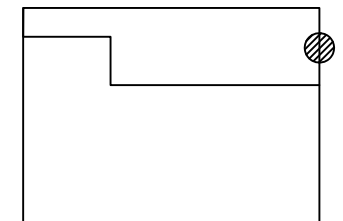
Ψ - value [W/mK] = - 0.041

COLOR CODE



DESCRIPTION/CHALLENGES

In order to assure a continuous airtight line, it has been decided to keep the airtight layer along the outside of the existing block wall as the render, and lay on the existing roof rafters an airtight membrane that will meet the wall render at eaves and verge junctions.



Co-funded by the Intelligent Energy Europe Programme of the European Union

The sole responsibility for the content of this publication lies with the authors. It does not necessarily reflect the opinion of the European Union. Neither the EACI nor the European Commission are responsible for any use that may be made of the information contained therein.

EuroPHit

EuroPHit_OP21_MosArt_Family Home_Ireland

Scale -
Author Mariana Moreira
Date 16.03.2016



ROVE02 Verge detail for timber frame and block to be removed - Site Photo

BEFORE



AFTER (STEP 1)



DESCRIPTION/CHALLENGES

In order to assure a continuous airtight line, it has been decided to keep the airtight layer along the outside of the existing block wall as the render, and lay on the existing roof rafters an airtight membrane that will meet the wall render at eaves and verge junctions.

