

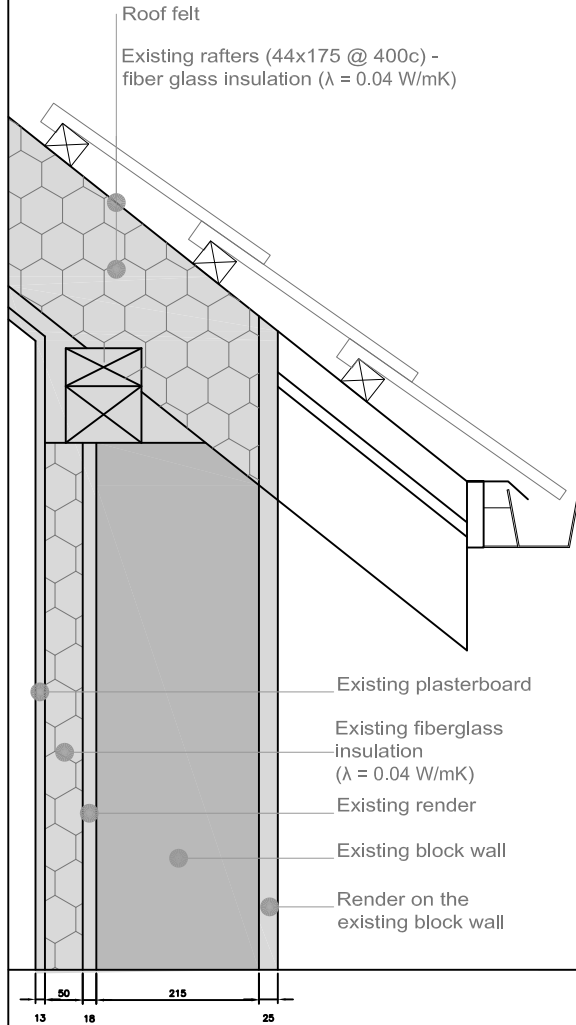
# EuroPHit\_OP21\_MosArt\_Family Home\_Ireland

Scale 1:10 @ A4  
 Author Mariana Moreira  
 Date 16.03.2016

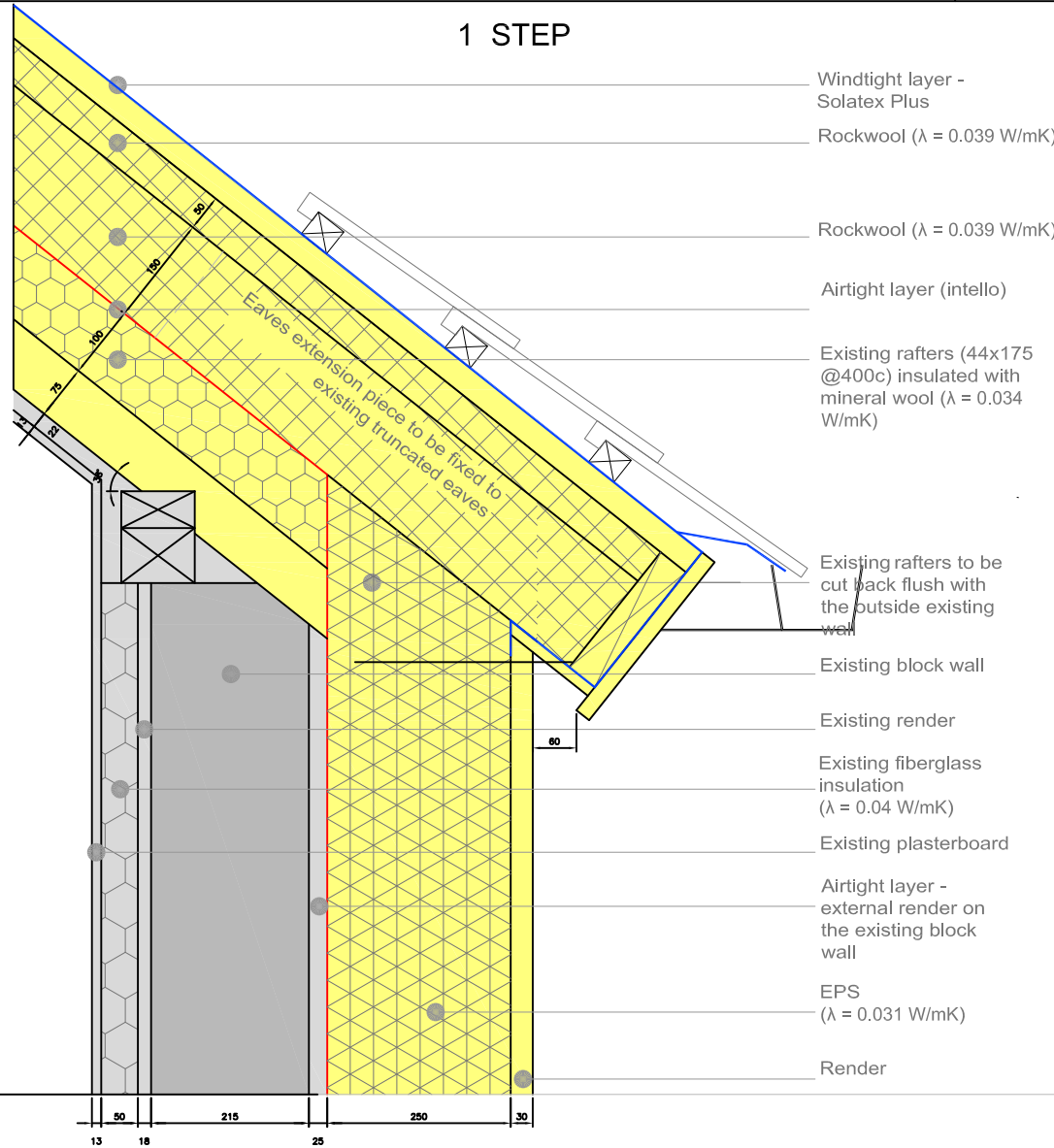


ROEA01 Eaves detail for masonry wall

EXISTING



1 STEP



COLOR CODE

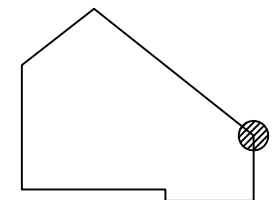
- Existing building
- Step 1
- Step 2
- Step 3
- Step 4
- temporary works (in between steps)

**Airtight layer**

**Windtight layer**

DESCRIPTION/CHALLENGES

In order to assure a continuous airtight line, it has been decided to keep the airtight layer along the outside of the existing block wall as the existing render, and lay on the existing roof rafters an airtight membrane that will join the wall render at eaves and verge junctions.



# EuroPHit\_OP21\_MosArt\_Family Home\_Ireland

Scale 1:10 @ A4

Author Mariana Moreira

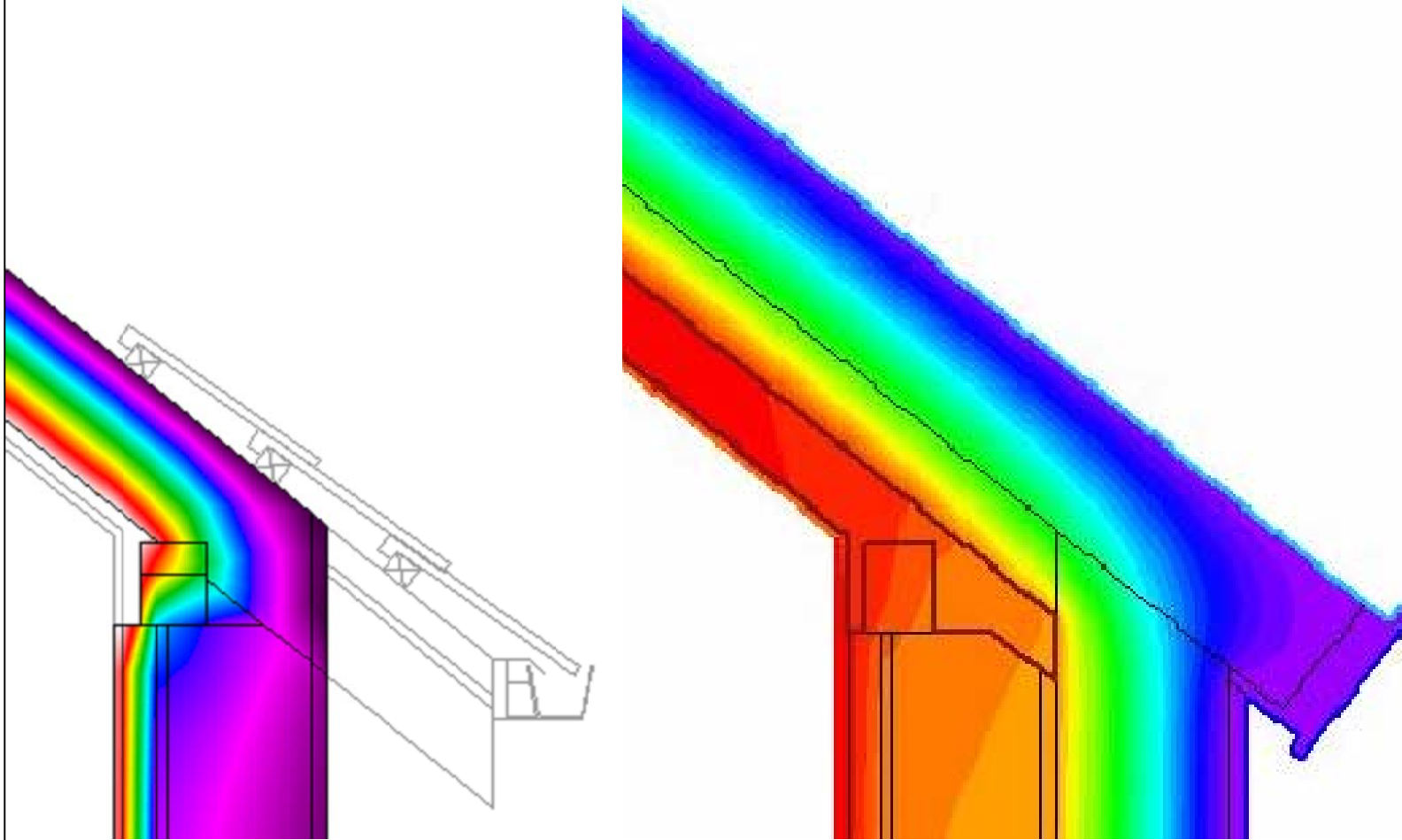
Date 16.03.2016



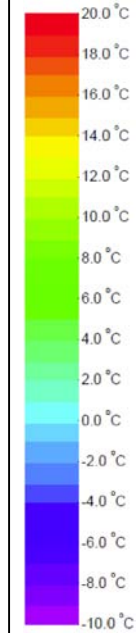
ROEA01 Eaves detail for masonry wall - THERM

EXISTING

1 STEP



COLOR CODE

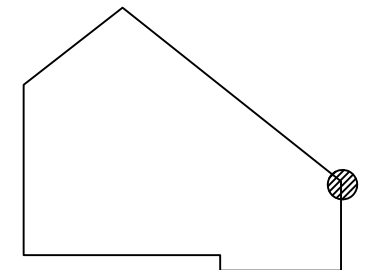


DESCRIPTION/CHALLENGES

In order to assure a continuous airtight line, it has been decided to keep the airtight layer along the outside of the existing block wall as the existing render, and lay on the existing roof rafters an airtight membrane that will join the wall render at eaves and verge junctions.

$\Psi$  - value [W/mK] = - 0.018

$\Psi$  - value [W/mK] = - 0.020



Co-funded by the Intelligent Energy Europe Programme of the European Union

The sole responsibility for the content of this publication lies with the authors. It does not necessarily reflect the opinion of the European Union. Neither the EACI nor the European Commission are responsible for any use that may be made of the information contained therein.

EuroPHit

# EuroPHit\_OP21\_MosArt\_Family Home\_Ireland

Scale	-
Author	Mariana Moreira
Date	16.03.2016



ROEA01 Eaves detail for masonry wall - Site Photo

BEFORE

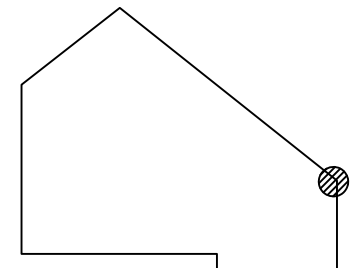


AFTER



## DESCRIPTION/CHALLENGES

In order to assure a continuous airtight line, it has been decided to keep the airtight layer along the outside of the existing block wall as the existing render, and lay on the existing roof rafters an airtight membrane that will join the wall render at eaves and verge junctions.



Co-funded by the Intelligent Energy Europe Programme of the European Union

The sole responsibility for the content of this publication lies with the authors. It does not necessarily reflect the opinion of the European Union. Neither the EACI nor the European Commission are responsible for any use that may be made of the information contained therein.

EuroPHit