

EuroPHit_OP24_ZEPHIR_La Provvidenza_Italy

Scale 1:10 @ A4

Author ZEPHIR

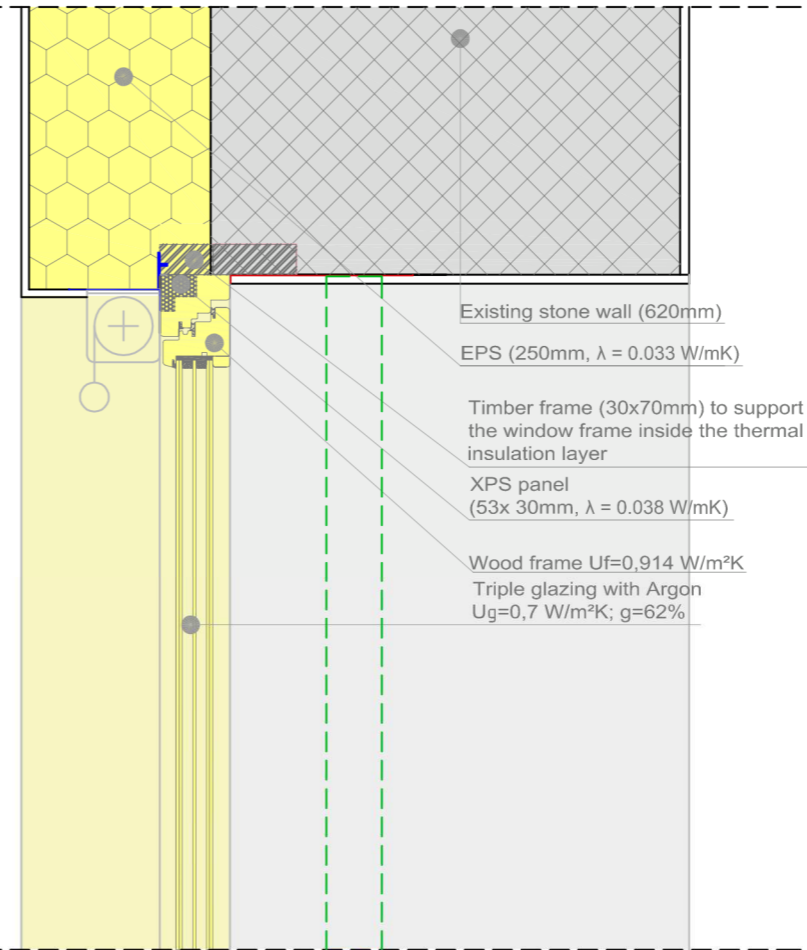
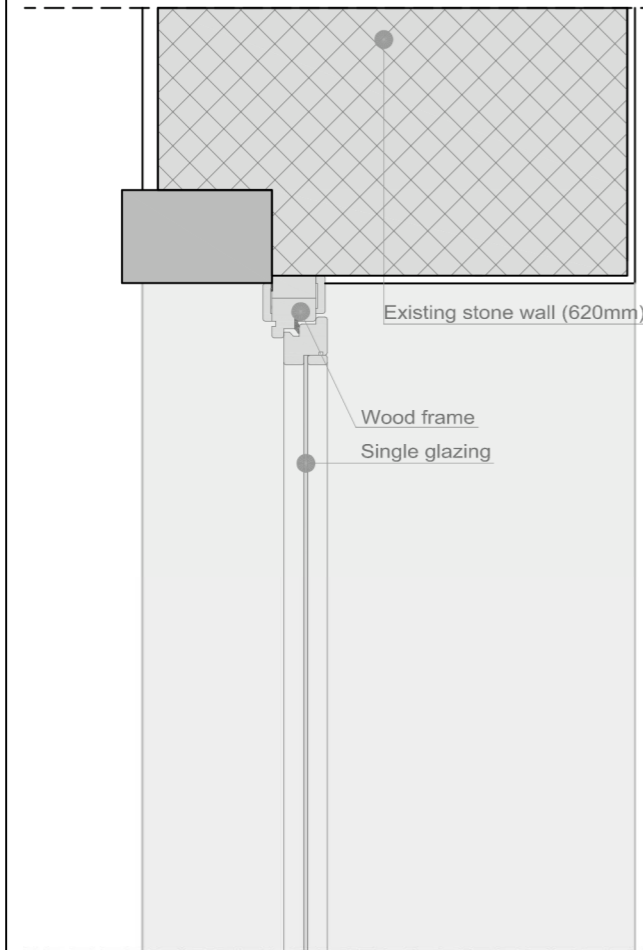
Date 23.02.2016




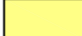



WITO Window top for a massive wall


EXISTING


1 STEP



COLOR CODE

-  Existing building
-  Step 1
-  Step 2
-  Step 3
-  Step 4

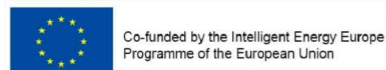
 temporary works (in between steps)

 position of the old window

Airtight layer

DESCRIPTION/CHALLENGES

The existing stone frame was removed and the new window was installed inside the thermal insulation layer. In this way the installation thermal bridge is reduced. Then, a stone frame, supported by punctual metal brackets is placed on the external side of the wall.



The sole responsibility for the content of this publication lies with the authors. It does not necessarily reflect the opinion of the European Union. Neither the EACI nor the European Commission are responsible for any use that may be made of the information contained therein.



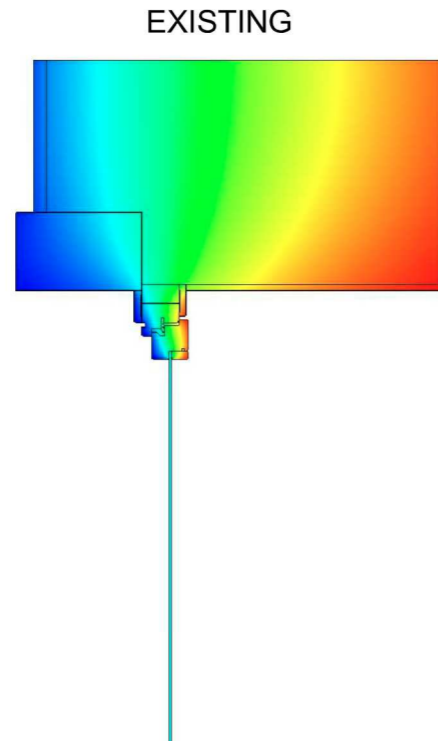
EuroPHit_OP24_ZEPHIR_La Provvidenza_Italy

WITO | Window top for a massive wall - Mold Simulator

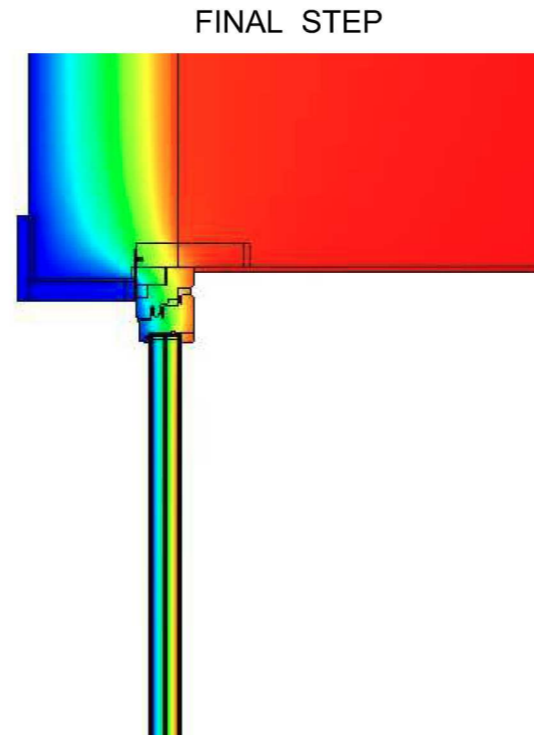
Scale | 1:10 @ A4

Author | ZEPHIR

Date | 23.02.2016



L2D = 5,71 W/mK
 Ψ inst = 0,5089 W/mK



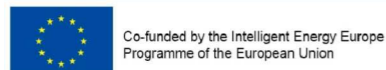
L2D = 0,89 W/mK
 Ψ inst = 0,0469 W/mK

COLOR CODE



DESCRIPTION/CHALLENGES

The existing stone frame was removed and the new window was installed inside the thermal insulation layer. In this way the installation thermal bridge is reduced. Then, a stone frame, supported by punctual metal brackets is placed on the external side of the wall.



Co-funded by the Intelligent Energy Europe Programme of the European Union

The sole responsibility for the content of this publication lies with the authors. It does not necessarily reflect the opinion of the European Union. Neither the EACI nor the European Commission are responsible for any use that may be made of the information contained therein.

EuroPHit

EuroPHit_OP24_ZEPHIR_La Provvidenza_Italy

WITO Window top for a massive wall - Site Photo

Scale -

Author ZEPHIR

Date 23.02.2016



BEFORE



AFTER



DESCRIPTION/CHALLENGES

The existing stone frame was removed and the new window was installed inside the thermal insulation layer. In this way the installation thermal bridge is reduced. Then, a stone frame, supported by punctual metal brackets is placed on the external side of the wall.



Co-funded by the Intelligent Energy Europe Programme of the European Union

The sole responsibility for the content of this publication lies with the authors. It does not necessarily reflect the opinion of the European Union. Neither the EACI nor the European Commission are responsible for any use that may be made of the information contained therein.

EuroPHit