

EuroPHit_OP24_ZEPHIR_La Provvidenza_Italy

Scale 1:50 @ A4

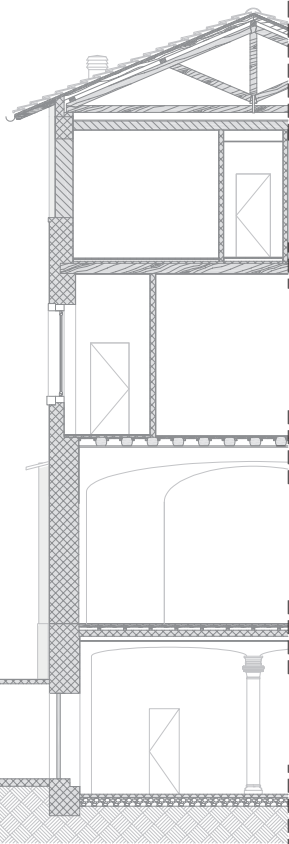
Author ZEPHIR

Date 18.03.2016

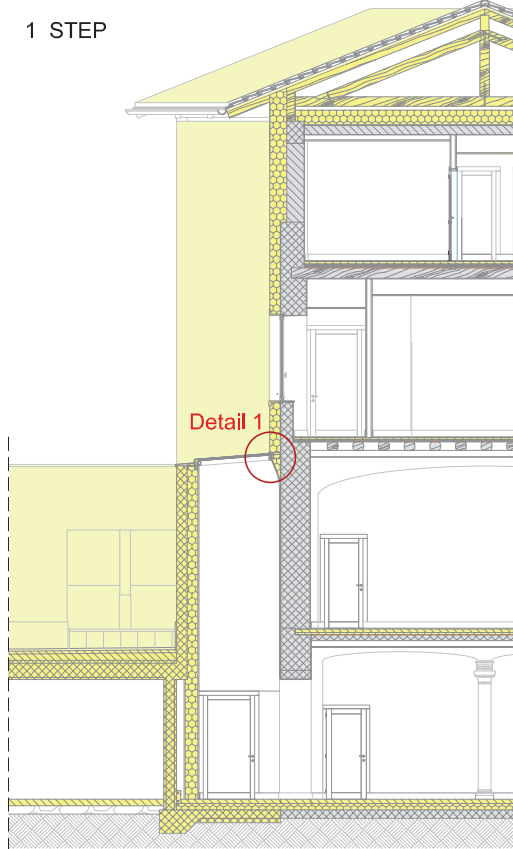


SL01 Skylight frame installation on the existing masonry wall






EXISTING




1 STEP



COLOR CODE

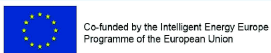
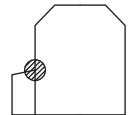
-  Existing building
-  Step 1
-  Step 2
-  Step 3
-  Step 4

 temporary works
(In between steps)

Airtight layer

DESCRIPTION/CHALLENGES

The skylight is a new element, not present in the existing building. This is located on the north façade and illuminates the long corridor near to the multipurpose room in the basement. The entire skylight is 15,5m long; It consists of 15 glasses (95x140mm). the installation of the skylight has been optimized in order to minimize the installation thermal bridge and guarantee an airtight connection.



Co-funded by the Intelligent Energy Europe Programme of the European Union

The sole responsibility for the content of this publication lies with the authors. It does not necessarily reflect the opinion of the European Union. Neither the EACI nor the European Commission are responsible for any use that may be made of the information contained therein.

EuroPHit

EuroPHit_OP24_ZEPHIR_La Provvidenza_Italy

Scale 1:10 @ A4

Author ZEPHIR

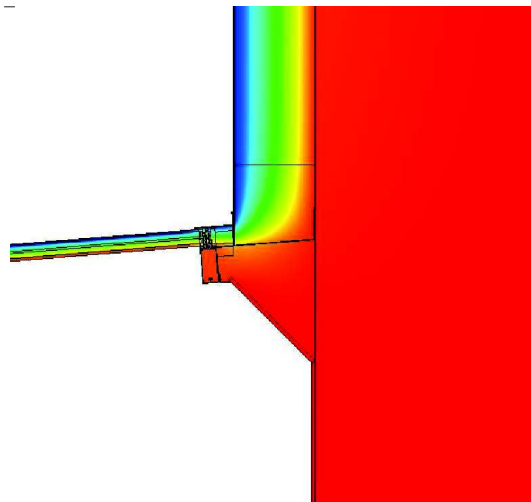
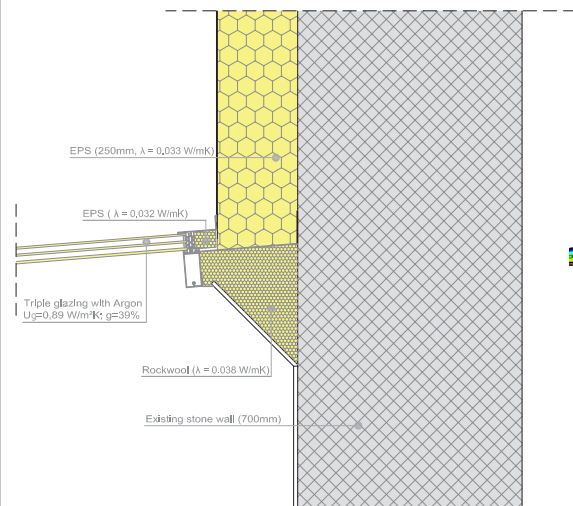
Date 18.03.2016



SL01 Skylight frame installation on the existing masonry wall - Mold Simulator

Detail 1

Detail 1 - Thermal analysis



L2D = 1,529 W/mK

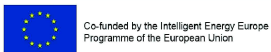
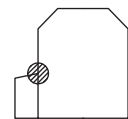
$\Psi = 0,0495$ W/mK

COLOR CODE



DESCRIPTION/CHALLENGES

The skylight is a new element, not present in the existing building. This is located on the north façade and illuminates the long corridor near to the multipurpose room in the basement. The entire skylight is 15,5m long; It consists of 15 glasses (95x140mm). the installation of the skylight has been optimized in order to minimize the installation thermal bridge and guarantee an airtight connection.




Co-funded by the Intelligent Energy Europe Programme of the European Union

The sole responsibility for the content of this publication lies with the authors. It does not necessarily reflect the opinion of the European Union. Neither the EACI nor the European Commission are responsible for any use that may be made of the information contained therein.

EuroPHit

EuroPHit_OP24_ZEPHIR_La Provvidenza_Italy

Scale	-	
Author	ZEPHIR	
Date	18.03.2016	

SL01 Skylight frame installation on the existing masonry wall - Site Photo

BEFORE

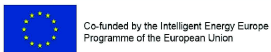
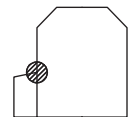


AFTER



DESCRIPTION/CHALLENGES

The skylight is a new element, not present in the existing building. This is located on the north façade and illuminates the long corridor near to the multipurpose room in the basement. The entire skylight is 15,5m long; It consists of 15 glasses (95x140mm). the installation of the skylight has been optimized in order to minimize the installation thermal bridge and guarantee an airtight connection.



The sole responsibility for the content of this publication lies with the authors. It does not necessarily reflect the opinion of the European Union. Neither the EACI nor the European Commission are responsible for any use that may be made of the information contained therein.

EuroPHit