

EuroPHit_OP24_ZEPHIR_La Provvidenza_Italy

FSEW02 | Basement wall (garage) - Floor slab connection

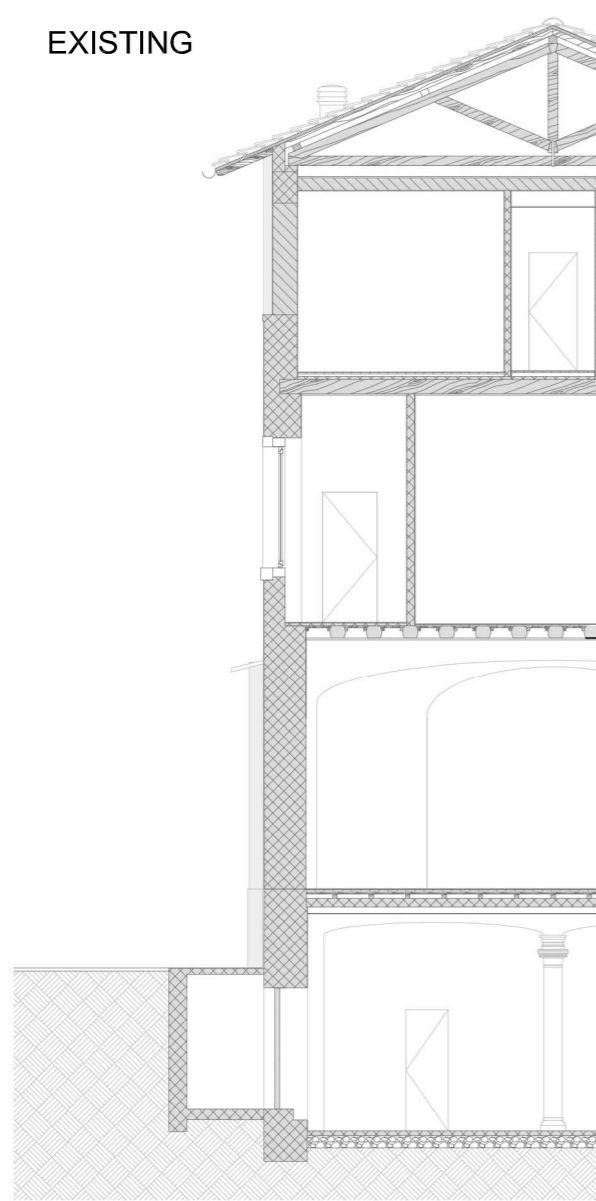
Scale 1:50 / 1:10@ A4

Author ZEPHIR

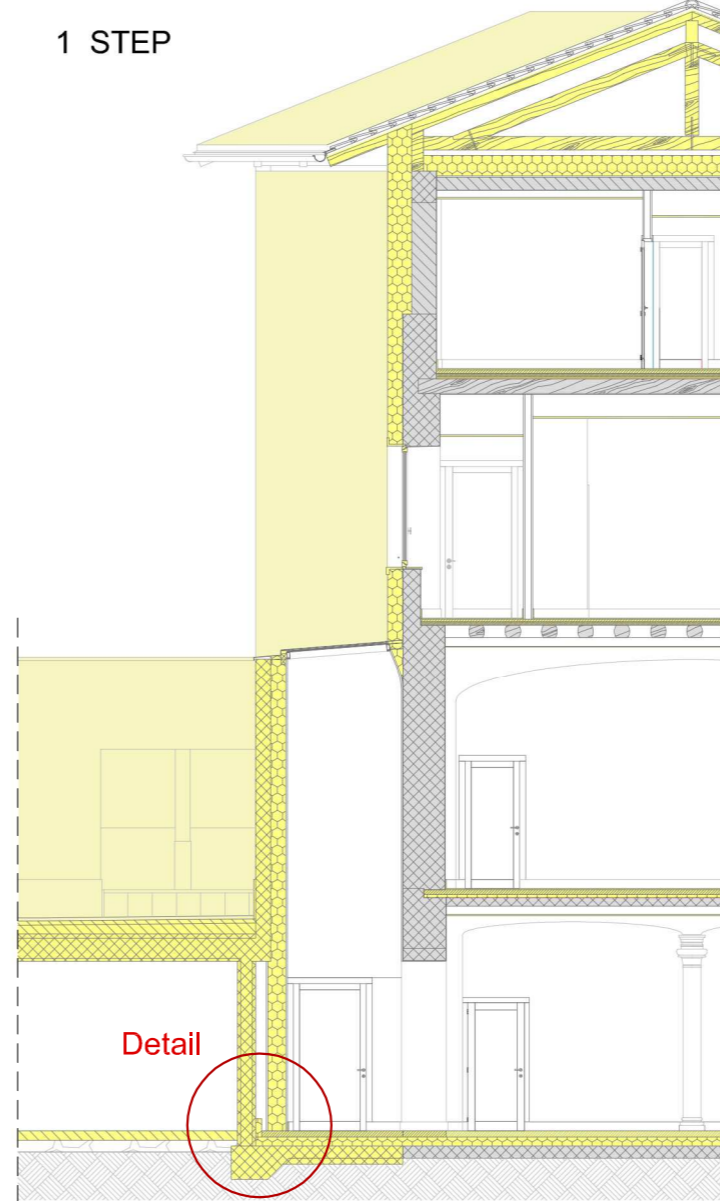
Date 29.03.2016



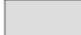



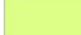
EXISTING



1 STEP



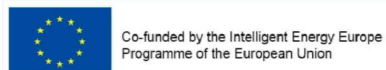
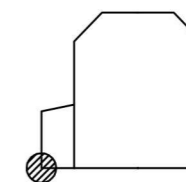
COLOR CODE

-  Existing building
-  Step 1
-  Step 2
-  Step 3
-  Step 4

Airtight layer

DESCRIPTION/CHALLENGES

The basement concrete slab is completely insulated by PIR panels (150mm). The basement wall, separating the thermal envelope from the garage, has been insulated from the inside in order to avoid possible thermal bridges. The airtightness layer of the external wall is realized with a vapour barrier placed on the internal side.



The sole responsibility for the content of this publication lies with the authors. It does not necessarily reflect the opinion of the European Union. Neither the EACI nor the European Commission are responsible for any use that may be made of the information contained therein.

EuroPHit

EuroPHit_OP24_ZEPHIR_La Provvidenza_Italy

FSEW02 | Basement wall (garage) - Floor slab connection

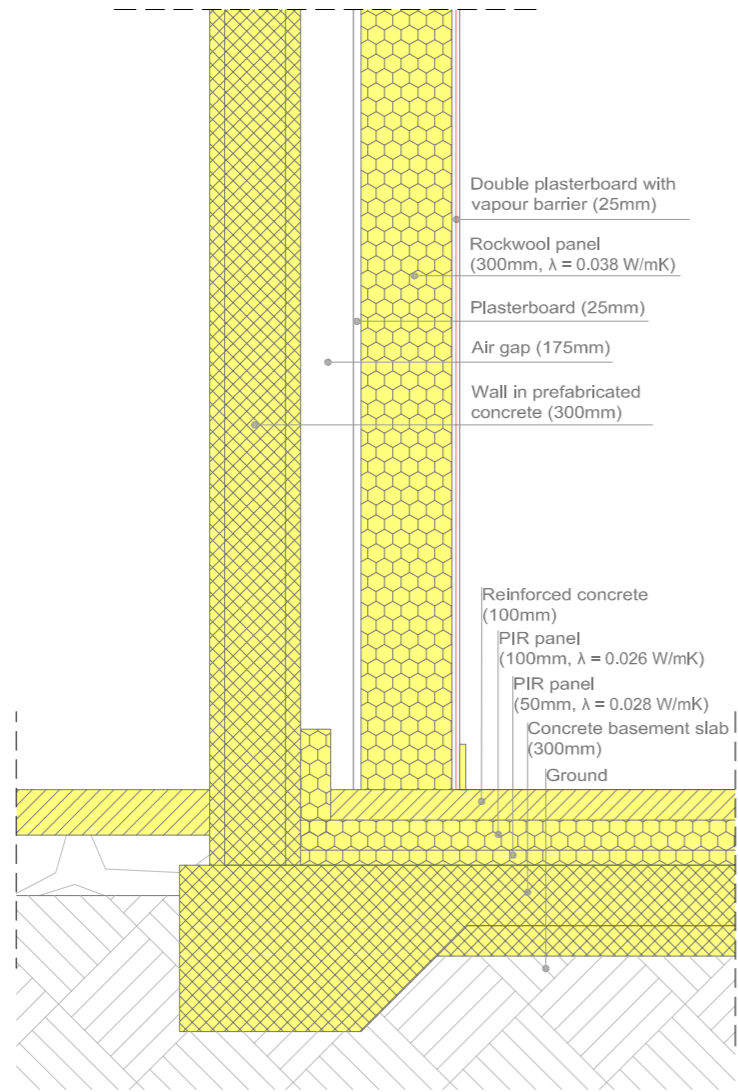
Scale | 1:10 @ A4

Author | ZEPHIR

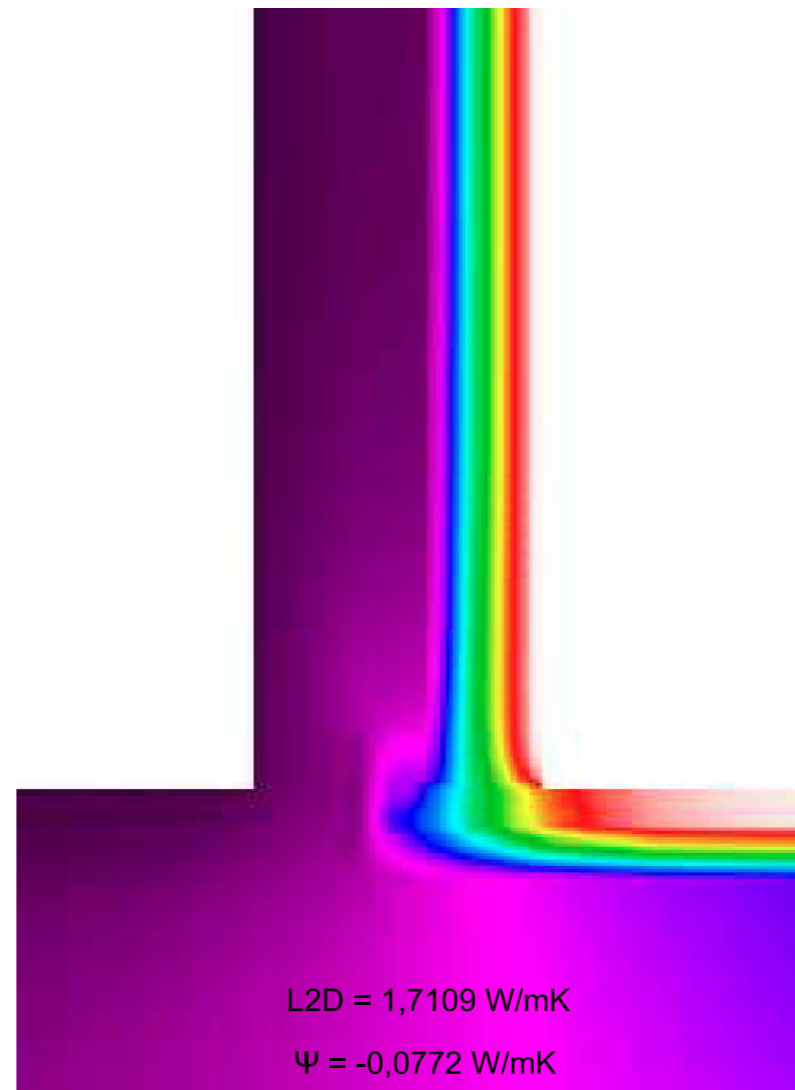
Date | 29.03.2016



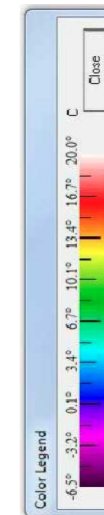
Detail



Thermal analysis

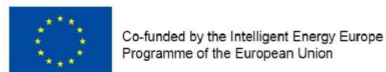
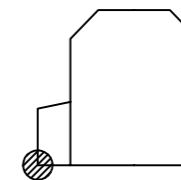


COLOR CODE



DESCRIPTION/CHALLENGES

The basement concrete slab is completely insulated by PIR panels (150mm). The basement wall, separating the thermal envelope from the garage, has been insulated from the inside in order to avoid possible thermal bridges. The airtightness layer of the external wall is realized with a vapour barrier placed on the internal side.



The sole responsibility for the content of this publication lies with the authors. It does not necessarily reflect the opinion of the European Union. Neither the EACI nor the European Commission are responsible for any use that may be made of the information contained therein.



EuroPHit_OP24_ZEPHIR_La Provvidenza_Italy

FSEW02 Basement wall (garage) - Floor slab connection

Scale -

Author ZEPHIR

Date 29.03.2016



BEFORE



AFTER



DESCRIPTION/CHALLENGES

The basement concrete slab is completely insulated by PIR panels (150mm). The basement wall, separating the thermal envelope from the garage, has been insulated from the inside in order to avoid possible thermal bridges. The airtightness layer of the external wall is realized with a vapour barrier placed on the internal side.



Co-funded by the Intelligent Energy Europe Programme of the European Union

The sole responsibility for the content of this publication lies with the authors. It does not necessarily reflect the opinion of the European Union. Neither the EACI nor the European Commission are responsible for any use that may be made of the information contained therein.

EuroPHit

