

EuroPHit_OP24_ZEPHIR_La Provvidenza_Italy

FSEW01 Basement stone wall - floor slab connection

Scale 1:20 @ A4

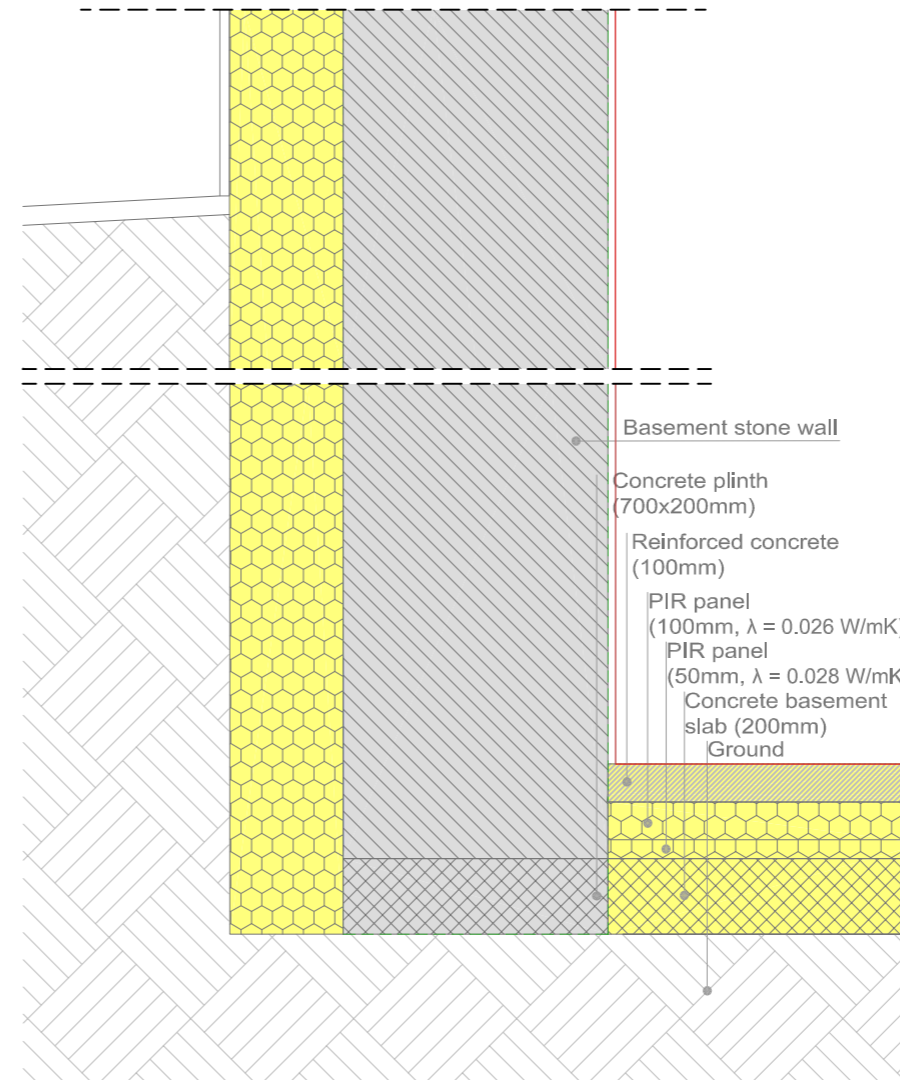
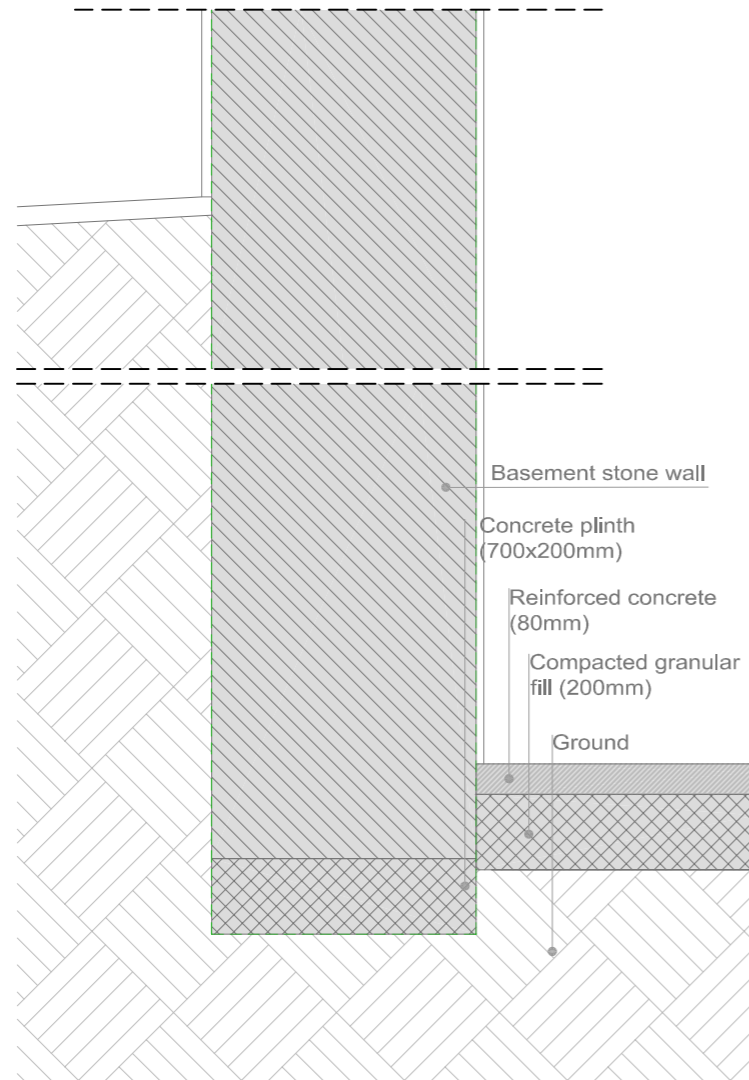
Author ZEPHIR

Date 29.03.2016

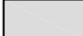







EXISTING

1 STEP



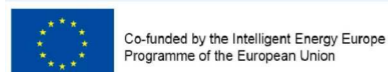
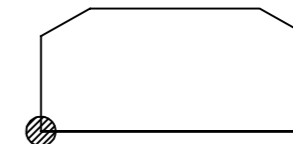
COLOR CODE

-  Existing building
-  Step 1
-  Step 2
-  Step 3
-  Step 4
-  remaining building structure

Airtight layer

DESCRIPTION/CHALLENGES

The entire basement slab in contact with the ground was replaced and insulated with PIR panels. The stone wall was insulated with XPS panels. On the connection point a significant interruption of the insulation layer is caused by the existing structural stone wall. The addition of a thermal break element was hard to implement and not reasonable from an economical point of view. The absence of mold and condensation formation has been verified.



The sole responsibility for the content of this publication lies with the authors. It does not necessarily reflect the opinion of the European Union. Neither the EACI nor the European Commission are responsible for any use that may be made of the information contained therein.



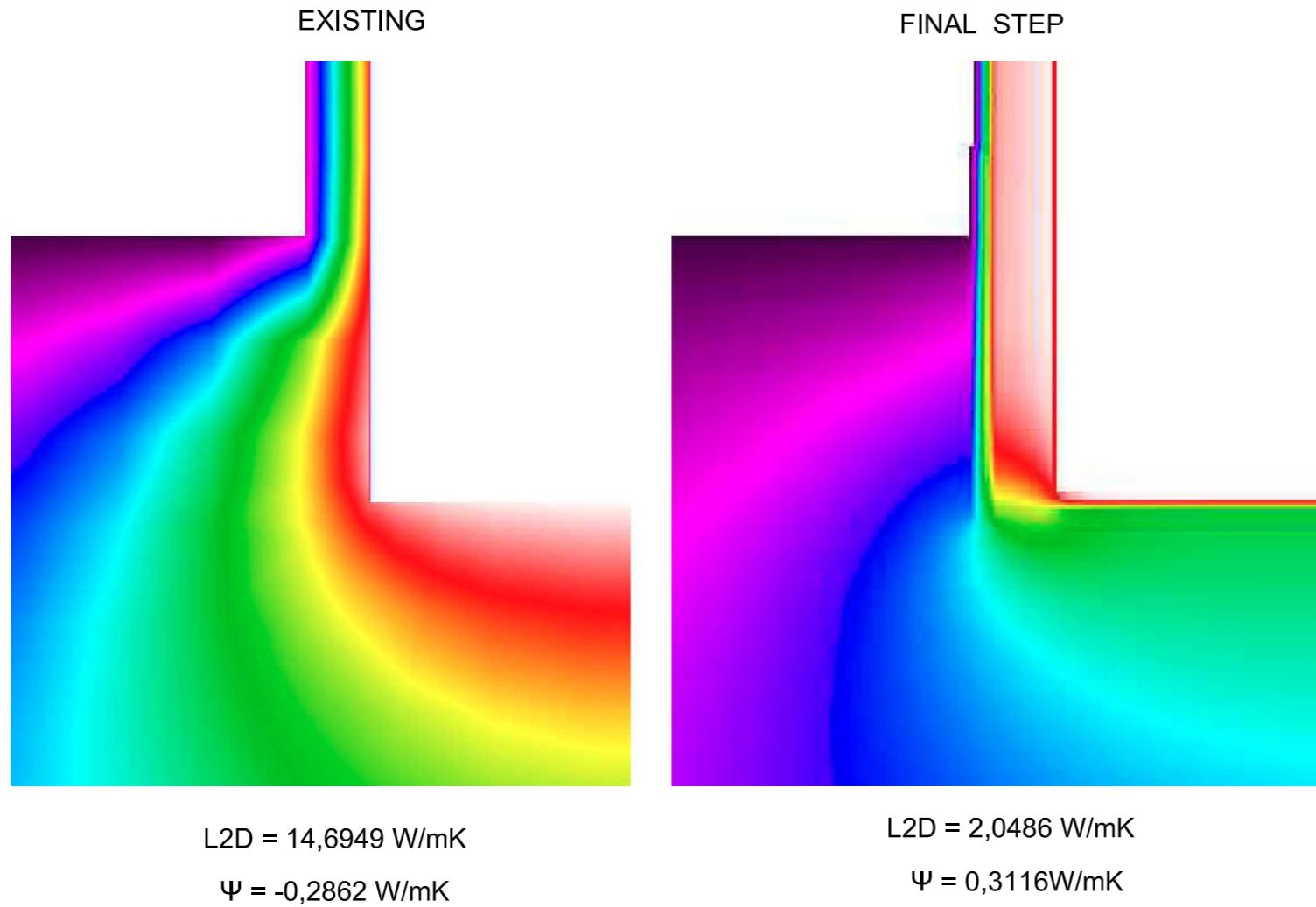
EuroPHit_OP24_ZEPHIR_La Provvidenza_Italy

FSEW01 Basement stone wall - floor slab connection

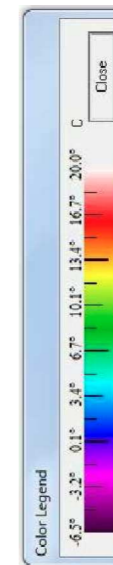
Scale 1:20 @ A4

Author ZEPHIR

Date 29.03.2016

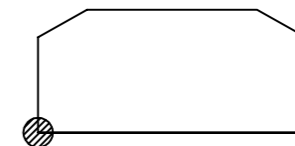


COLOR CODE



DESCRIPTION/CHALLENGES

The entire basement slab in contact with the ground was replaced and insulated with PIR panels. The stone wall was insulated with XPS panels. On the connection point a significant interruption of the insulation layer is caused by the existing structural stone wall. The addition of a thermal break element was hard to implement and not reasonable from an economical point of view. The absence of mold and condensation formation has been verified.




Co-funded by the Intelligent Energy Europe Programme of the European Union

The sole responsibility for the content of this publication lies with the authors. It does not necessarily reflect the opinion of the European Union. Neither the EACI nor the European Commission are responsible for any use that may be made of the information contained therein.

EuroPHit

EuroPHit_OP24_ZEPHIR_La Provvidenza_Italy

FSEW01 | Basement stone wall - floor slab connection

Scale	-	
Author	ZEPHIR	
Date	29.03.2016	

BEFORE



AFTER



DESCRIPTION/CHALLENGES

The entire basement slab in contact with the ground was replaced and insulated with PIR panels. The stone wall was insulated with XPS panels. On the connection point a significant interruption of the insulation layer is caused by the existing structural stone wall. The addition of a thermal break element was hard to implement and not reasonable from an economical point of view. The absence of mold and condensation formation has been verified.

