

EuroPHit_OP24_ZEPHIR_La Provvidenza_Italy

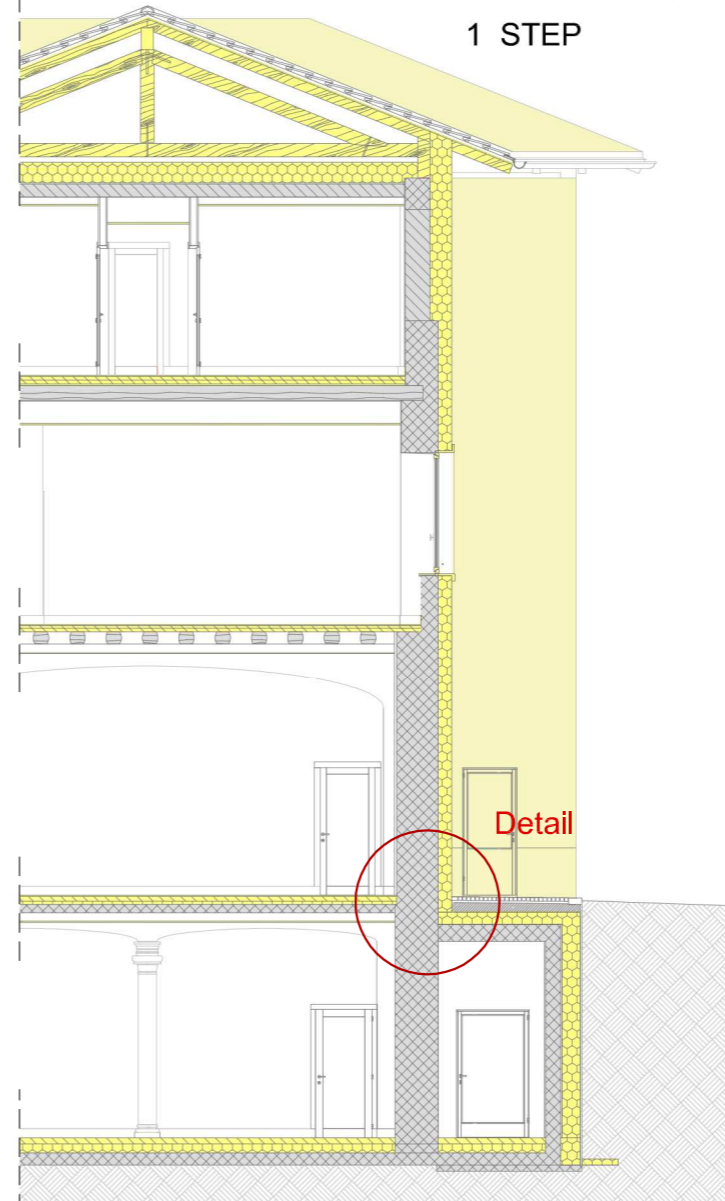
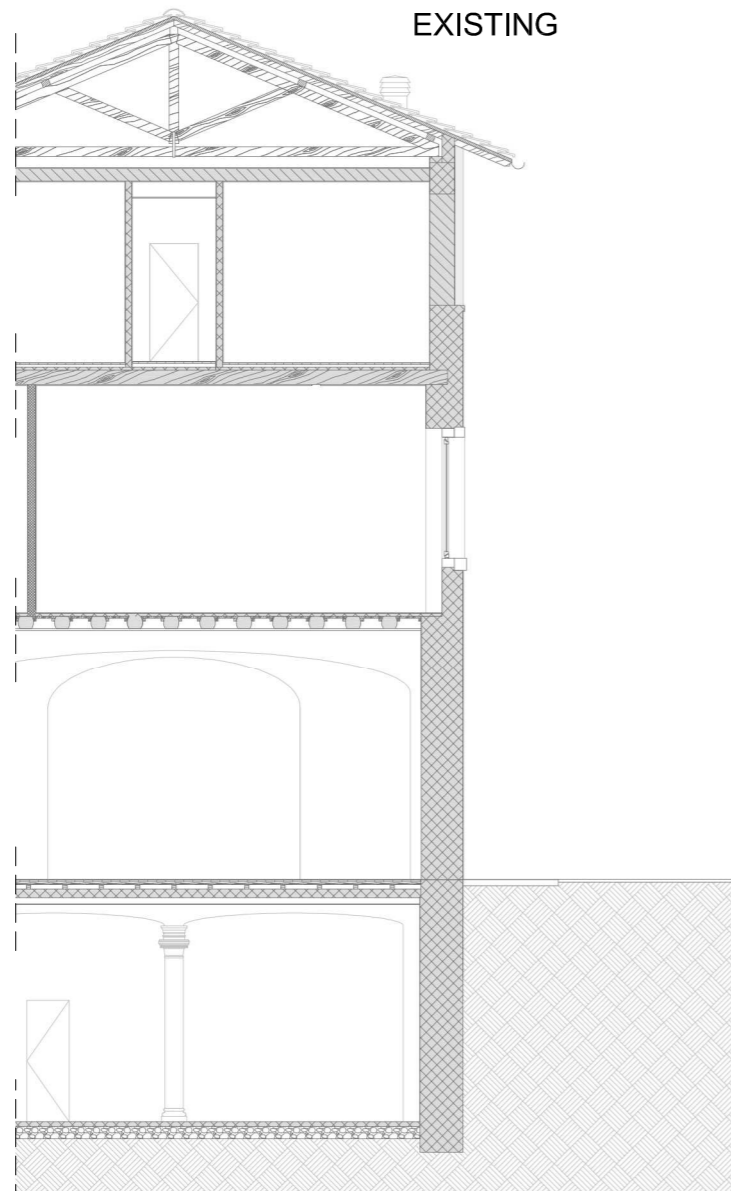
Scale 1:50 @ A4

Author ZEPHIR

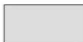



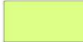
Date 29.03.2016



EWHB External stone wall - Basement ceiling connection



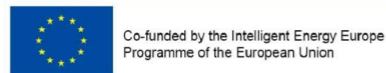
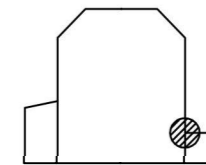
COLOR CODE

-  Existing building
-  Step 1
-  Step 2
-  Step 3
-  Step 4

Airtight layer

DESCRIPTION/CHALLENGES

The external insulation guarantees a continuous thermal envelope. All the opaque elements, vertical and horizontal, are covered by insulation panels and therefore all the thermal bridges are solved. The existing stone wall has been insulated with EPS panels and the new basement ceiling with PUR panels.



The sole responsibility for the content of this publication lies with the authors. It does not necessarily reflect the opinion of the European Union. Neither the EACI nor the European Commission are responsible for any use that may be made of the information contained therein.



EuroPHit_OP24_ZEPHIR_La Provvidenza_Italy

EWHB External stone wall - Basement ceiling connection

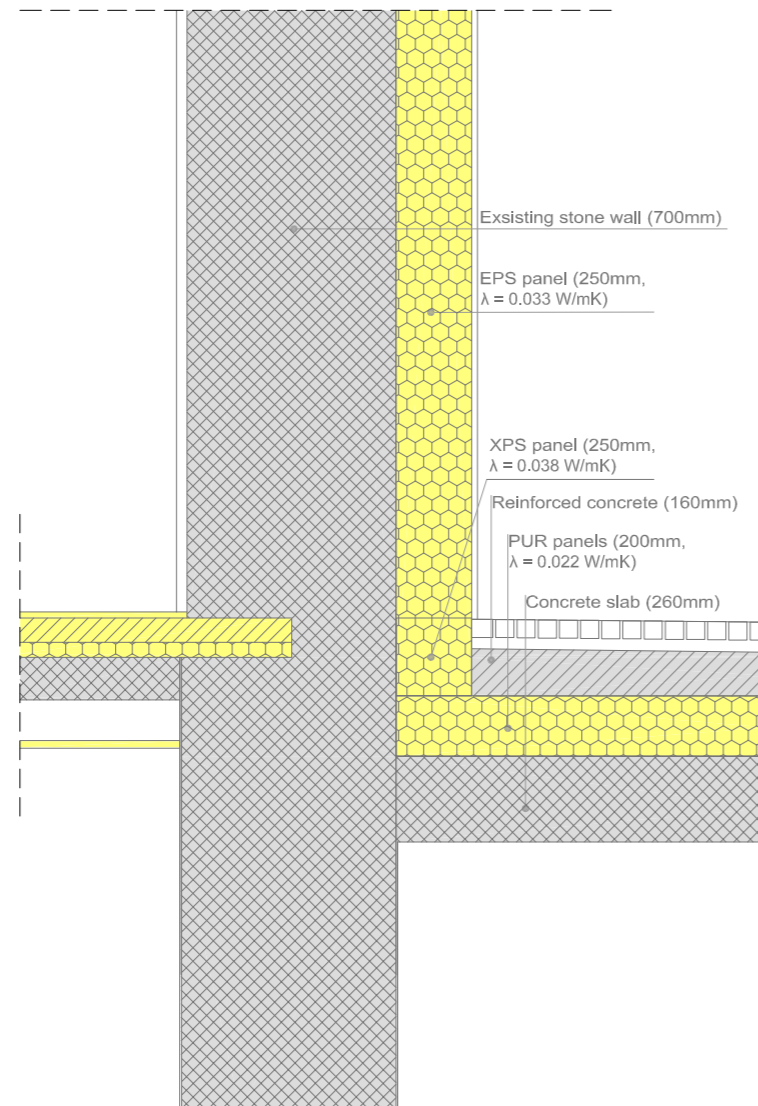
Scale 1:10 @ A4

Author ZEPHIR

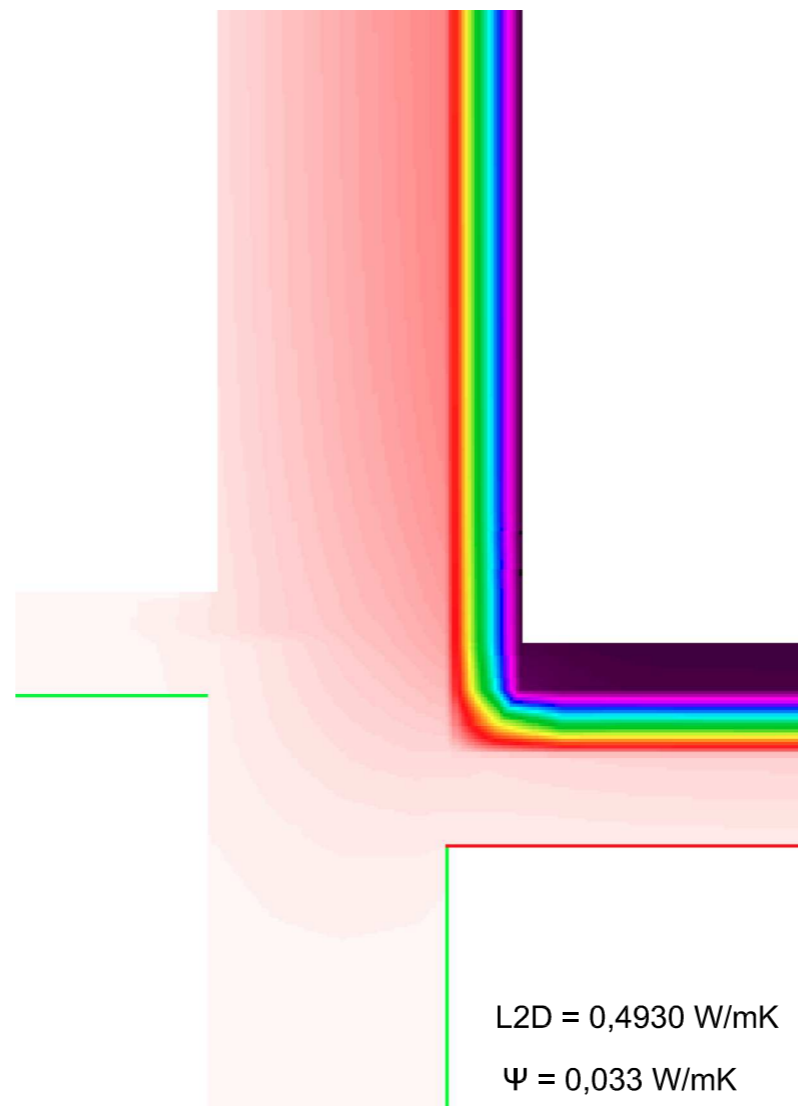
Date 29.03.2016



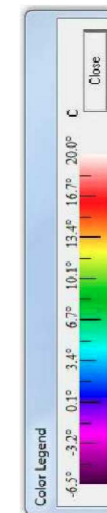
Detail



Thermal analysis

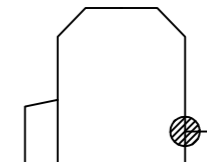


COLOR CODE



DESCRIPTION/CHALLENGES

The external insulation guarantees a continuous thermal envelope. All the opaque elements, vertical and horizontal, are covered by insulation panels and therefore all the thermal bridges are solved. The existing stone wall has been insulated with EPS panels and the new basement ceiling with PUR panels.



Co-funded by the Intelligent Energy Europe Programme of the European Union

The sole responsibility for the content of this publication lies with the authors. It does not necessarily reflect the opinion of the European Union. Neither the EACI nor the European Commission are responsible for any use that may be made of the information contained therein.

EuroPHit

EuroPHit_OP24_ZEPHIR_La Provvidenza_Italy

EWHB External stone wall - Basement ceiling connection

Scale -

Author ZEPHIR

Date 29.03.2016



BEFORE

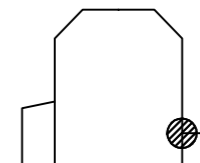


AFTER



DESCRIPTION/CHALLENGES

The external insulation guarantees a continuous thermal envelope. All the opaque elements, vertical and horizontal, are covered by insulation panels and therefore all the thermal bridges are solved. The existing stone wall has been insulated with EPS panels and the new basement ceiling with PUR panels.



Co-funded by the Intelligent Energy Europe Programme of the European Union

The sole responsibility for the content of this publication lies with the authors. It does not necessarily reflect the opinion of the European Union. Neither the EACI nor the European Commission are responsible for any use that may be made of the information contained therein.

EuroPHit