

EuroPHit_OP24_ZEPHIR_La Provvidenza_Italy

Scale 1:10 @ A4

Author ZEPHIR

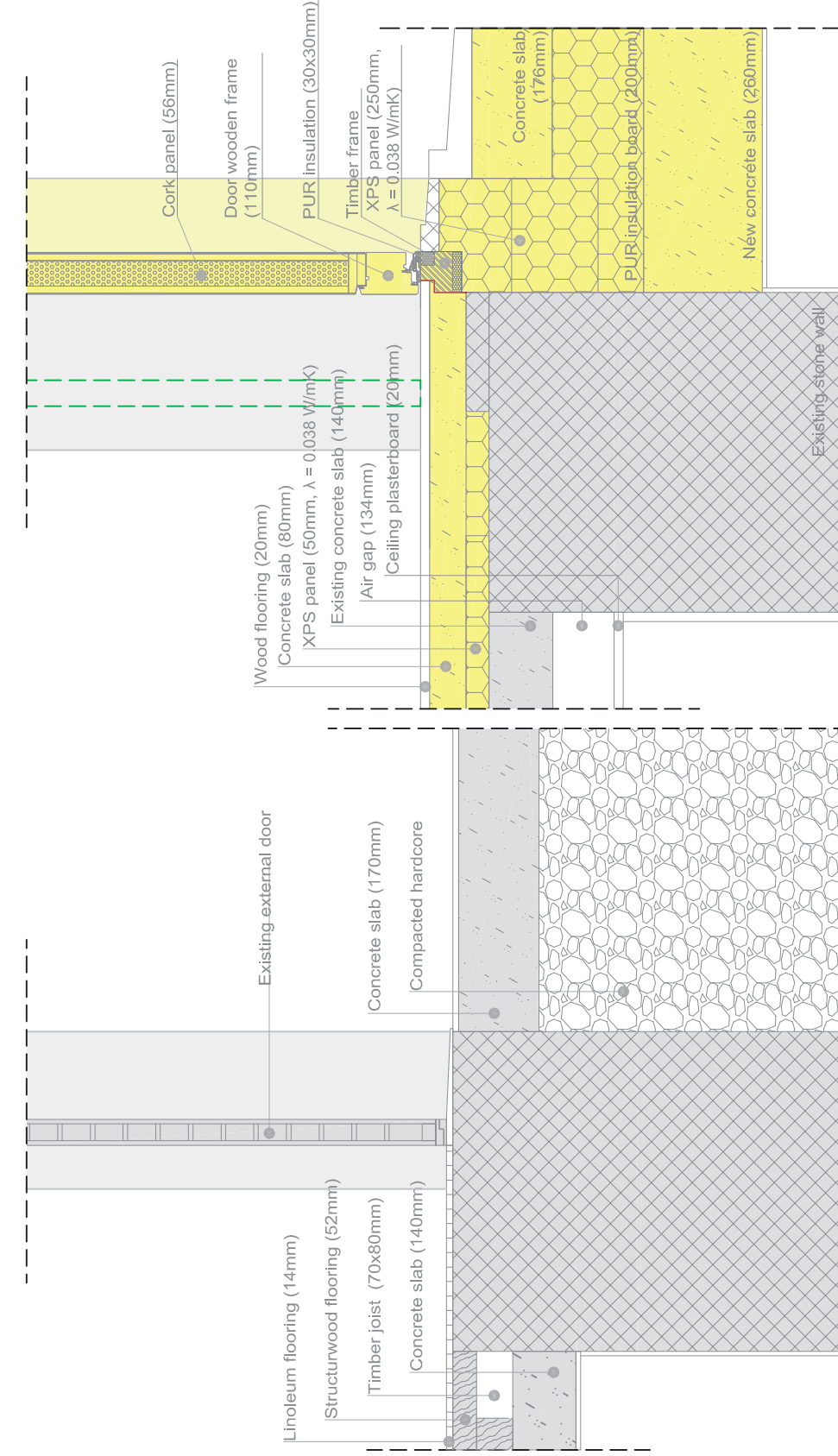
Date 23.02.2016



EDTH Door threshold

EXISTING

1 STEP



COLOR CODE



Existing building



Step 1



Step 2



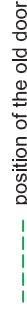
Step 3



Step 4



temporary works
(in between steps)

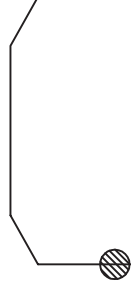


position of the old door

Airtight layer

DESCRIPTION/CHALLENGES

The window is installed in the thermal insulation layer, in this way the continuum line of thermal insulation is guaranteed on the entire vertical section.



EuroPHit_OP24_ZEPHIR_La Provvidenza_Italy

EDTH Door threshold - Mold Simulator

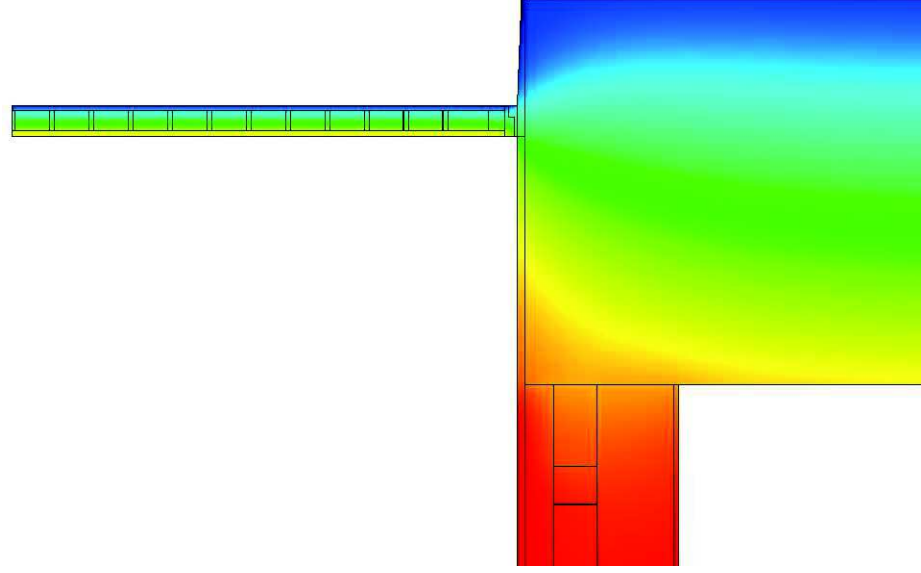
Scale 1:10 @ A4

Author ZEPHIR

Date 23.02.2016



EXISTING



L2D = 3,089 W/mK

$\psi_{inst} = 0,500 \text{ W/mK}$

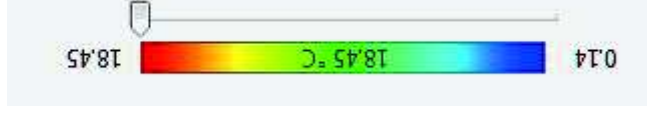
FINAL STEP



L2D = 1,431 W/mK

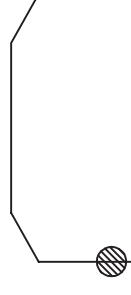
$\psi_{inst} = 0,115 \text{ W/mK}$

COLOR CODE



DESCRIPTION/CHALLENGES

The window is installed in the thermal insulation layer, in this way the continuum line of thermal insulation is guaranteed on the entire vertical section.



Co-funded by the Intelligent Energy Europe Programme of the European Union

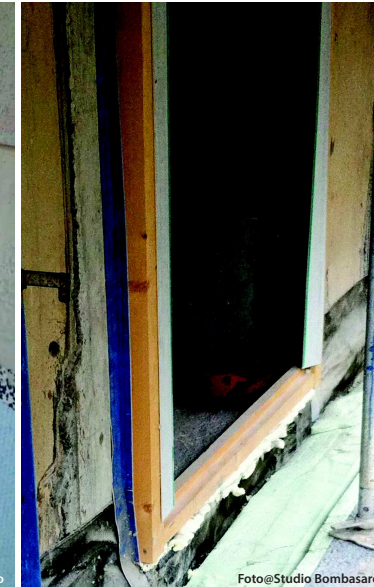
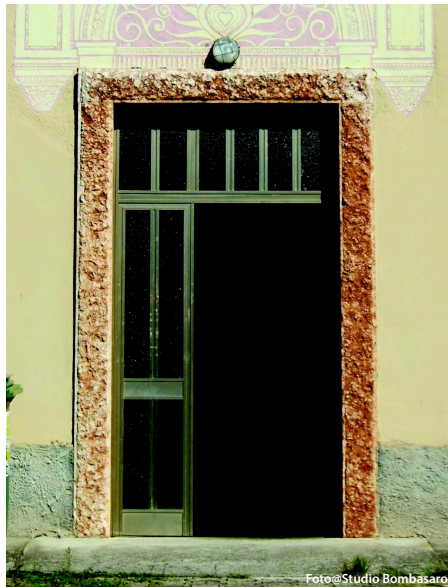
The sole responsibility for the content of this publication lies with the authors. It does not necessarily reflect the opinion of the European Union. Neither the EACI nor the European Commission are responsible for any use that may be made of the information contained therein.

EuroPHit

BEFORE



AFTER



DESCRIPTION/CHALLENGES

The window is installed in the thermal insulation layer, in this way the continuum line of thermal insulation is guaranteed on the entire vertical section.

