
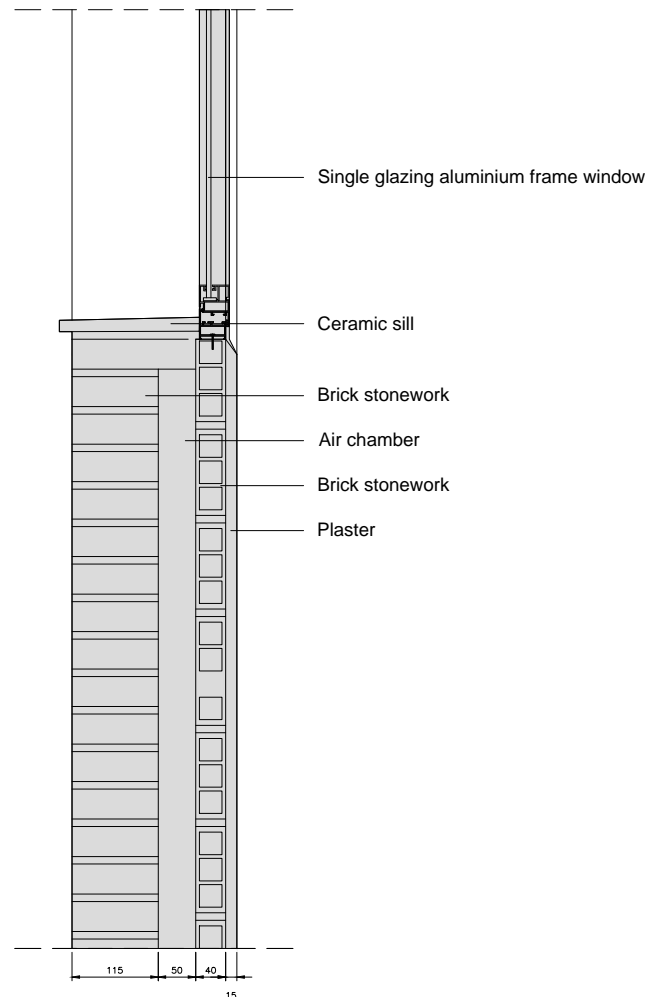


Case Study_OP23_Treviana Social Housing_Spain





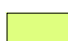

| | | |
|--------|----------------------|--|
| Scale | 1:10 @ A4 |  |
| Author | Nuria Díaz/Anne Vogt | |
| Date | 07.07.2015 | |

WIBO | Window bottom. Vertical section.

EXISTING




COLOR CODE

-  Existing building
-  Step 1
-  Step 2
-  Step 3
-  Step 4
-  temporary works (in between steps)

Airtight layer

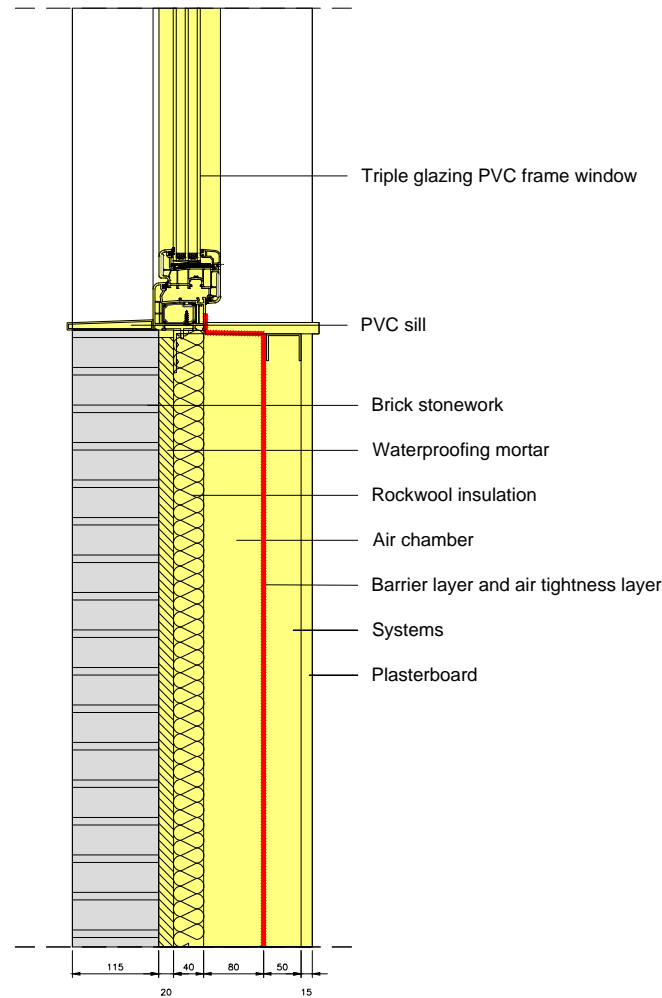
DESCRIPTION/CHALLENGES

Case Study_OP23_Treviana Social Housing_Spain







| | | |
|--------|----------------------|--|
| Scale | 1:10 @ A4 |  |
| Author | Nuria Díaz/Anne Vogt | |
| Date | 07.07.2015 | |

WIBO | Window bottom. Vertical section.

1 STEP




COLOR CODE

-  Existing building
-  Step 1
-  Step 2
-  Step 3
-  Step 4
-  temporary works (in between steps)

Airtight layer

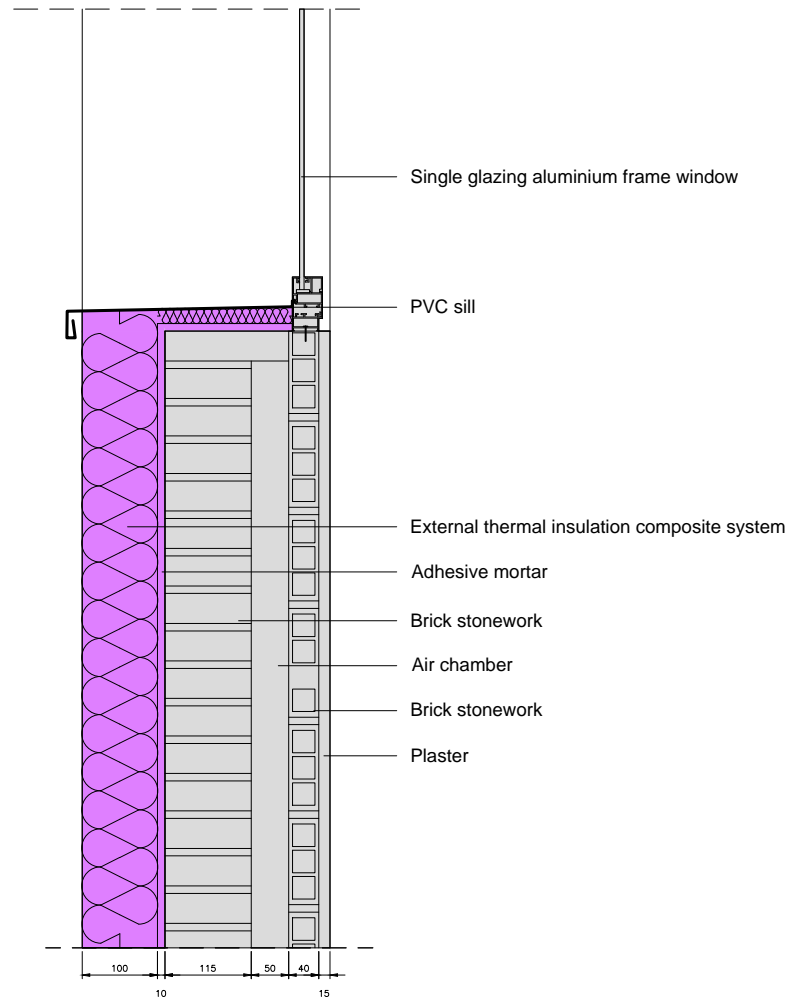
DESCRIPTION/CHALLENGES

Case Study_OP23_Treviana Social Housing_Spain

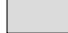





| | | |
|--------|----------------------|--|
| Scale | 1:10 @ A4 |  |
| Author | Nuria Díaz/Anne Vogt | |
| Date | 07.07.2015 | |

WIBO | Window bottom. Vertical section.

2 STEP (a)



COLOR CODE


-  Existing building
-  Step 1
-  Step 2
-  Step 3
-  Step 4
-  temporary works (in between steps)

Airtight layer

DESCRIPTION/CHALLENGES

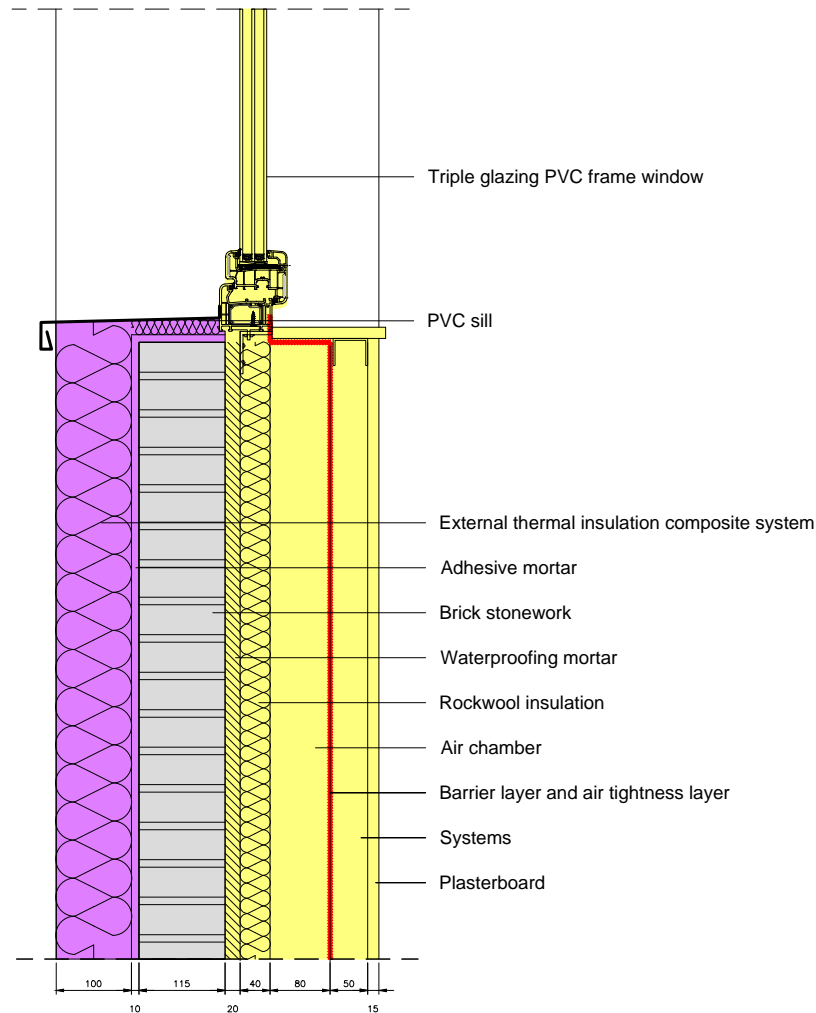
Problem with the sill insulation. Condensation produced in the window must be evacuated.

Case Study_OP23_Treviana Social Housing_Spain







| | | |
|--------|----------------------|--|
| Scale | 1:10 @ A4 |  |
| Author | Nuria Díaz/Anne Vogt | |
| Date | 07.07.2015 | |

WIBO | Window bottom. Vertical section.

2 STEP (b)



COLOR CODE

-  Existing building
-  Step 1
-  Step 2
-  Step 3
-  Step 4
-  temporary works (in between steps)

Airtight layer

DESCRIPTION/CHALLENGES

Problem with the sill insulation. Condensation produced in the window must be evacuated.

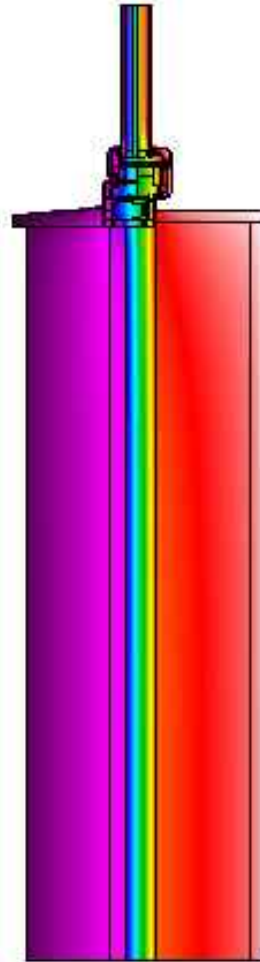
Case Study_OP23_Treviana Social Housing_Spain

Scale 1:10 @ A4
Author Nuria Díaz/Anne Vogt
Date 07.07.2015



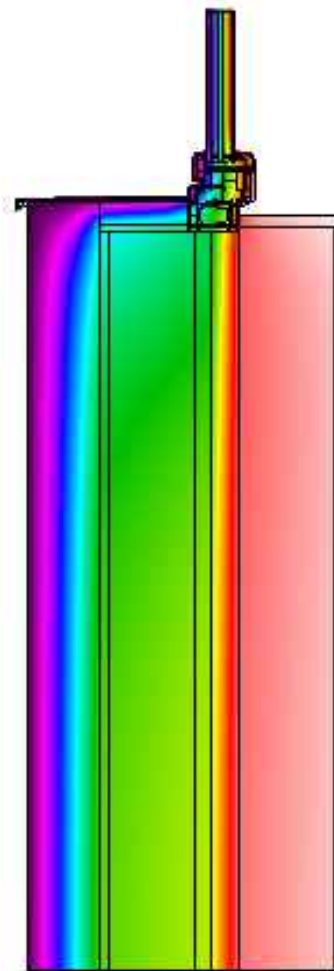
WIBO Window bottom. Vertical section.

Step 1



Ψ - value [W/mK] = 0.096

Step 2 (b)



Ψ - value [W/mK] = 0.064

COLOR CODE



DESCRIPTION/CHALLENGES