

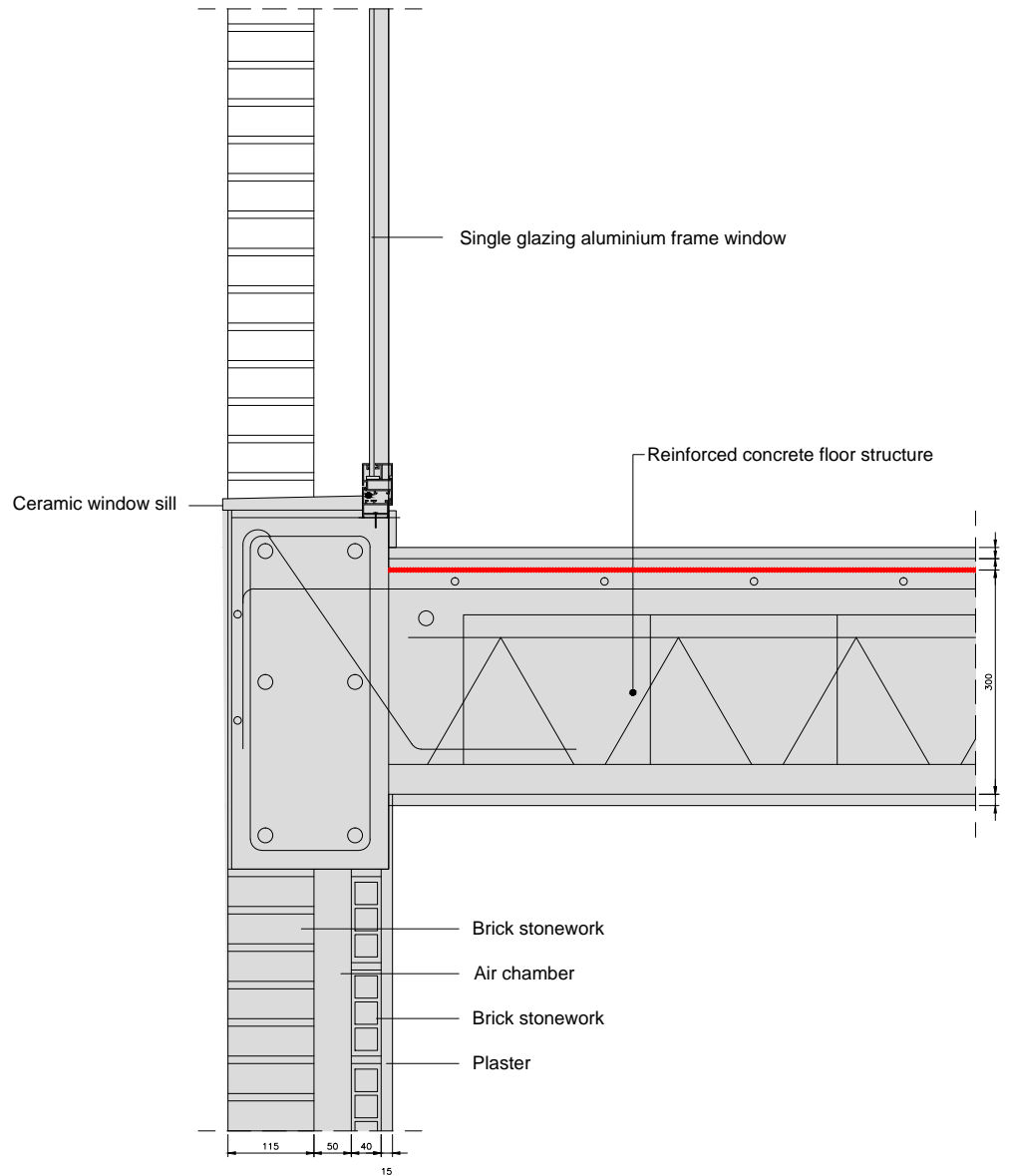
Case Study_OP23_Treviana Social Housing_Spain

Scale 1:10 @ A4
 Author Nuria Díaz/Anne Vogt
 Date 07.07.2015



WIBO Window bottom. Vertical section.

EXISTING




COLOR CODE

- Existing building
- Step 1
- Step 2
- Step 3
- Step 4
- temporary works (in between steps)

Airtight layer

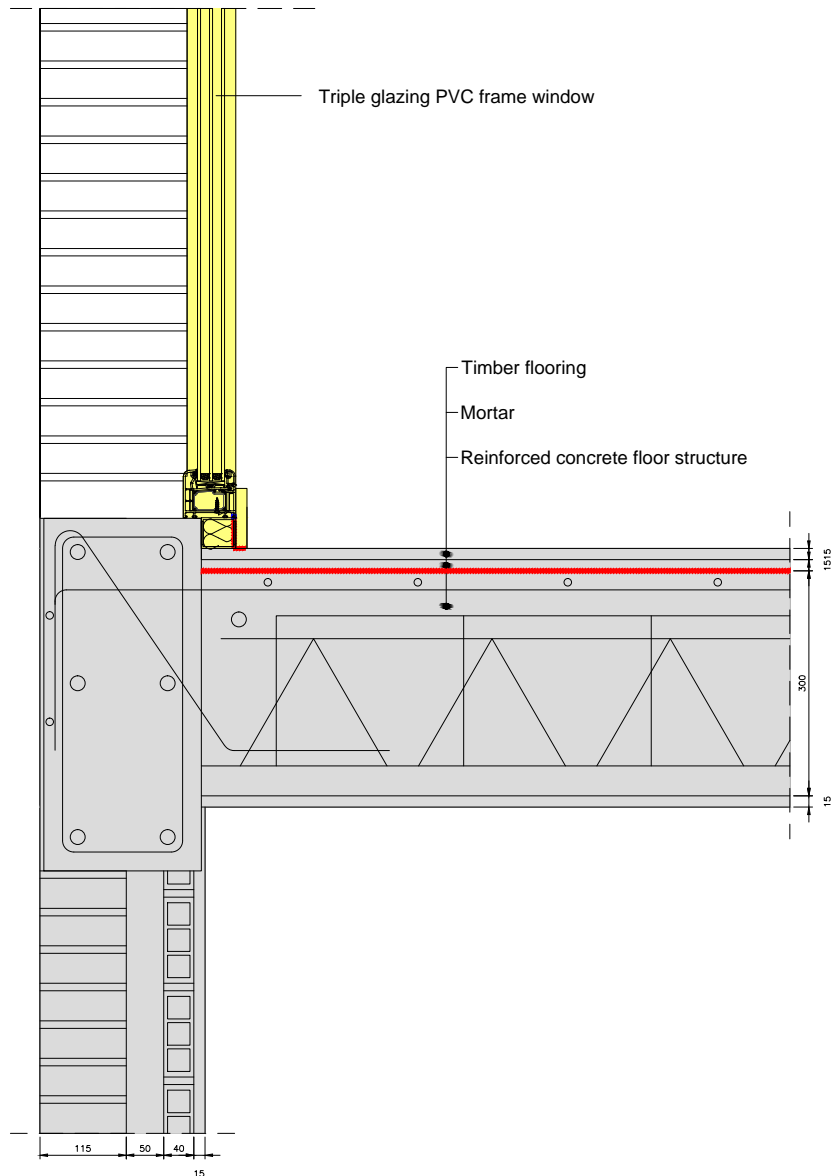
DESCRIPTION/CHALLENGES

Case Study_OP23_Treviana Social Housing_Spain





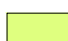

Scale	1:10 @ A4	
Author	Nuria Díaz/Anne Vogt	
Date	07.07.2015	

WIBO | Window bottom. Vertical section.

1 STEP




COLOR CODE

-  Existing building
-  Step 1
-  Step 2
-  Step 3
-  Step 4
-  temporary works (in between steps)

Airtight layer

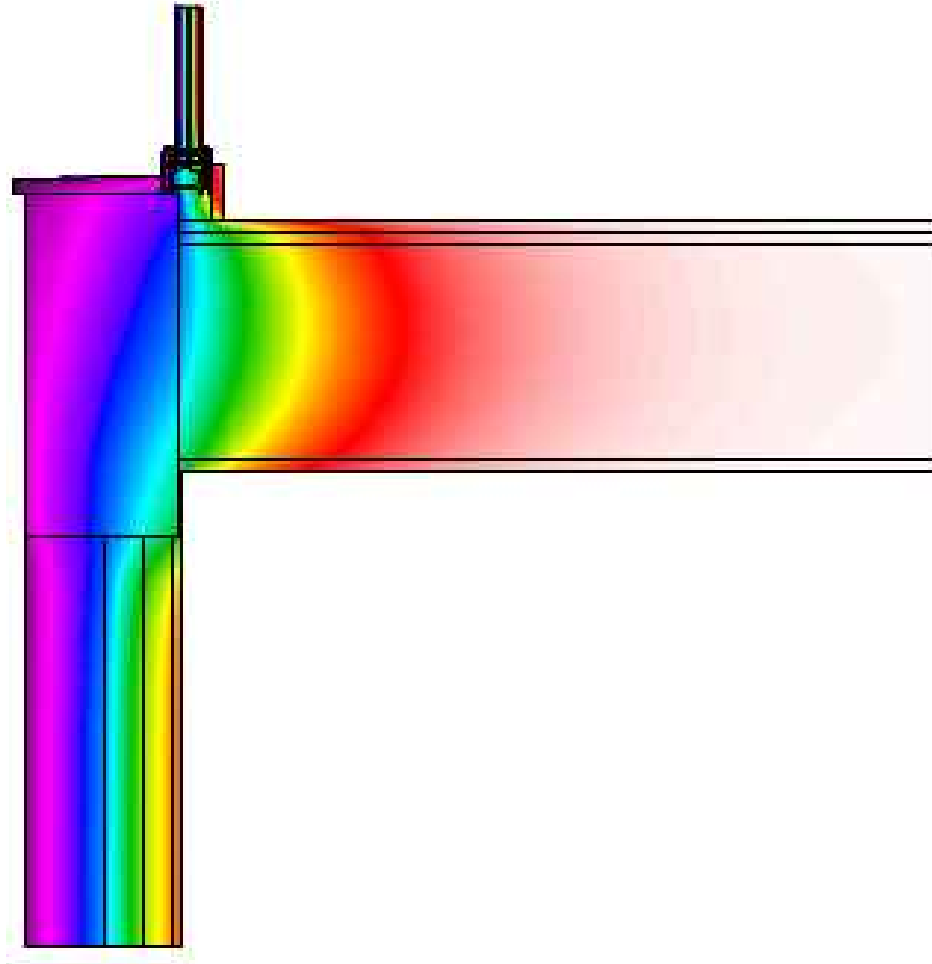
DESCRIPTION/CHALLENGES

Case Study_OP23_Treviana Social Housing_Spain

Scale	1:10 @ A4	
Author	Nuria Díaz/Anne Vogt	
Date	07.07.2015	

WIBO | Window bottom. Vertical section. - THERM

Step 1



COLOR CODE



DESCRIPTION/CHALLENGES

Ψ - value [W/mK] = 1.709

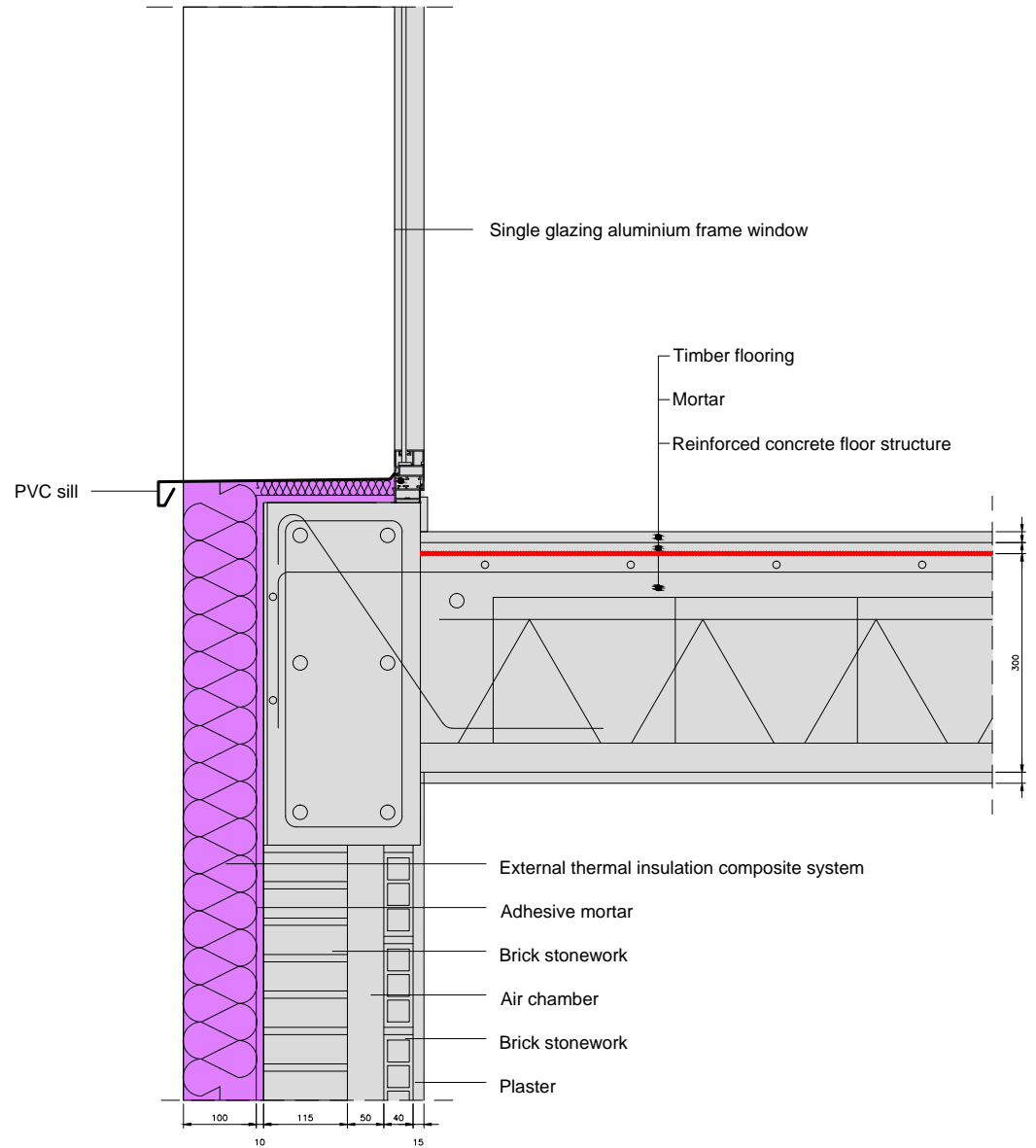
Case Study_OP23_Treviana Social Housing_Spain

Scale	1:10 @ A4
Author	Nuria Díaz/Anne Vogt
Date	07.07.2015



WIBO | Window bottom. Vertical section.

2 STEP (a)



COLOR CODE


- Existing building
- Step 1
- Step 2
- Step 3
- Step 4
- temporary works (in between steps)

Airtight layer

DESCRIPTION/CHALLENGES

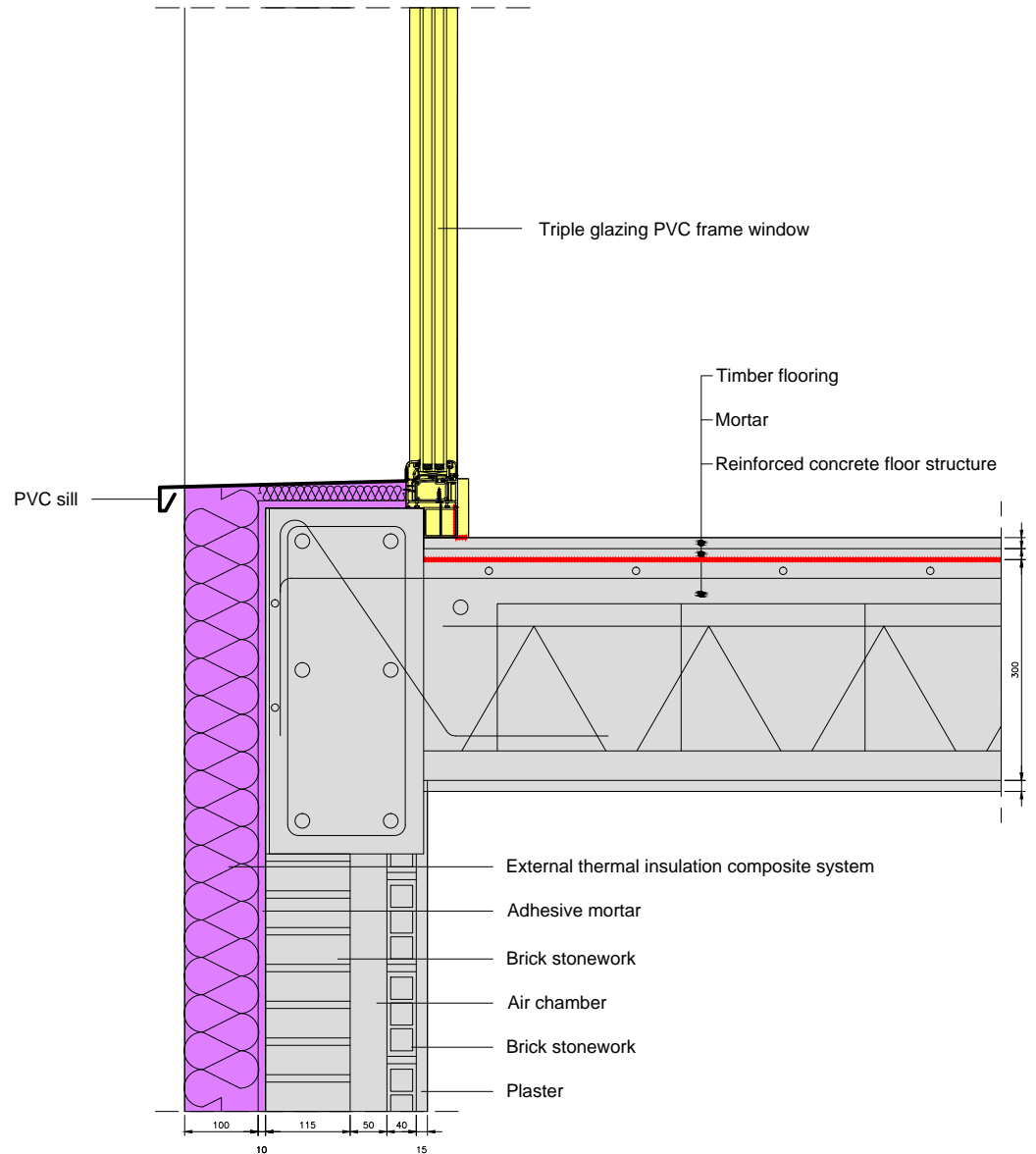
Problem with the sill insulation. The condensation produced in the window must be evacuated.

Case Study_OP23_Treviana Social Housing_Spain





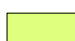

Scale	1:10 @ A4	
Author	Nuria Diaz/Anne Vogt	
Date	07.07.2015	

WIBO | Window bottom. Vertical section.

2 STEP (b)



COLOR CODE

-  Existing building
-  Step 1
-  Step 2
-  Step 3
-  Step 4
-  temporary works (in between steps)

Airtight layer

DESCRIPTION/CHALLENGES

Problem with the sill insulation.
The condensation produced in the window must be evacuated. To avoid this problem the window should be shorter.

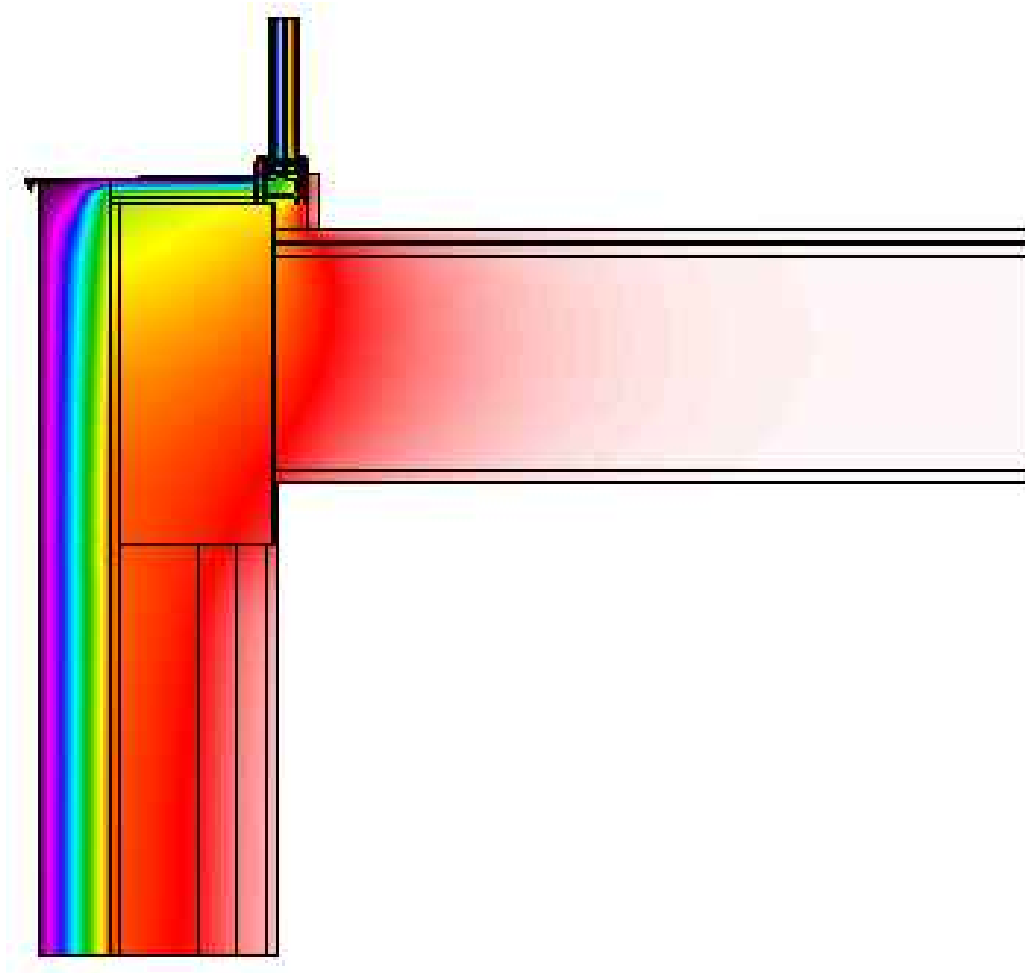
Case Study_OP23_Treviana Social Housing_Spain

Scale 1:10 @ A4
Author Nuria Díaz/Anne Vogt
Date 07.07.2015



WIBO Window bottom. Vertical section. - THERM

Step 2 (b)



COLOR CODE



DESCRIPTION/CHALLENGES

Ψ - value [W/mK] = 0.258