

Case Study_OP23_Treviana Social Housing_Spain

Scale 1:10 @ A4

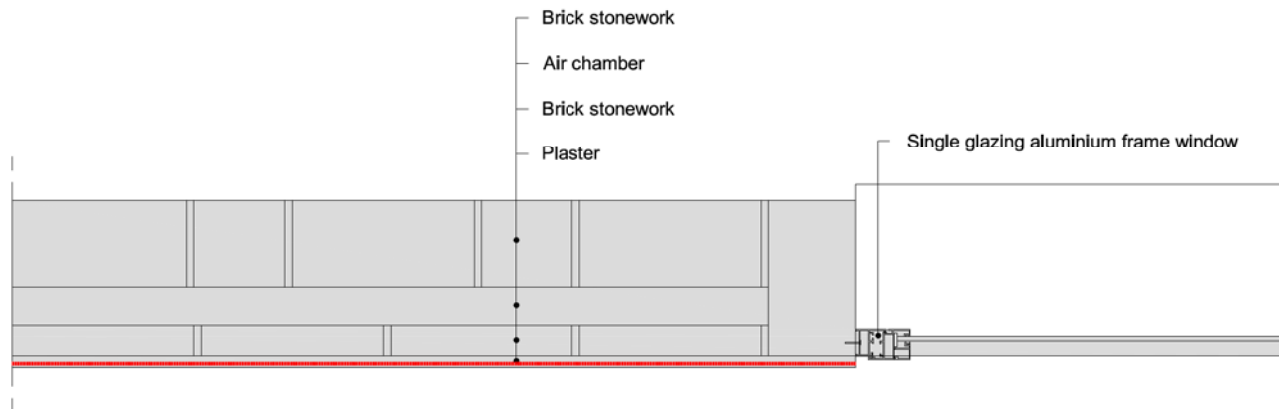
Author Nuria Díaz/Anne Vogt

Date 07.07.2015



WIRV Window reveal. Vertical section.

EXISTING



COLOR CODE


 Existing building

 Step 1

 Step 2

 Step 3

 Step 4


 temporary works
(in between steps)

Airtight layer

DESCRIPTION/CHALLENGES

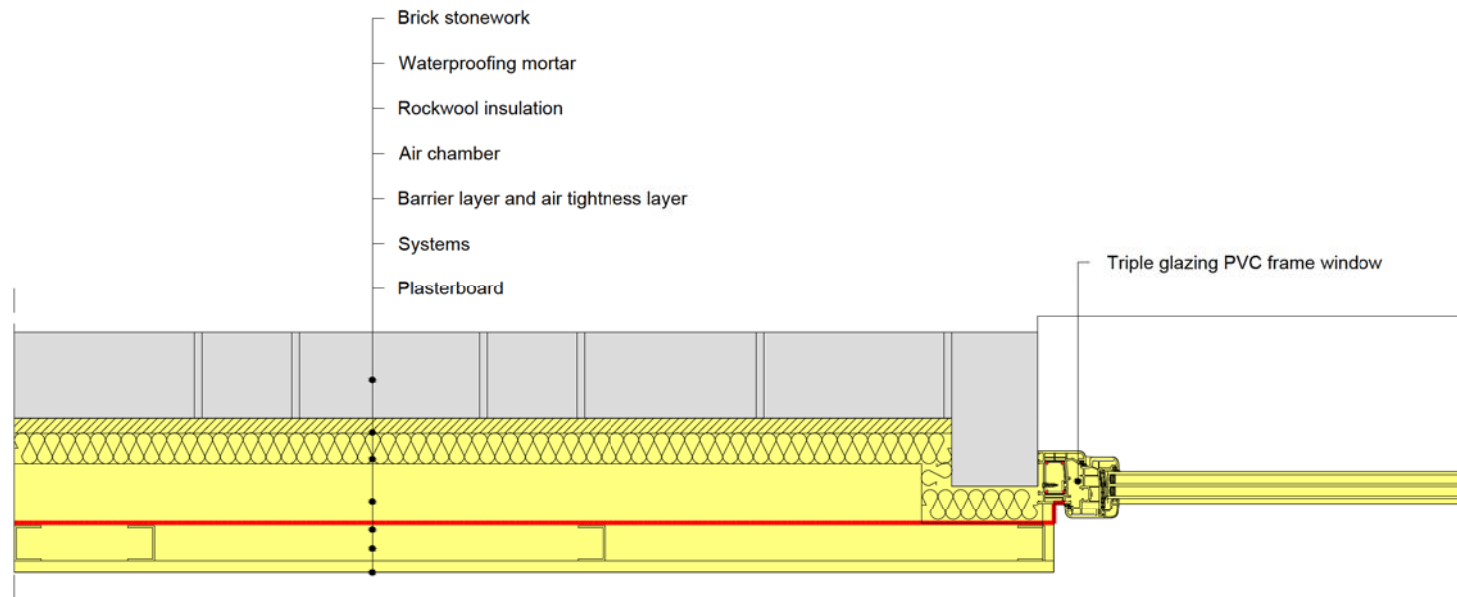
Exterior wall with no insulation and single glazing aluminium frame window.

Case Study_OP23_Treviana Social Housing_Spain

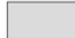





Scale	1:10 @ A4	
Author	Nuria Díaz/Anne Vogt	
Date	07.07.2015	

WIRV | Window reveal. Vertical section.

1 STEP



COLOR CODE

-  Existing building
-  Step 1
-  Step 2
-  Step 3
-  Step 4
-  temporary works (in between steps)

Airtight layer

DESCRIPTION/CHALLENGES

It is necessary to treat the brick with a plaster layer before the new window installation.

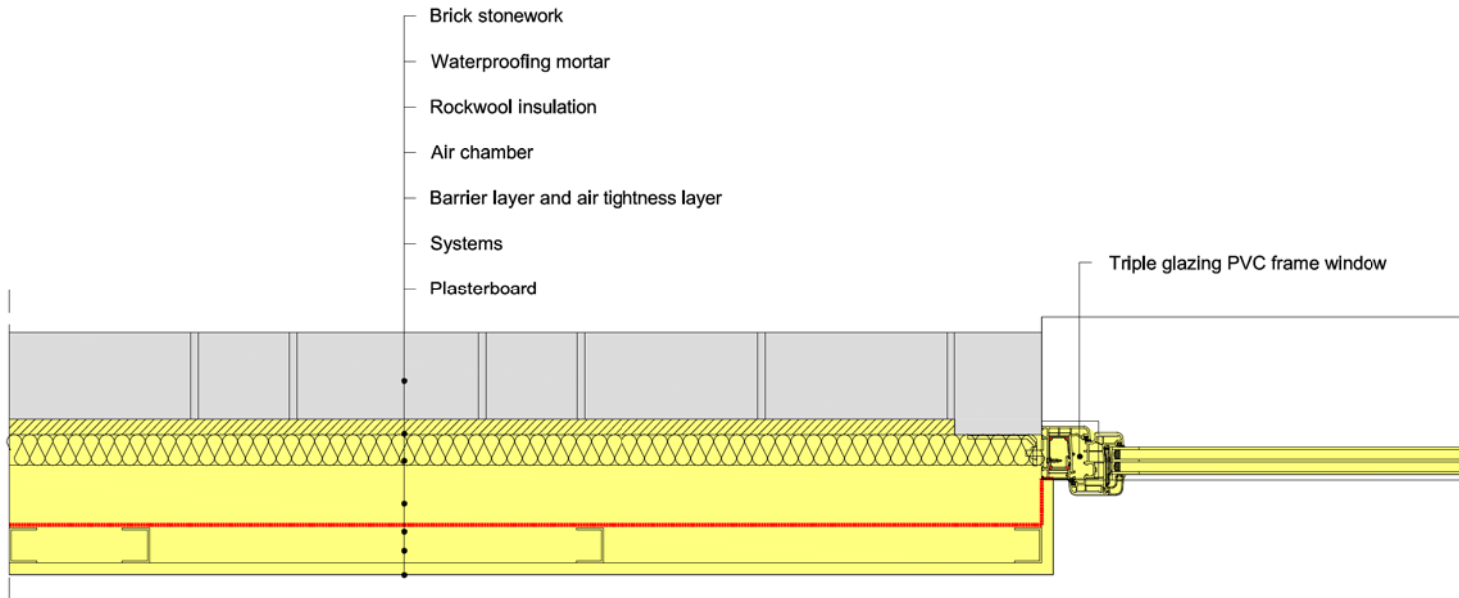
Case Study_OP23_Treviana Social Housing_Spain

Scale 1:10 @ A4
 Author Nuria Díaz/Anne Vogt
 Date 07.07.2015



WIRV Window reveal. Vertical section.

1 STEP (a)



COLOR CODE

- Existing building
- Step 1
- Step 2
- Step 3
- Step 4
- temporary works (in between steps)

Airtight layer

DESCRIPTION/CHALLENGES

This installation situation is the ideal. However, it was not possible in this particular case, so the Step 1a is the as built situation. It is necessary to treat the brick with a plaster layer before the new window installation.

Case Study_OP23_Treviana Social Housing_Spain

Scale 1:10 @ A4
Author Nuria Díaz/Anne Vogt
Date 07.07.2015



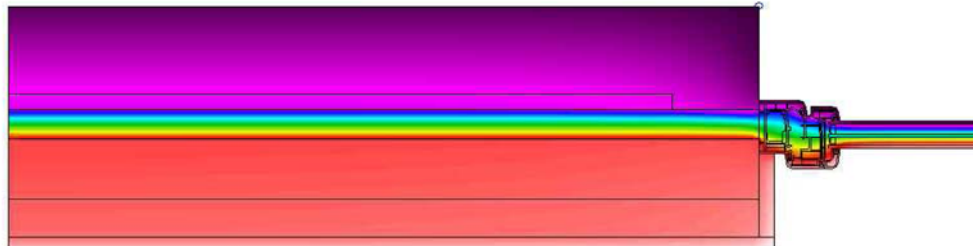
WIRV Window reveal. Vertical section. - THERM

Step 1 (a) as built



Ψ - value [W/mK] = 0.141

Step 1 (b)



Ψ - value [W/mK] = 0.085

COLOR CODE



DESCRIPTION/CHALLENGES

The optimal window position would be as the step 1 (b) shows. However, that solution was not possible in this case.

Case Study_OP23_Treviana Social Housing_Spain

Scale 1:10 @ A4

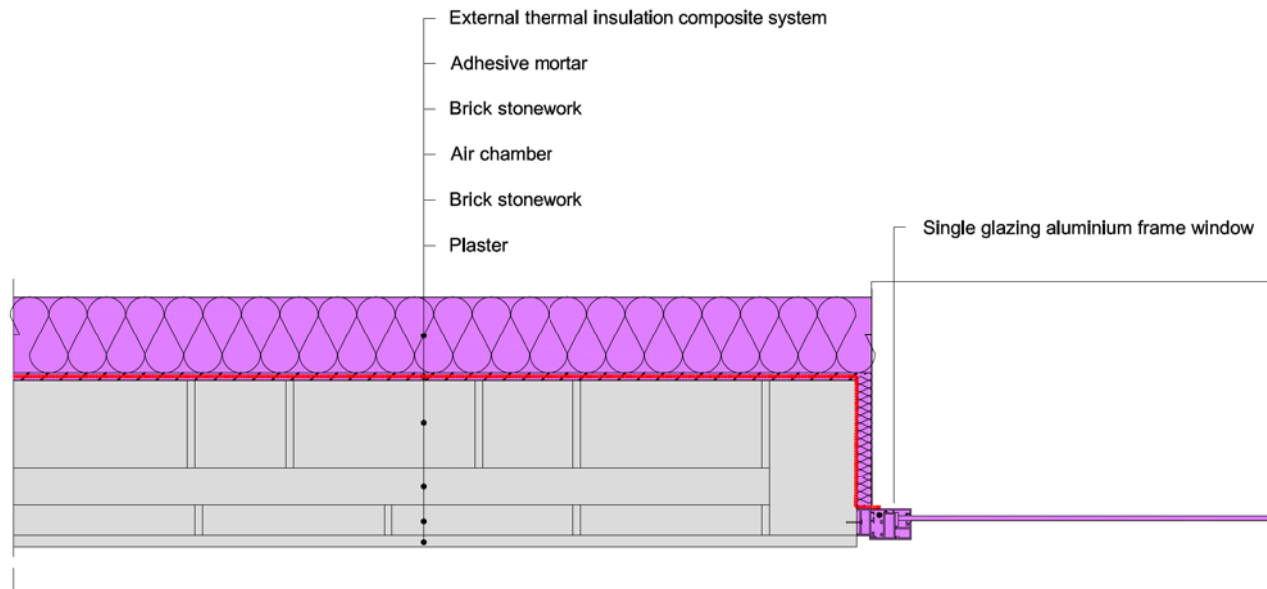
Author Nuria Díaz/Anne Vogt

Date 07.07.2015



WIRV Window reveal. Vertical section.

2 STEP (a)



COLOR CODE


 Existing building

 Step 1

 Step 2

 Step 3

 Step 4

 temporary works
(in between steps)

Airtight layer

DESCRIPTION/CHALLENGES

This detail does not include the first step measure developed in ONE apartment.

It is necessary to treat the brick with a plaster layer before the new window installation.



Co-funded by the Intelligent Energy Europe Programme of the European Union

The sole responsibility for the content of this publication lies with the authors. It does not necessarily reflect the opinion of the European Union. Neither the EACI nor the European Commission are responsible for any use that may be made of the information contained therein.

EuroPHit

Case Study_OP23_Treviana Social Housing_Spain

Scale 1:10 @ A4

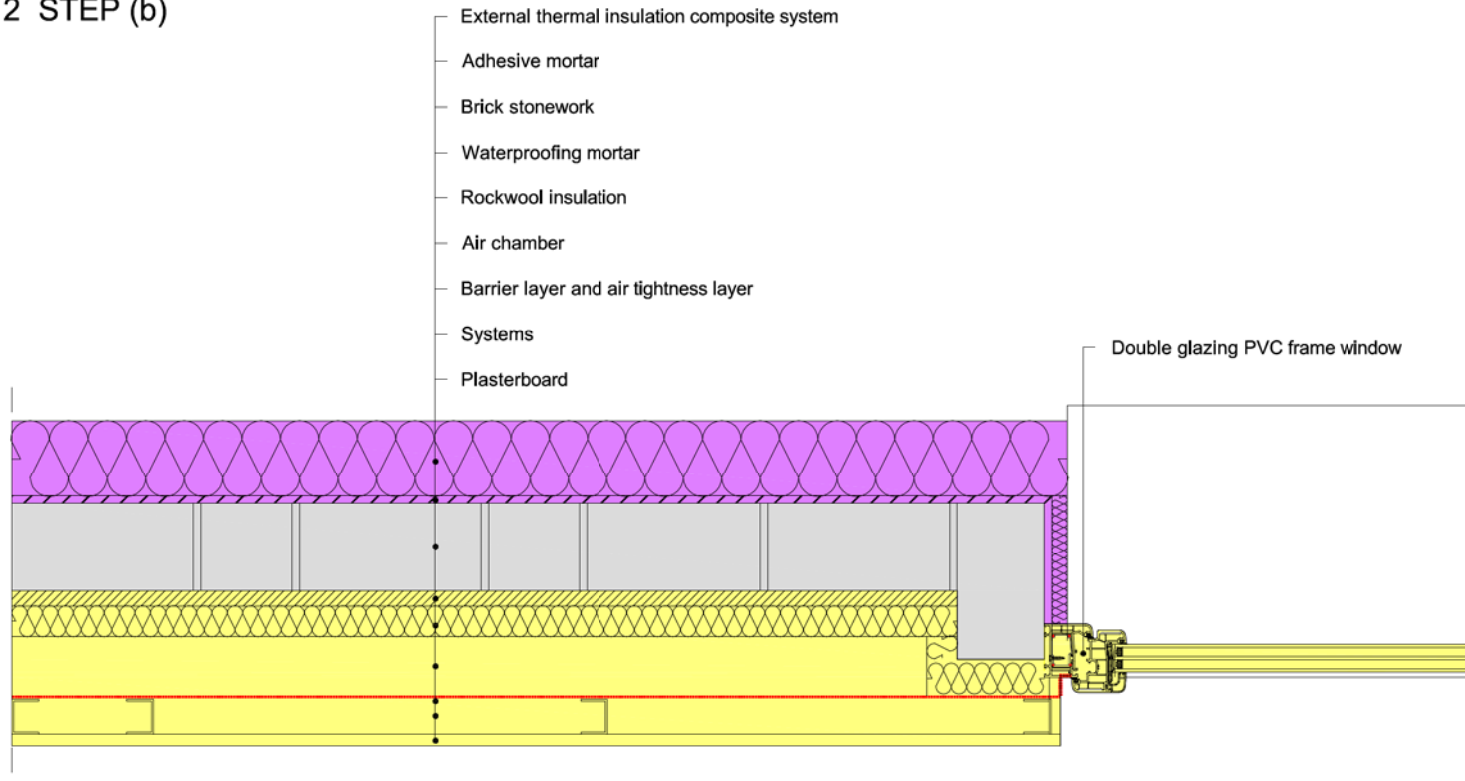
Author Nuria Díaz/Anne Vogt

Date 07.07.2015



WIRV Window reveal. Vertical section.

2 STEP (b)



COLOR CODE

Existing building

Step 1

Step 2

Step 3

Step 4

temporary works
(in between steps)

Airtight layer

DESCRIPTION/CHALLENGES

This detail include the first step measure developed in ONE apartment.

It is necessary to treat the brick with a plaster layer before the new window installation.



Co-funded by the Intelligent Energy Europe Programme of the European Union

The sole responsibility for the content of this publication lies with the authors. It does not necessarily reflect the opinion of the European Union. Neither the EACI nor the European Commission are responsible for any use that may be made of the information contained therein.

EuroPHit

Case Study_OP23_Treviana Social Housing_Spain

WIRV | Window reveal. Vertical section. - THERM

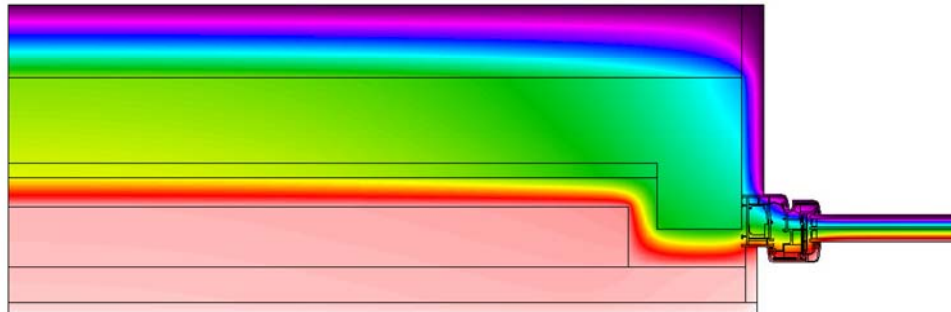
Scale 1:10 @ A4

Author Nuria Diaz/Anne Vogt

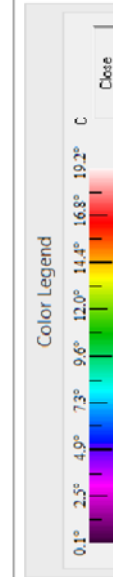
Date 07.07.2015



Step 2 (b)



COLOR CODE



DESCRIPTION/CHALLENGES

This detail include the first step measure developed in ONE apartment.

Ψ - value [W/mK] = 0.091



Co-funded by the Intelligent Energy Europe Programme of the European Union

The sole responsibility for the content of this publication lies with the authors. It does not necessarily reflect the opinion of the European Union. Neither the EACI nor the European Commission are responsible for any use that may be made of the information contained therein.

EuroPHit

Case Study_OP23_Treviana Social Housing_Spain

Scale 1:10 @ A4

Author Nuria Díaz/Anne Vogt

Date 07.07.2015



WIRV Window reveal. Vertical section.

BEFORE

AFTER



DESCRIPTION/CHALLENGES