
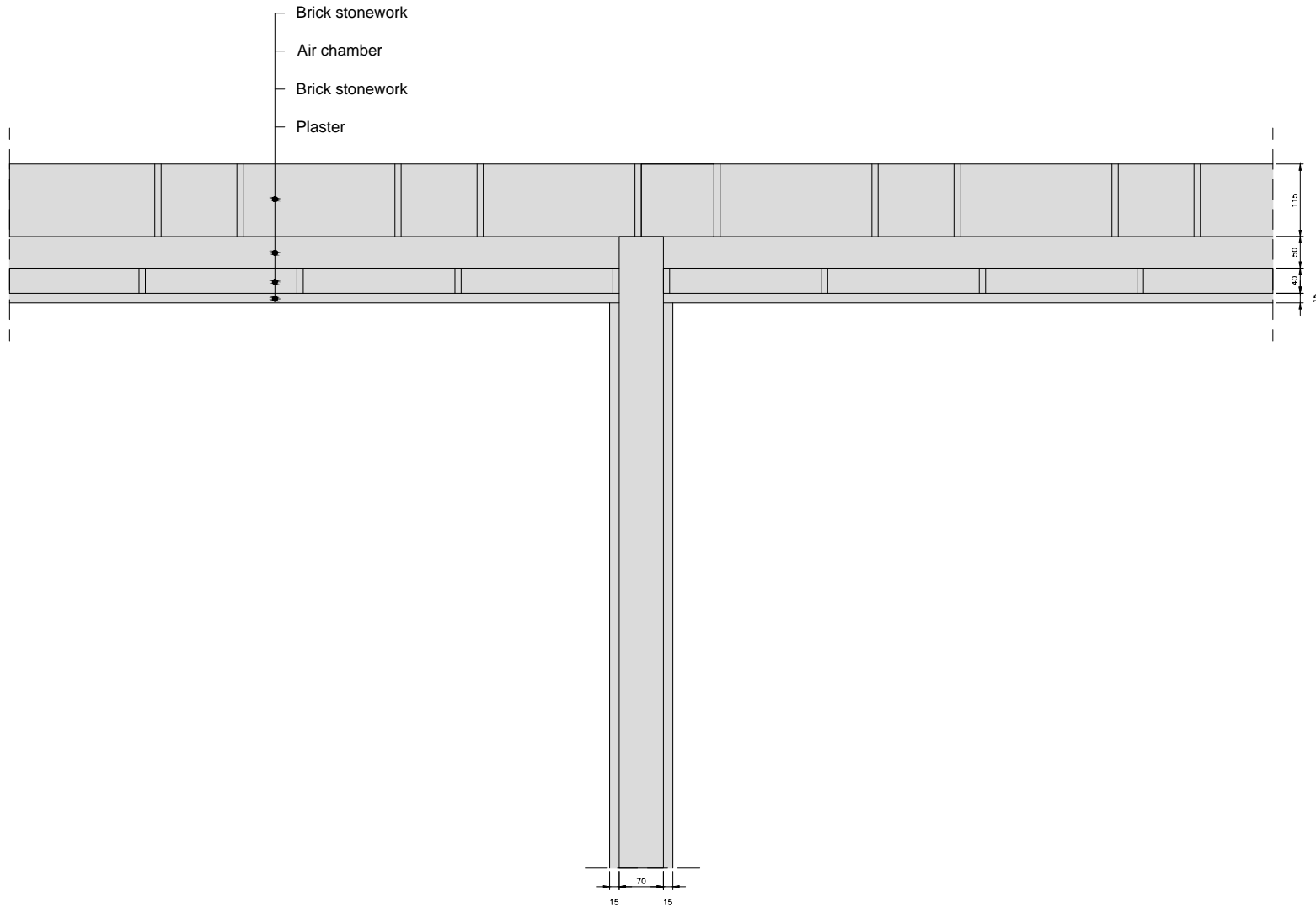


Case Study_OP23_Treviana Social Housing_Spain


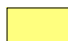


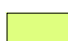

Scale	1:10 @ A4	
Author	Nuria Díaz/Anne Vogt	
Date	07.07.2015	

EWIW | Exterior wall interior wall. Horizontal section.

EXISTING




COLOR CODE

-  Existing building
-  Step 1
-  Step 2
-  Step 3
-  Step 4
-  temporary works
(in between steps)

Airtight layer

DESCRIPTION/CHALLENGES

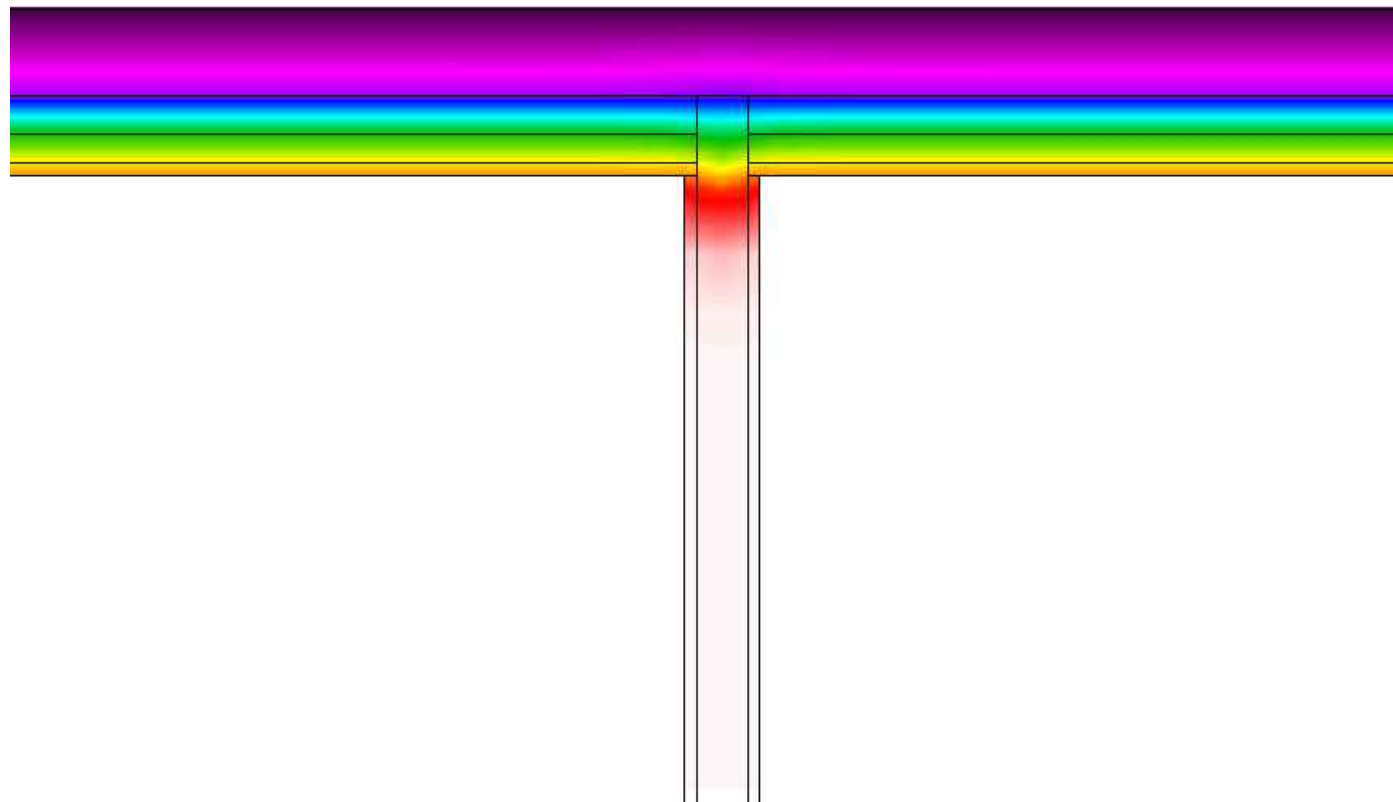
Case Study_OP23_Treviana Social Housing_Spain

Scale	1:10 @ A4	
Author	Nuria Díaz/Anne Vogt	
Date	07.07.2015	

EWIW Exterior wall interior wall. Horizontal section. - THERM

Existing


COLOR CODE



DESCRIPTION/CHALLENGES

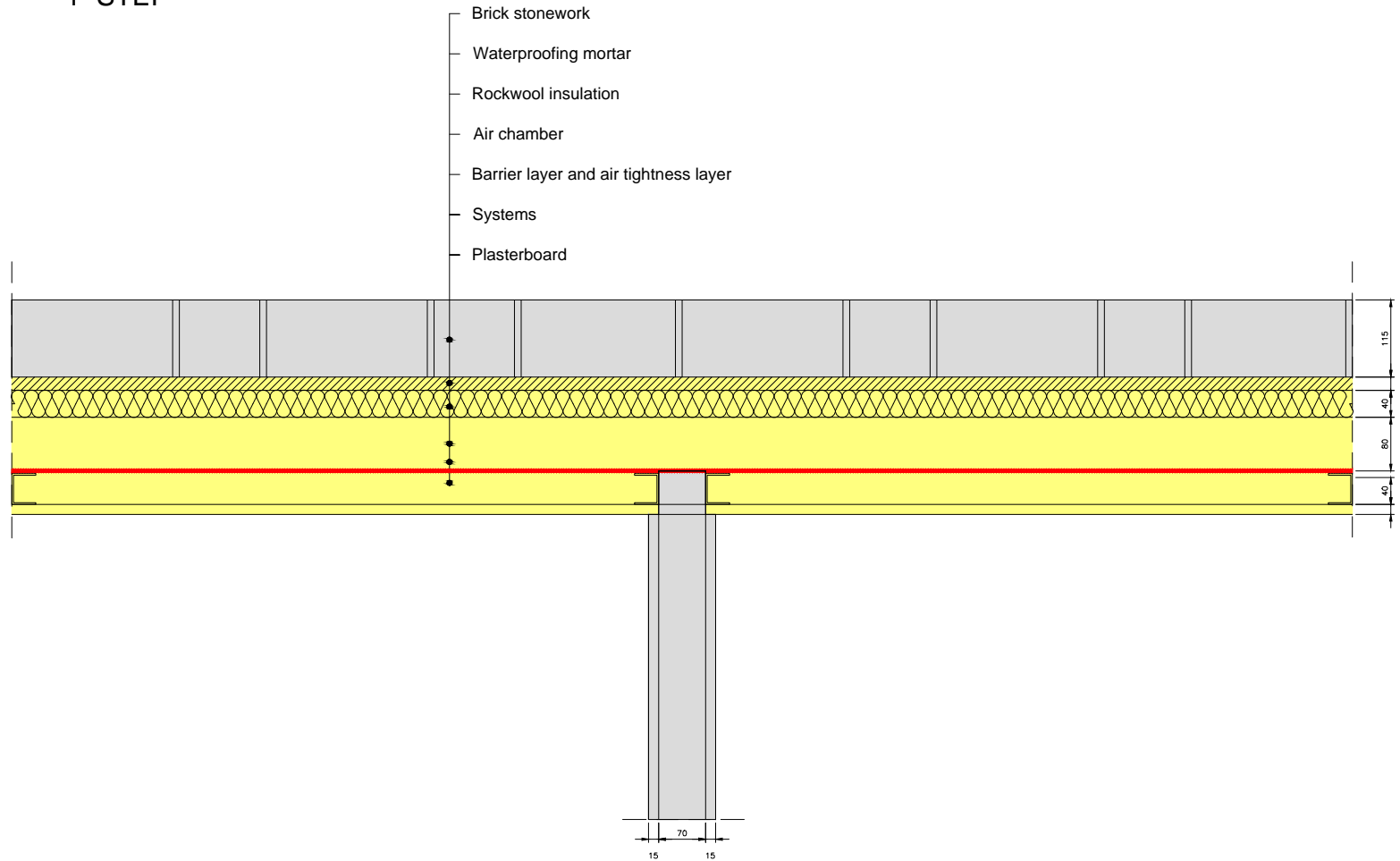
Ψ - value [W/mK] = 1,089

Case Study_OP23_Treviana Social Housing_Spain


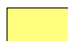


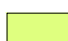

Scale	1:10 @ A4	
Author	Nuria Díaz/Anne Vogt	
Date	07.07.2015	

EWIW | Exterior wall interior wall. Horizontal section.

1 STEP




COLOR CODE

-  Existing building
-  Step 1
-  Step 2
-  Step 3
-  Step 4
-  temporary works (in between steps)

Airtight layer

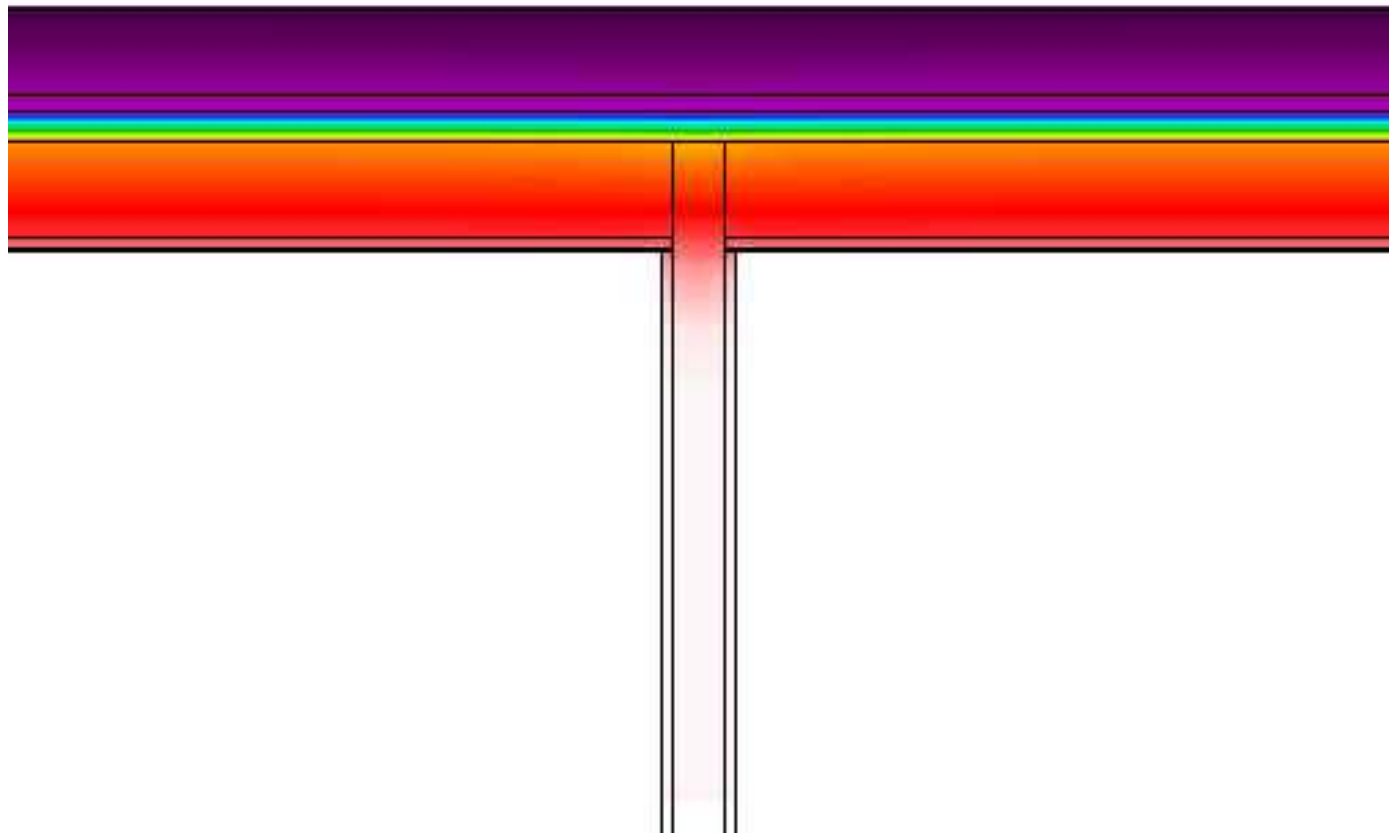
DESCRIPTION/CHALLENGES

Case Study_OP23_Treviana Social Housing_Spain

Scale	1:10 @ A4	
Author	Nuria Díaz/Anne Vogt	
Date	07.07.2015	

EWIW Exterior wall interior wall. Horizontal section. - THERM

Step 1



COLOR CODE



DESCRIPTION/CHALLENGES

Ψ - value [W/mK] = 0.237

Case Study_OP23_Treviana Social Housing_Spain

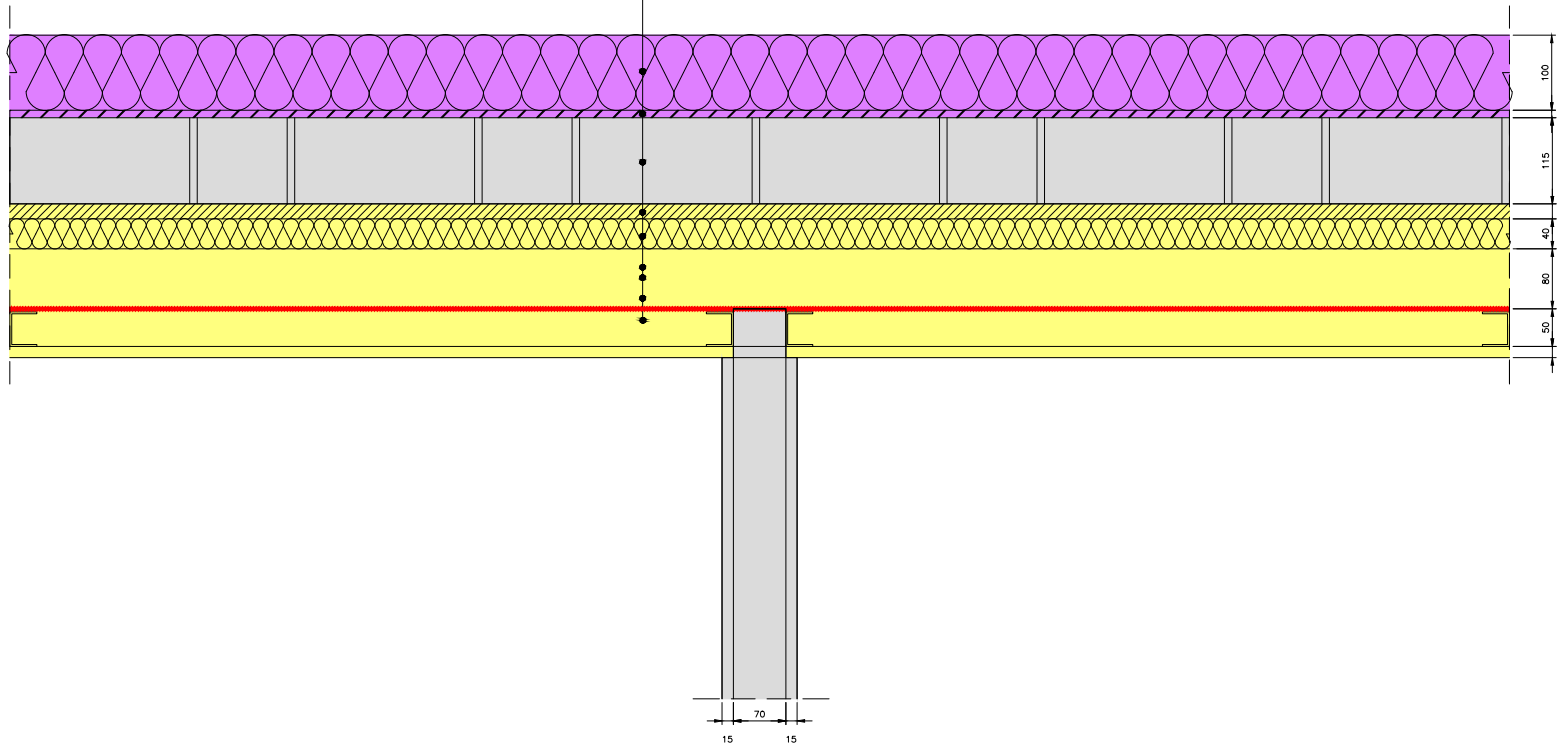
Scale 1:10 @ A4
 Author Nuria Díaz/Anne Vogt
 Date 07.07.2015



EWIW Exterior wall interior wall. Horizontal section.

2 STEP (a)

- External thermal insulation composite system
- Adhesive mortar
- Brick stonework
- Waterproofing mortar
- Rockwool insulation
- Air chamber
- Barrier layer and air tightness layer
- Systems
- Plasterboard



COLOR CODE


- Existing building
- Step 1
- Step 2
- Step 3
- Step 4

--- temporary works
(in between steps)

Airtight layer

DESCRIPTION/CHALLENGES

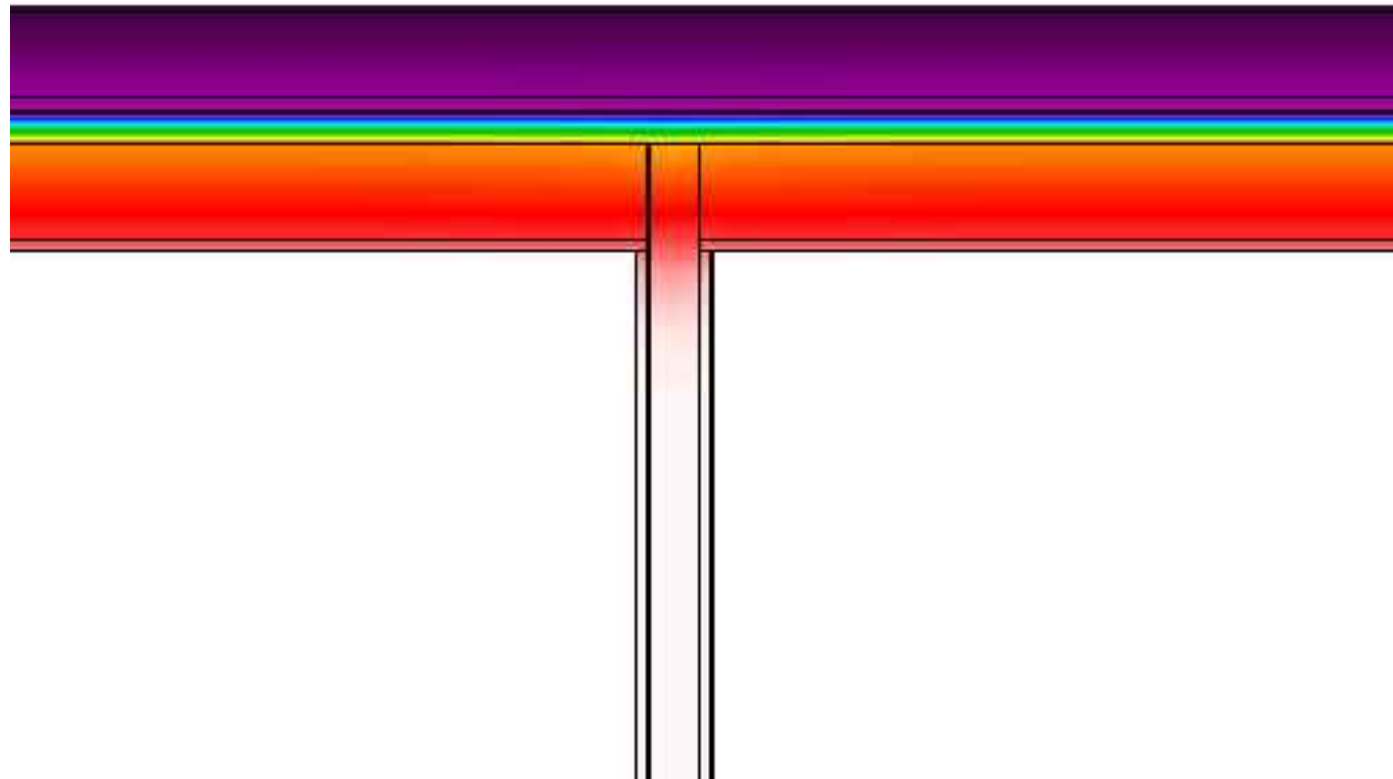
Case Study_OP23_Treviana Social Housing_Spain

Scale	1:10 @ A4	
Author	Nuria Díaz/Anne Vogt	
Date	07.07.2015	

EWIW Exterior wall interior wall. Horizontal section. - THERM

Step 2 (a)

COLOR CODE



DESCRIPTION/CHALLENGES

Ψ - value [W/mK] = 0.050

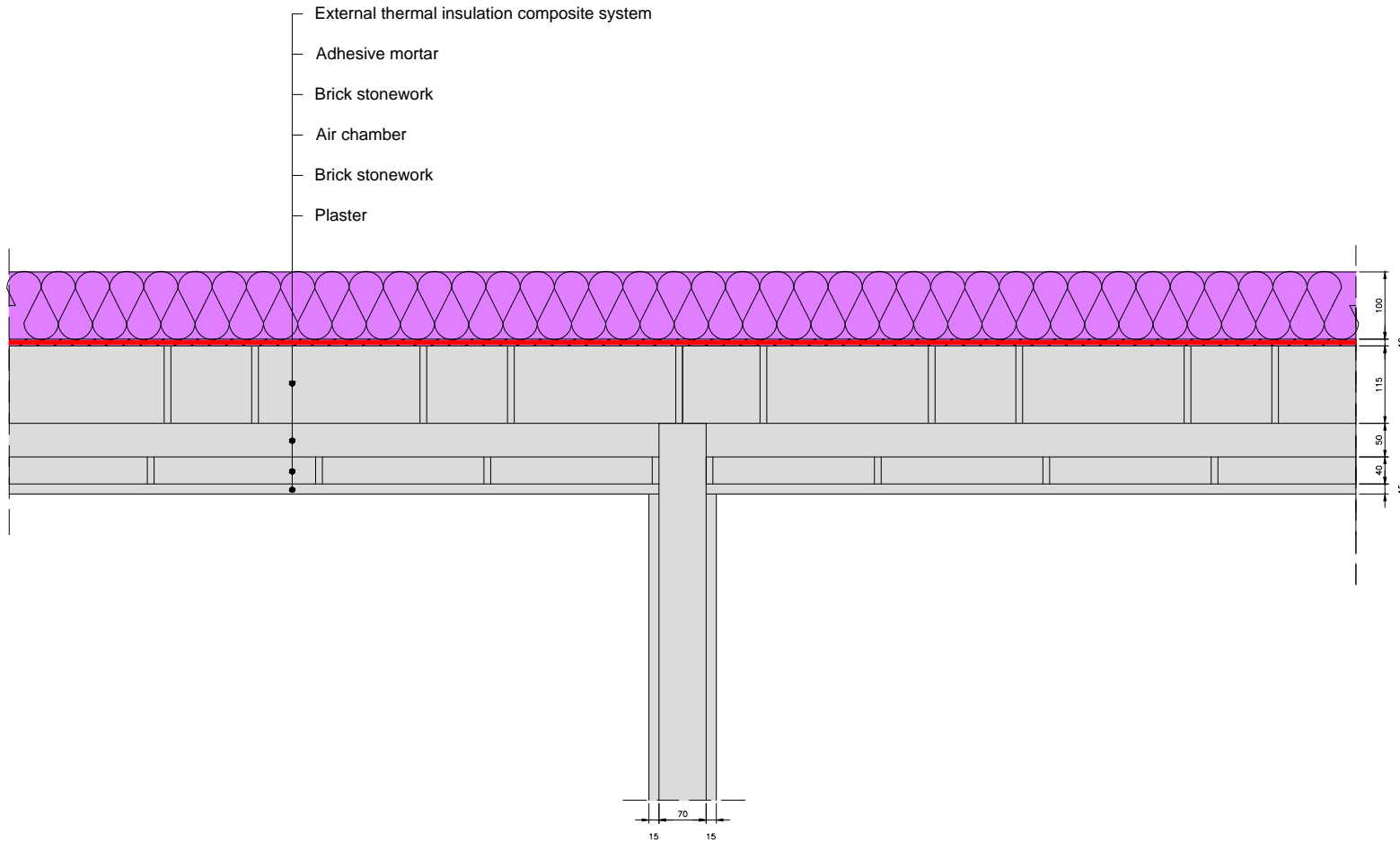
Case Study_OP23_Treviana Social Housing_Spain

Scale 1:10 @ A4
 Author Nuria Díaz/Anne Vogt
 Date 07.07.2015



EWIW Exterior wall interior wall. Horizontal section.

2 STEP (b)



COLOR CODE

- Existing building
- Step 1
- Step 2
- Step 3
- Step 4
- temporary works (in between steps)

Airtight layer

DESCRIPTION/CHALLENGES

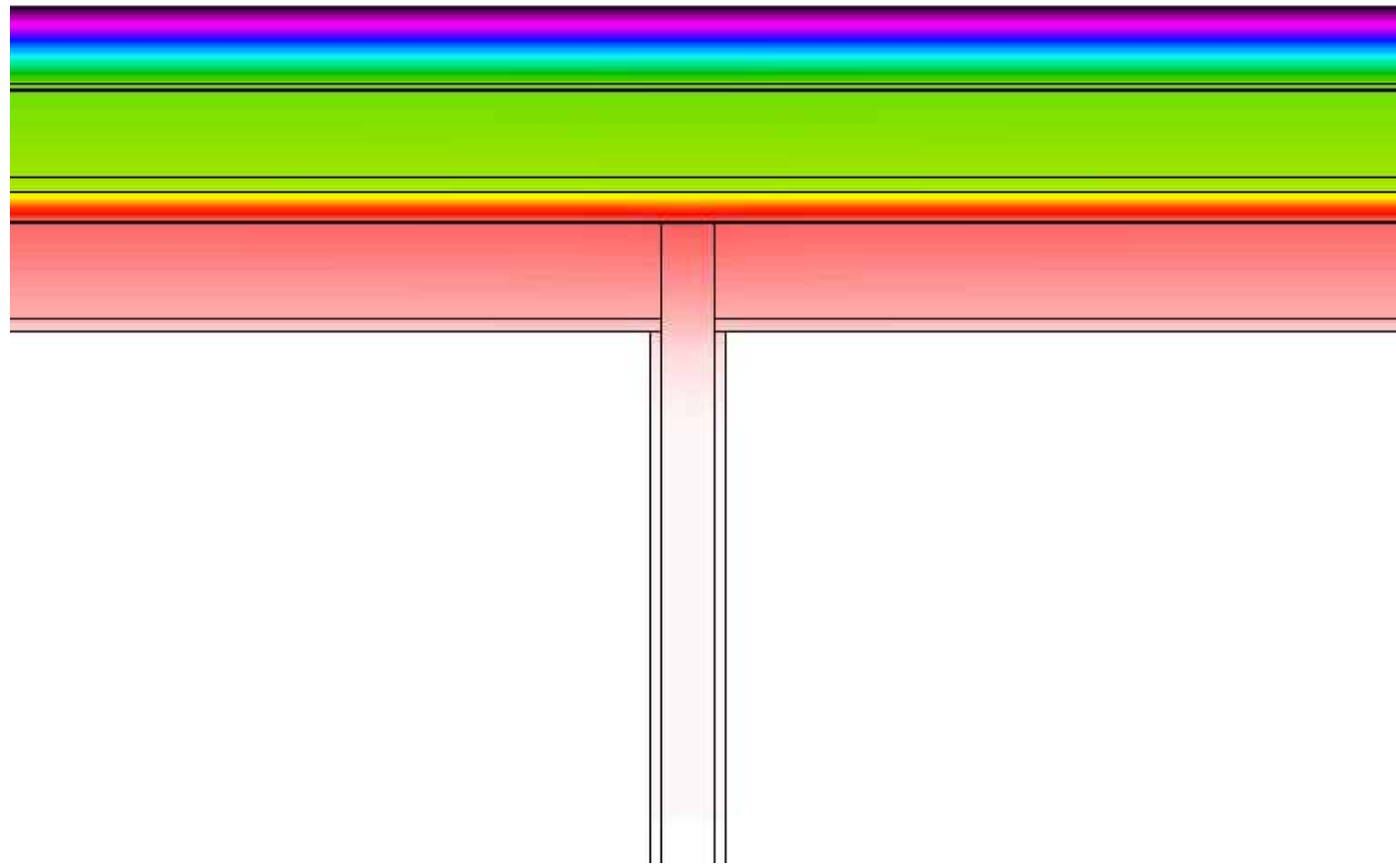
Case Study_OP23_Treviana Social Housing_Spain

Scale 1:10 @ A4
Author Nuria Díaz/Anne Vogt
Date 07.07.2015



EWIW Exterior wall interior wall. Horizontal section. - THERM

Step 2 (b)



COLOR CODE



DESCRIPTION/CHALLENGES

Ψ - value [W/mK] = 0.042