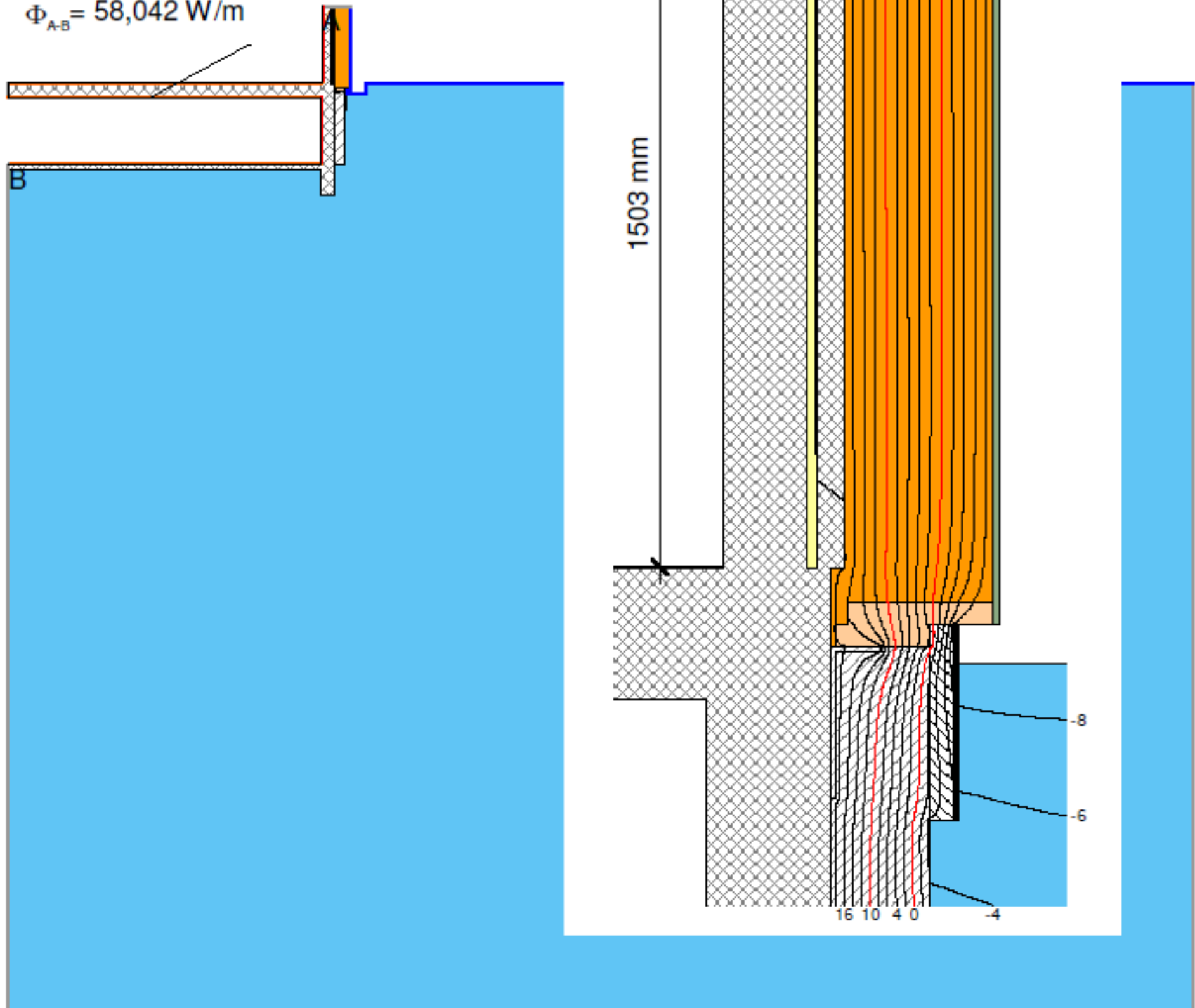


## Sokkel

Emne: Tommerupvej 8B. Sokkel og dørtrin

Tegning: (99)140-01D

$$\Phi_{A-B} = 58,042 \text{ W/m}$$

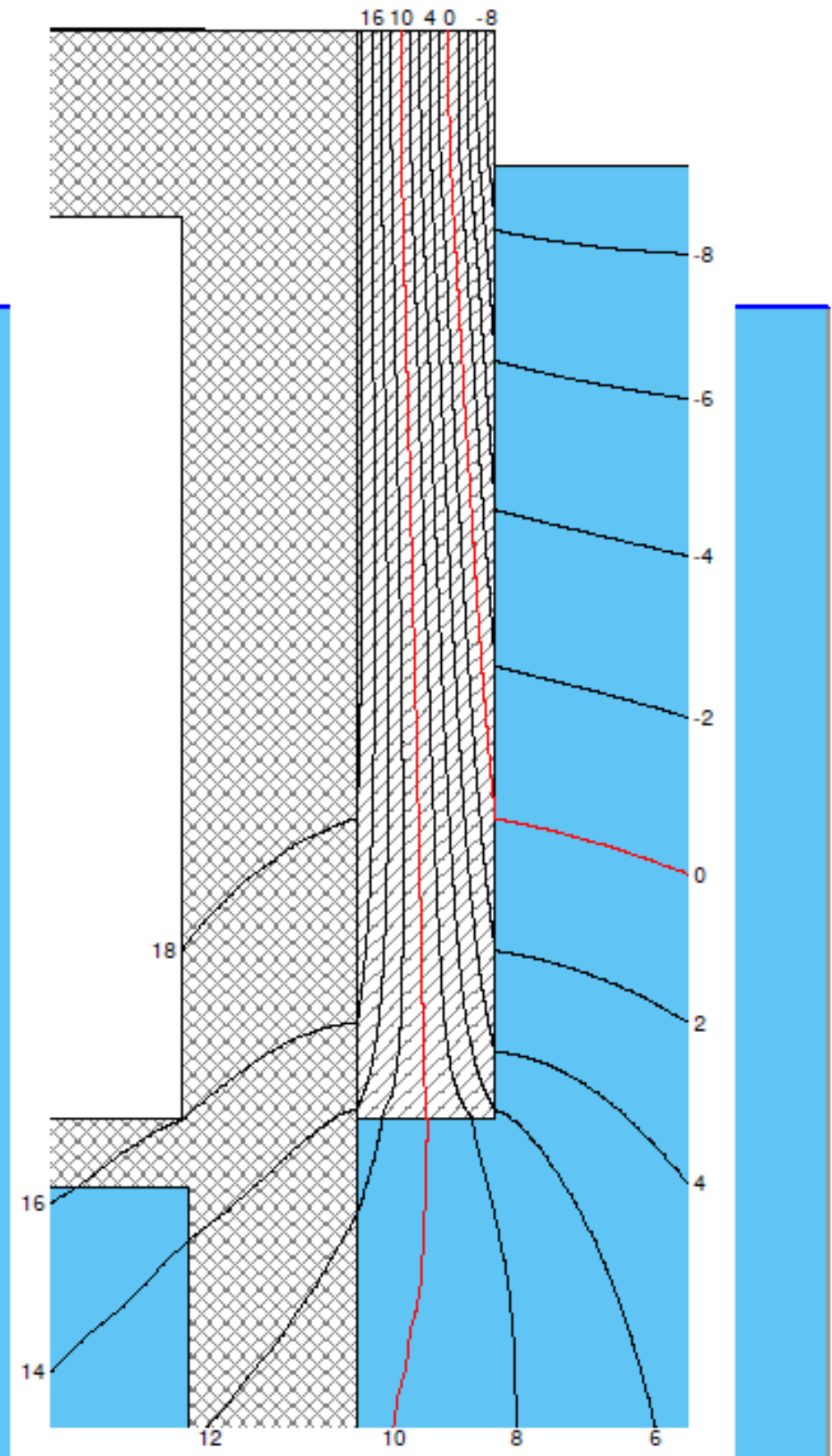
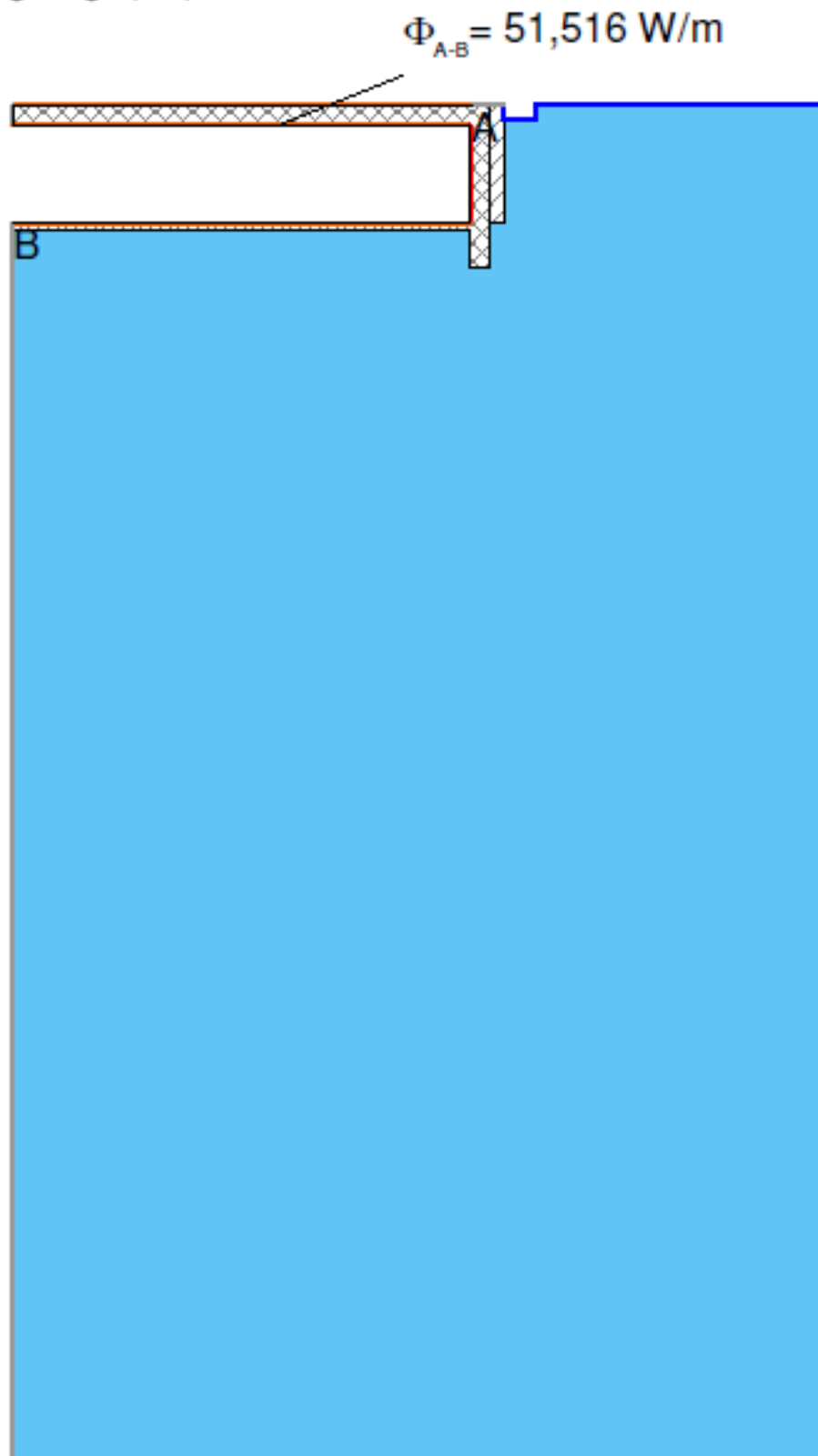


Material	$\lambda$ [W/(m·K)]	$\epsilon$	Boundary Condition	$q$ [W/m <sup>2</sup> ]	$\theta$ [°C]	$R$ [(m <sup>2</sup> ·K)/W]	$\epsilon$
Clay or silt	1,500		Exterior, normal		-10,000	0,040	
Concrete, reinforced (with 1% of steel)	2,300		Exterior, ventilated		-10,000	0,130	
EPS 0,031	0,031		Interior, heat flux, downwards		20,000	0,170	
Isolering 050	0,050		Interior, normal, horizontal		20,000	0,130	
L isolering 037 træ 45/600	0,044, 0,056		Symmetry/Model section	0,000			
Linoleum	0,170						
Oriented strand board (OSB)	0,286, 0,130						
Rockpanel 0,55	0,550						
Softwood (typical construction timber)	0,130						
Steel / EPS 0,031, 3D equivalent R 250-1800	6,971						
XPS 0,038	0,038						

## Sokkel ref

Emne: Tommerupvej 8B. Sokkel og dørtrin

Tegning: (99)140-01D



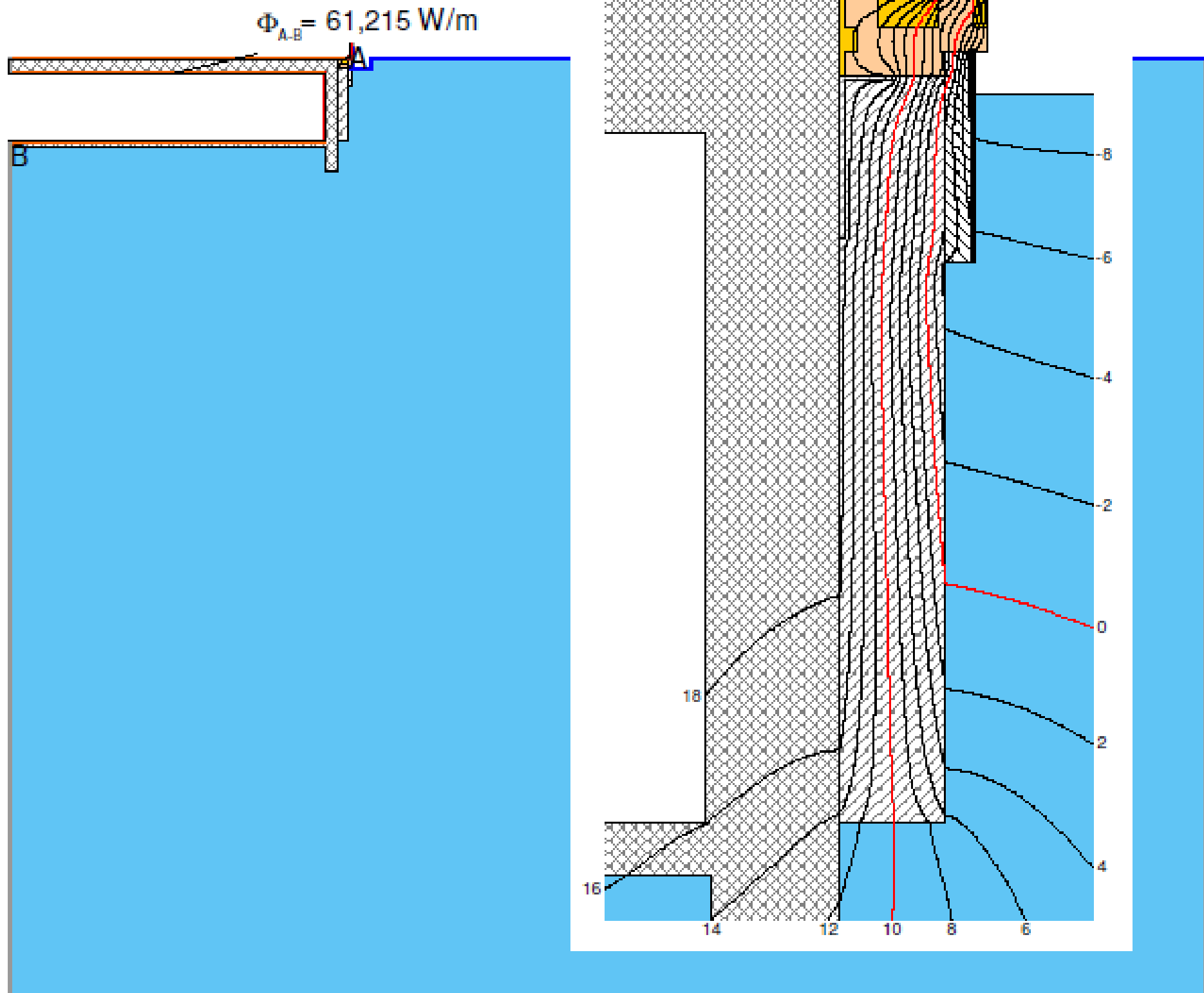
Material	$\lambda$ [W/(m·K)]	$\epsilon$
Clay or silt	1,500	
Concrete, reinforced (with 1% of steel)	2,300	
EPS 0,031	0,031	
Linoleum	0,170	

Boundary Condition	$q$ [W/m <sup>2</sup> ]	$\theta$ [°C]	$R$ [(m <sup>2</sup> ·K)/W]	$\epsilon$
Exterior, normal	-10,000		0,040	
Interior, heat flux, downwards	20,000		0,170	
Interior, normal, horizontal	20,000		0,130	
Symmetry/Model section	0,000			

## Dør nede 3D

Emne: Tommerupvej 8B. Sokkel og dørtrin

Tegning: (99)140-03A

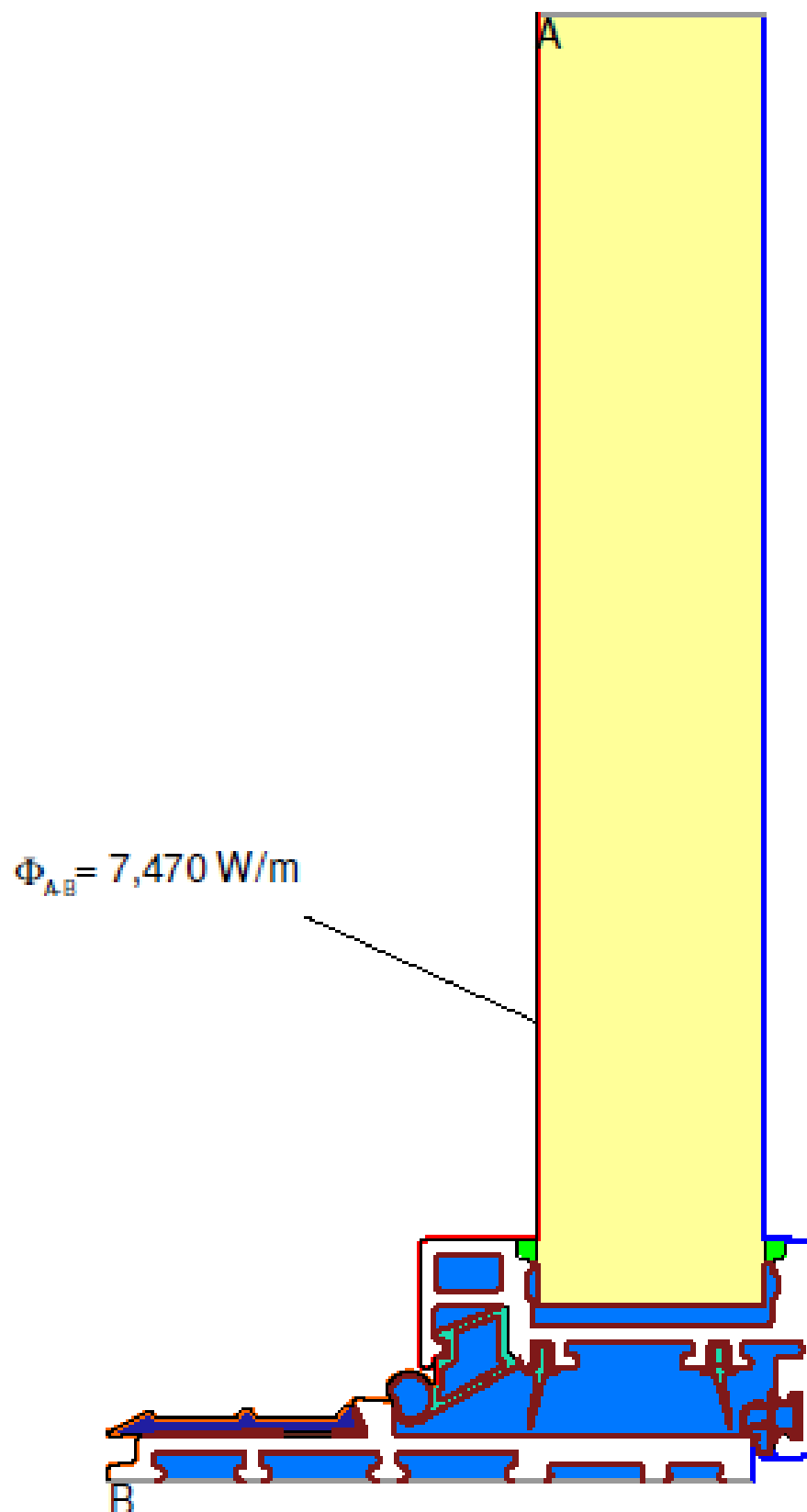


Material	$\lambda$ [W/(m·K)]	$\epsilon$	Boundary Condition	$q$ [W/m <sup>2</sup> ]	$\theta$ [°C]	$R$ [(m <sup>2</sup> ·K)/W]	$\epsilon$
Aluminium (Si Alloys)	160,000	0,900	Epsilon 0.9				0,900
Clay or silt	1,500		Exterior, normal		-10,000	0,040	
Concrete, reinforced (with 1% of steel)	2,300		Interior, heat flux, downwards		20,000	0,170	
EPDM (ethylene propylene diene monomer)	0,250	0,900	Interior, normal, horizontal		20,000	0,130	
EPS 0,031	0,031		Symmetry/Model section	0,000			
Elastomeric foam, flexible (1)	0,050	0,900					
Fuge	0,400	0,900					
Linoleum	0,170						
Mineral wool 0,037	0,037	0,900					
Oriented strand board (OSB)	0,286	0,130					
PVC (polyvinylchloride), rigid	0,170	0,900					
Panel 0,035	0,035	0,900					
Rockpanel 0,55	0,550						
Softwood (typical construction timber)	0,130						
Steel / EPS 0,031, 3D equivalent R 100-500	10,025						
Unventilated air cavity	anisotropic						
XPS 0,038	0,038						
Xiframe GRP 0,223	0,223	0,900					

## Dør med panel

Emne: Tommerupvej 8B. Sokkel og dørtrin

Tegning: (99)140-03A



Material	$\lambda$ [W/(m·K)]	$\epsilon$	Boundary Condition	$q$ [W/m <sup>2</sup> ]	$\theta$ [°C]	$R$ [(m <sup>2</sup> ·K)/W]	$\epsilon$
Aluminium (Si Alloys)	160,000	0,900	Epsilon 0.9				0,900
EPDM (ethylene propylene diene monomer)	0,250	0,900	Exterior, normal		-10,000	0,040	
Fuge	0,400	0,900	Interior, heat flux, downwards		20,000	0,170	
PVC (polyvinylchloride), rigid	0,170	0,900	Interior, normal, horizontal		20,000	0,130	
Panel 0,035	0,035	0,900	Symmetry/Model section	0,000			
Unventilated air cavity	anisotropic						
Xiframe GRP 0,223	0,223	0,900					