

EuroPHit_OP21_MosArt_Family Home_Ireland

Scale 1:10 @ A4

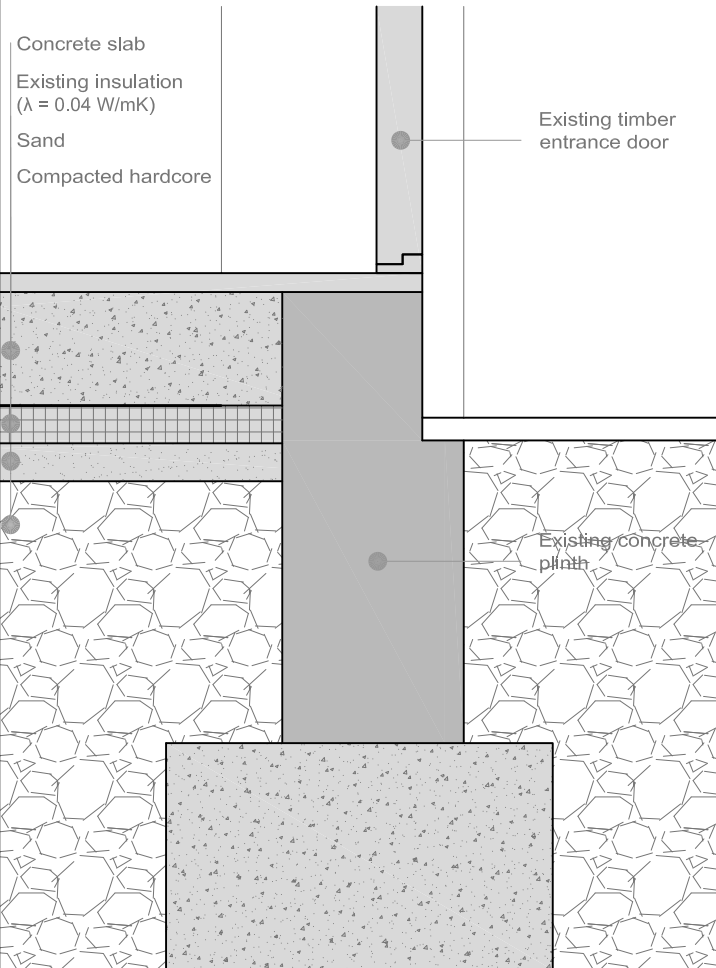
Author Mariana Moreira

Date 16.03.2016

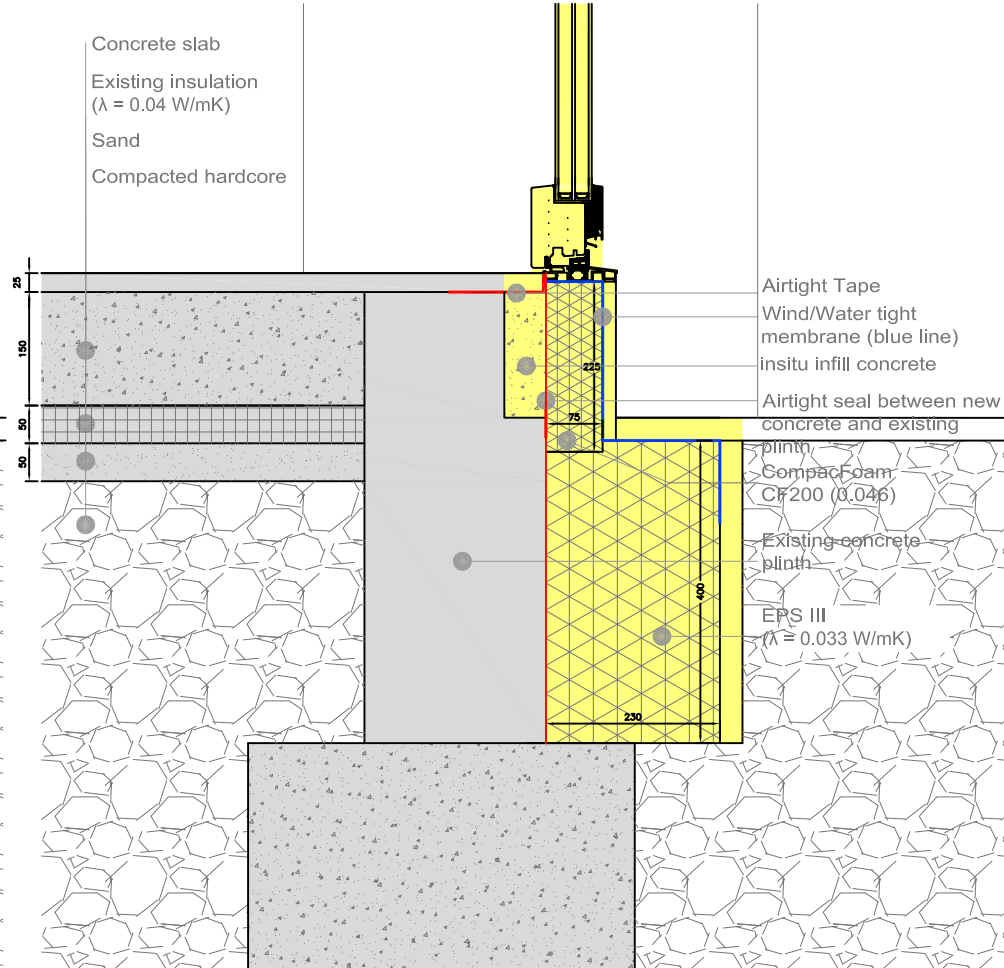


EDTH01 Door threshold detail for masonry wall







EXISTING



1 STEP



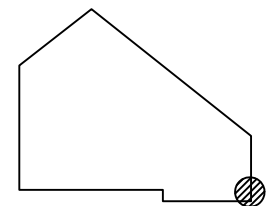
COLOR CODE

-  Existing building
-  Step 1
-  Step 2
-  Step 3
-  Step 4
-  temporary works (in between steps)

Airtight layer

DESCRIPTION/CHALLENGES

In order to assure a continuous airtight line, it has been decided to keep the airtight layer along the outside of the existing block wall as the render. The render will be connected to the door frame with an airtight tape. Reinforced insulation block will be installed under the threshold and all window cills to minimise thermal bridge at these junctions.



Co-funded by the Intelligent Energy Europe Programme of the European Union

The sole responsibility for the content of this publication lies with the authors. It does not necessarily reflect the opinion of the European Union. Neither the EACI nor the European Commission are responsible for any use that may be made of the information contained therein.

EuroPHit

EuroPHit_OP21_MosArt_Family Home_Ireland

Scale 1:10 @ A4

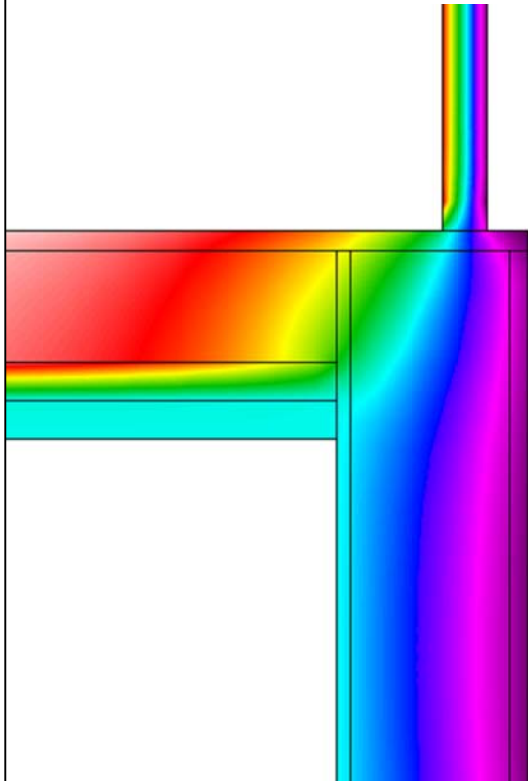
Author Mariana Moreira

Date 16.03.2016



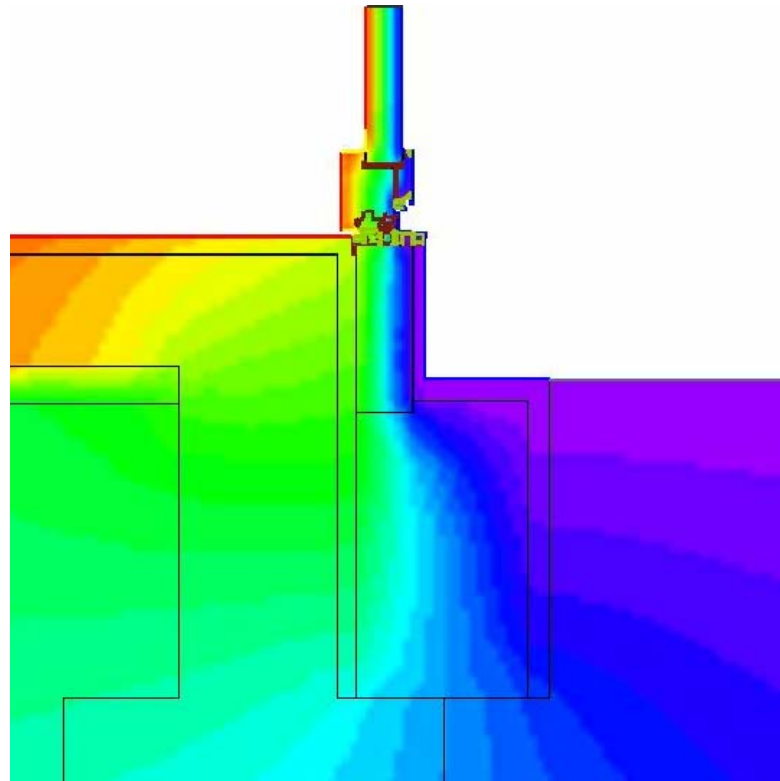
EDTH01 Door threshold detail for masonry wall - THERM

EXISTING



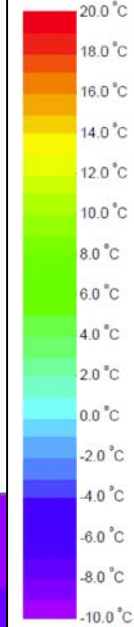
Ψ - value [W/mK] = 0.469

1 STEP



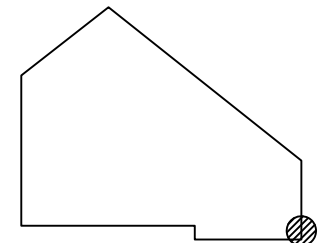
Ψ - value [W/mK] = 0.231

COLOR CODE



DESCRIPTION/CHALLENGES

In order to assure a continuous airtight line, it has been decided to keep the airtight layer along the outside of the existing block wall as the render. The render will be connected to the door frame with an airtight tape. Reinforced insulation block will be installed under the threshold and all window cills to minimise thermal bridge at these junctions.



Co-funded by the Intelligent Energy Europe Programme of the European Union

The sole responsibility for the content of this publication lies with the authors. It does not necessarily reflect the opinion of the European Union. Neither the EACI nor the European Commission are responsible for any use that may be made of the information contained therein.

EuroPHit

EuroPHit_OP21_MosArt_Family Home_Ireland

Scale -
Author Mariana Moreira
Date 16.03.2016



EDTH01 Door threshold detail for masonry wall - Site Photo

BEFORE

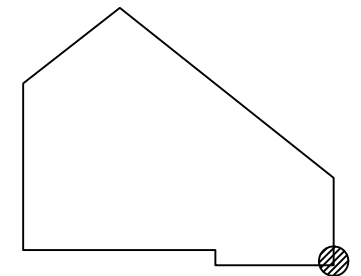


AFTER



DESCRIPTION/CHALLENGES

In order to assure a continuous airtight line, it has been decided to keep the airtight layer along the outside of the existing block wall as the render. The render will be connected to the door frame with an airtight tape. Reinforced insulation block will be installed under the threshold and all window cills to minimise thermal bridge at these junctions.



Co-funded by the Intelligent Energy Europe Programme of the European Union

The sole responsibility for the content of this publication lies with the authors. It does not necessarily reflect the opinion of the European Union. Neither the EACI nor the European Commission are responsible for any use that may be made of the information contained therein.

EuroPHit