

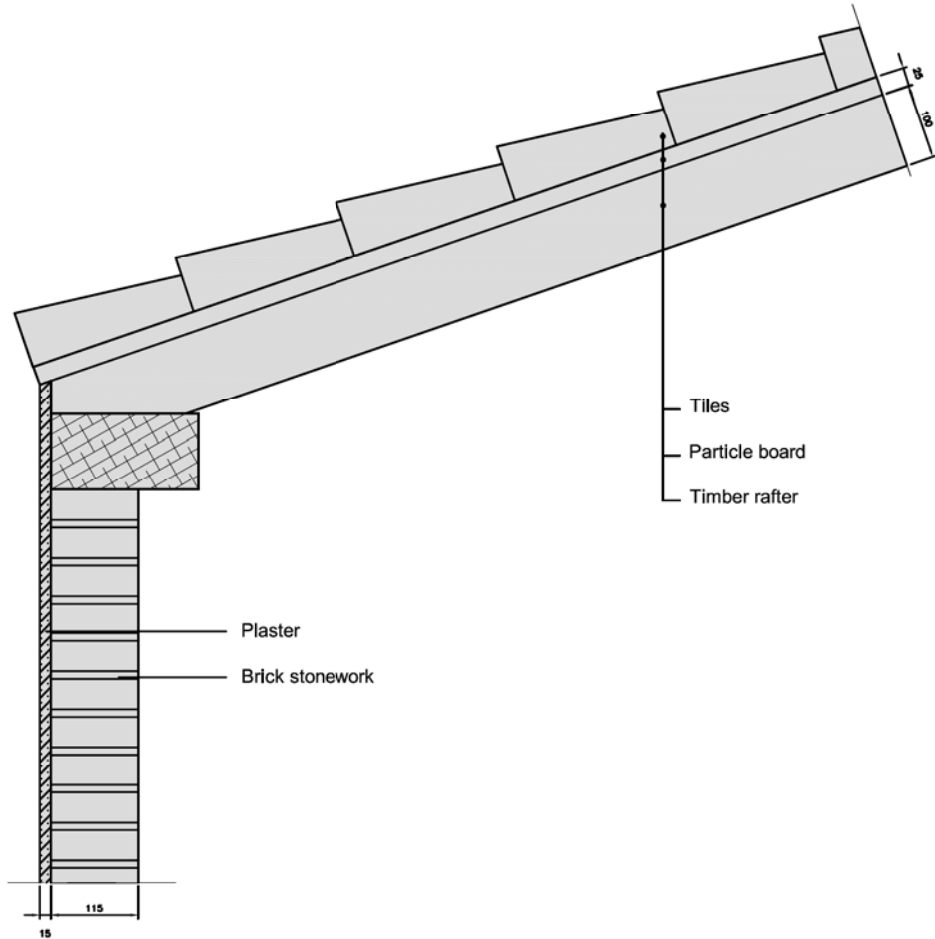
Case Study_CS16_HouseCentón_Spain

Scale 1:10 @ A4
 Author Nuria Díaz/Anne Vogt
 Date 28.04.2015



ROEA | Roof eaves. Vertical section.

EXISTING



COLOR CODE

- Existing building
- Step 1
- Step 2
- Step 3
- Step 4

temporary works
(in between steps)

Airtight layer

DESCRIPTION/CHALLENGES

Exterior wall and roof with no insulation.
 Poor roof conditions.

Case Study_CS16_HouseCentón_Spain

Scale 1:10 @ A4

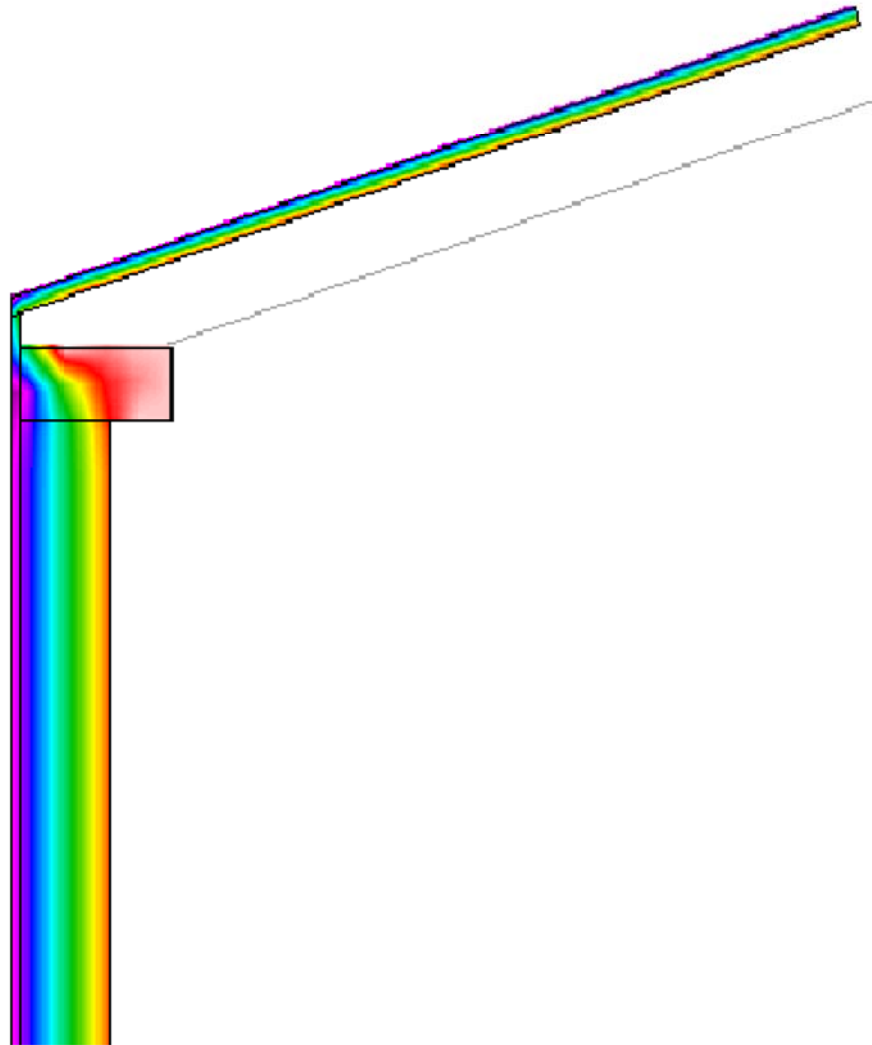
Author Nuria Díaz/Anne Vogt

Date 28.04.2015



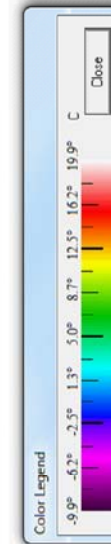
1.1.1 | DET 06_Neighbor's wall and concrete pillar corner connection. Horizontal section. - THERM

Existing



Ψ - value [W/mK] = 1.554

COLOR CODE



DESCRIPTION/CHALLENGES

Exterior wall and roof with no insulation.
Poor roof conditions.

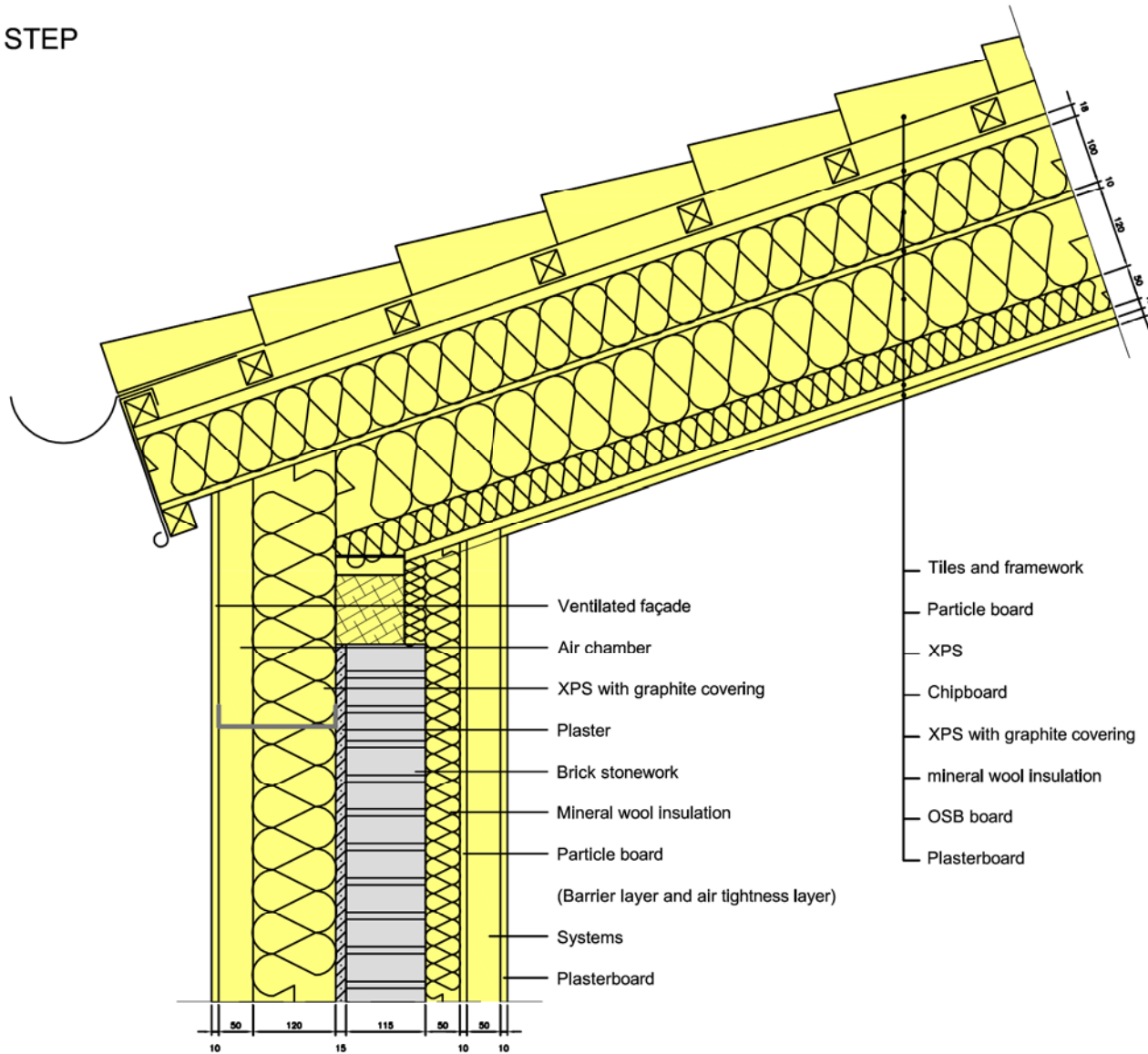
Case Study_CS16_HouseCentón_Spain

Scale 1:10 @ A4
 Author Nuria Díaz/Anne Vogt
 Date 28.04.2015



ROEA | Roof eaves. Vertical section.

1 STEP



COLOR CODE

- Existing building
- Step 1
- Step 2
- Step 3
- Step 4

--- temporary works
(in between steps)

Airtight layer

DESCRIPTION/CHALLENGES

Continuous insulation layer.

Thermal bridge free detail.

Case Study_CS16_HouseCentón_Spain

Scale 1:10 @ A4

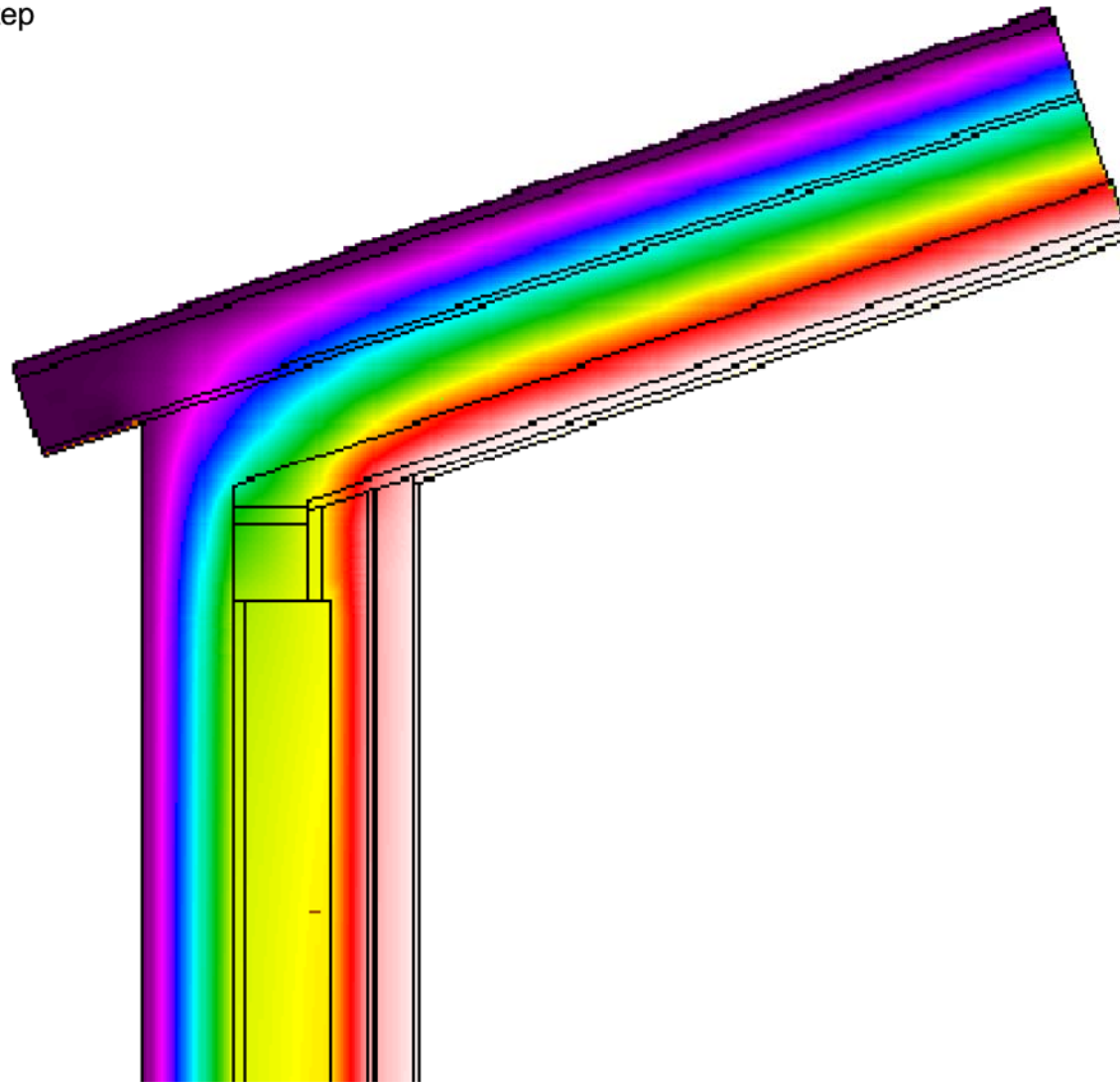
Author Nuria Díaz/Anne Vogt

Date 28.04.2015



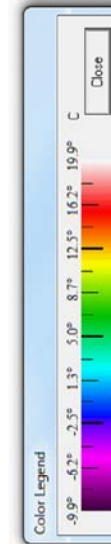
1.1.1 | DET 06_Neighbor's wall and concrete pillar corner connection. Horizontal section. - THERM

Final Step



Ψ - value [W/mK] = - 0.014

COLOR CODE



DESCRIPTION/CHALLENGES

Continuous insulation layer.

Thermal bridge free detail.