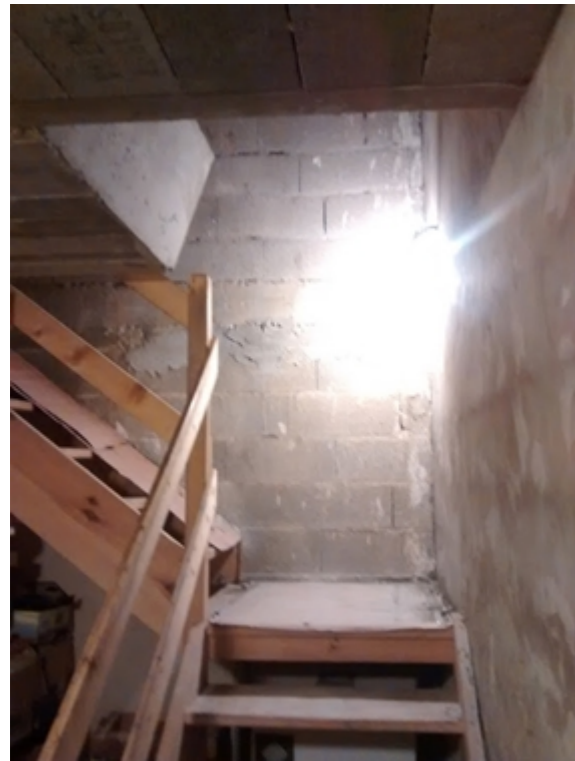


EXISTING



Plaster render on inner face of staircase walls for airtightness. Last stair step cut to match new floor level

STEP 1



COLOR CODE

- Existing building
- Step 1
- Step 2
- Step 3
- Step 4
- temporary works (in between steps)

**Airtight layer**

---

DESCRIPTION/CHALLENGES

Passive House Door flushed on outer face. 180 mm PU floor insulation pushed until door sill to get continuous thermal protection



Staircase slab insulated by two layers of rigid tongue and groove PU panels (100+80 mm 0.022 W/m.K) + waterproof woodfiber panel 19 mm



NOTES