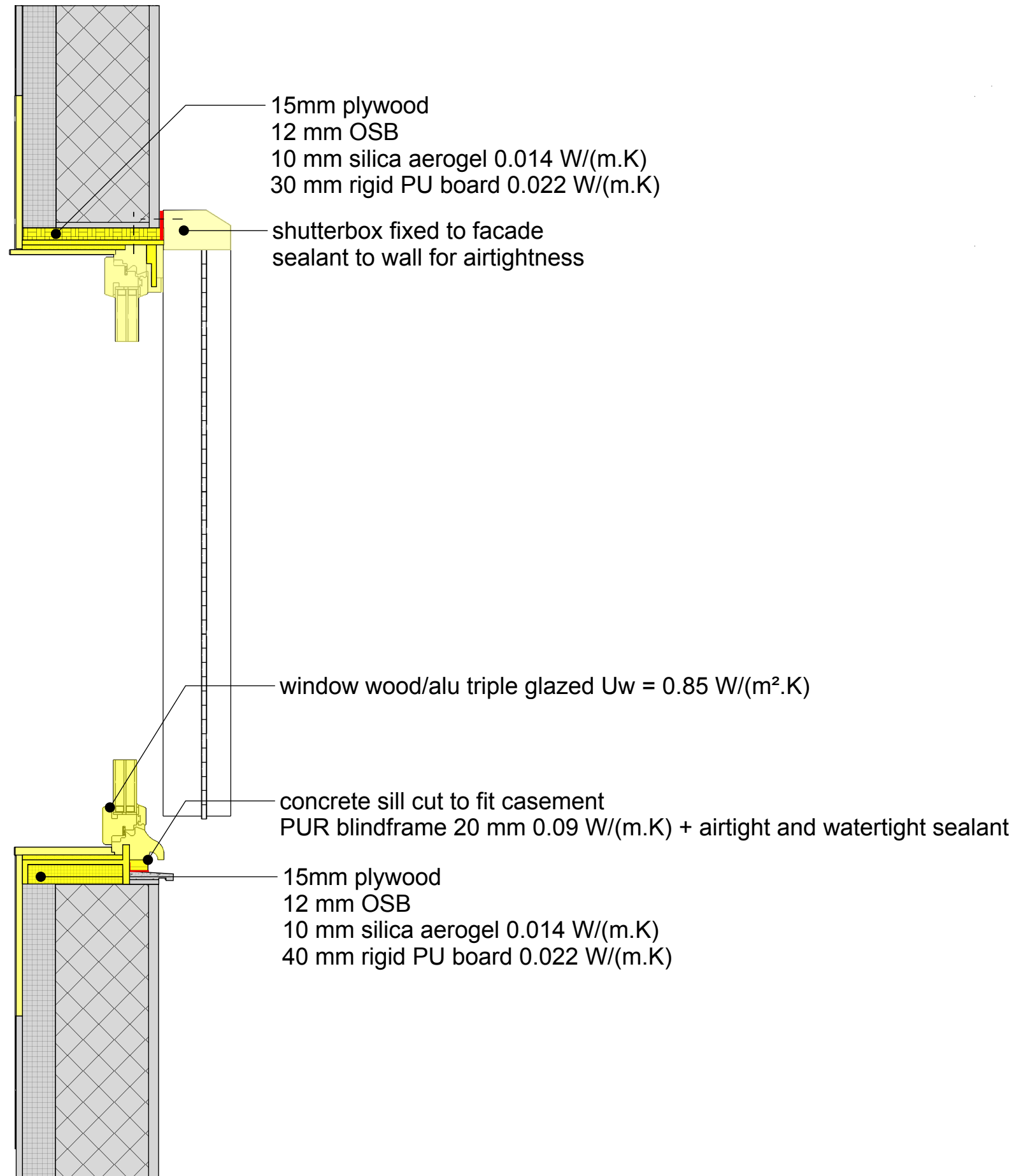


Detail: Window and wall - Vertical cut

1st STEP



COLOR CODE

- Existing building
- Step 1
- Step 2
- Step 3
- Step 4
- temporary works (in between steps)

Airtight layer

DESCRIPTION/CHALLENGES

NOTES

Airtight layer will be placed on the outer face of the masonry during the next step (ETICS)