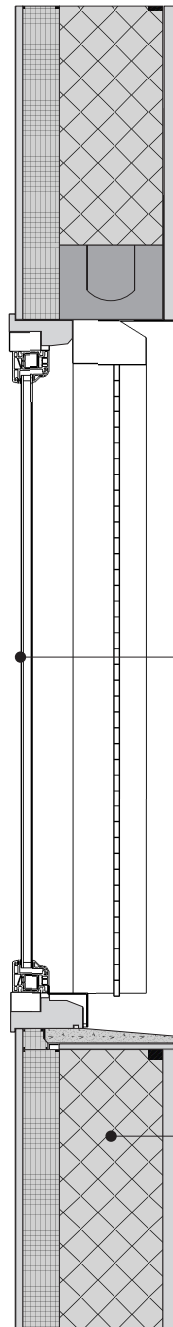


Detail: Window and wall - Vertical cut

EXISTING



existing windows:
uPVC frame double glazed
installed on timber casings of initial windows
external rolling shutter

existing wall:
gypsum board
70mm PUR board
200mm concrete hollow blocks
20mm cement render

COLOR CODE

- Existing building
- Step 1
- Step 2
- Step 3
- Step 4
- temporary works (in between steps)

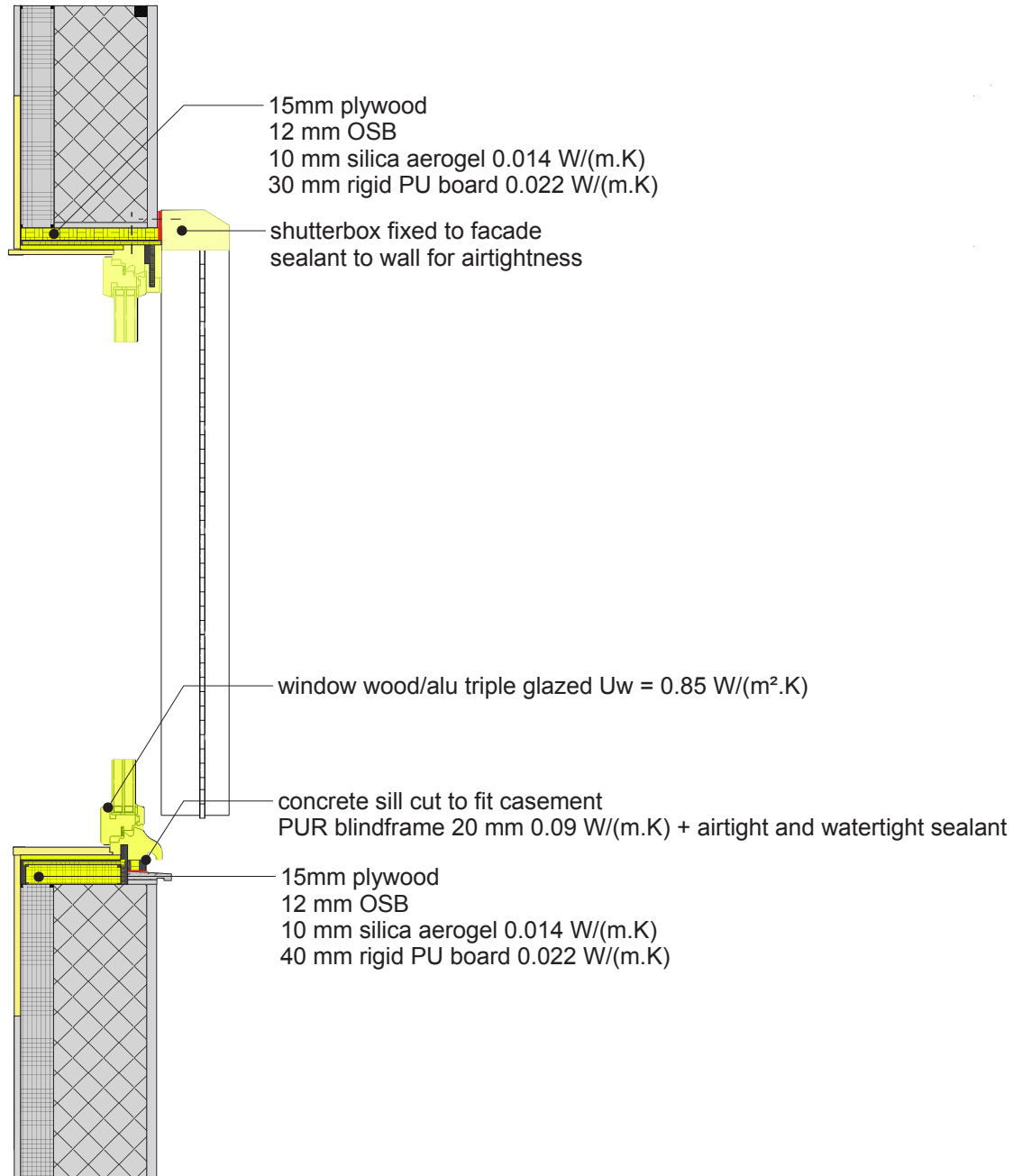
Airtight layer

DESCRIPTION/CHALLENGES

NOTES

Detail: Window and wall - Vertical cut

1st STEP



COLOR CODE

- Existing building
- Step 1
- Step 2
- Step 3
- Step 4
- temporary works (in between steps)

Airtight layer

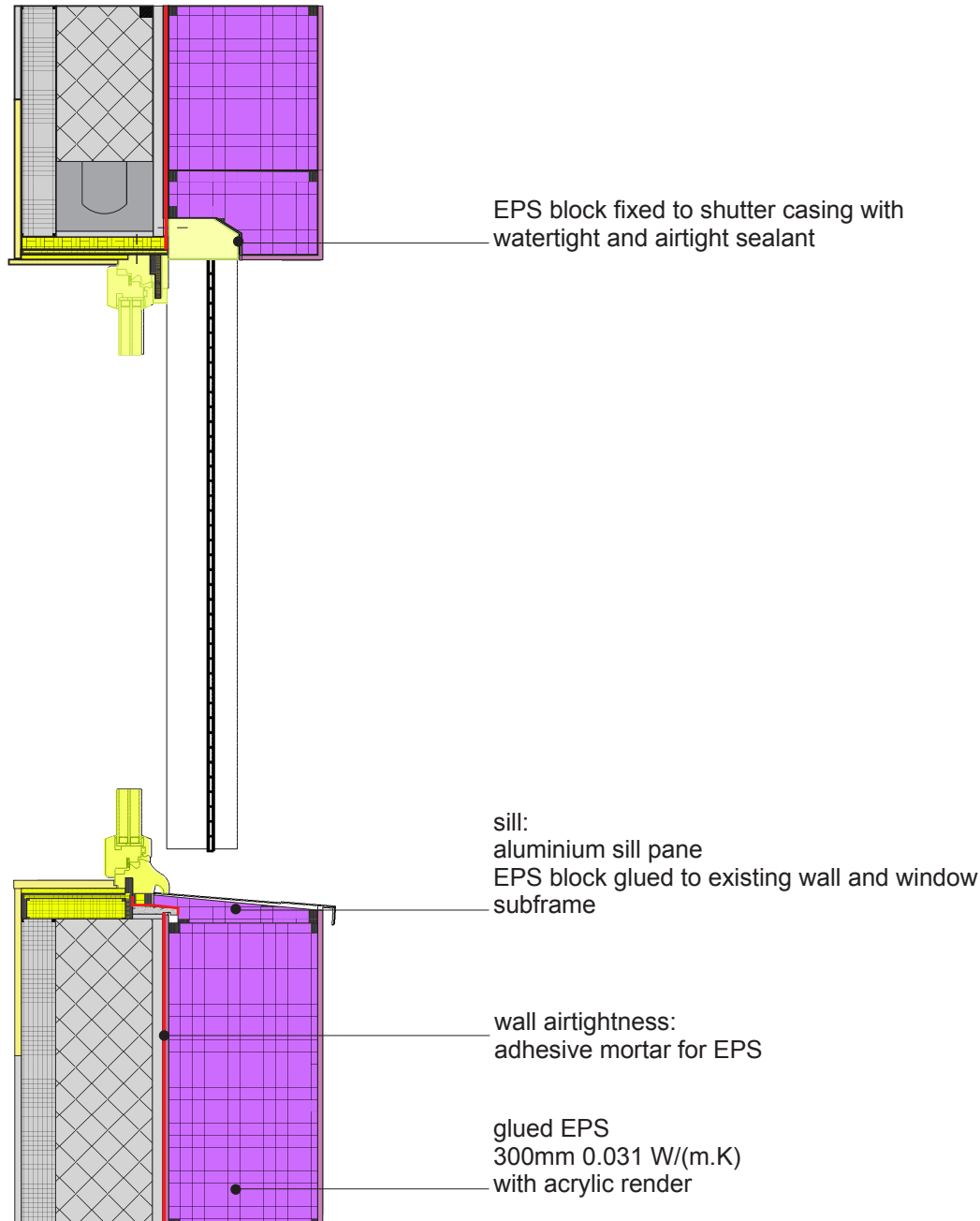
DESCRIPTION/CHALLENGES

NOTES

Airtight layer will be placed on the outer face of the masonry during the next step (ETICS)

Detail: Window and wall - Vertical cut

2nd STEP



COLOR CODE

- Existing building
- Step 1
- Step 2
- Step 3
- Step 4
- temporary works (in between steps)

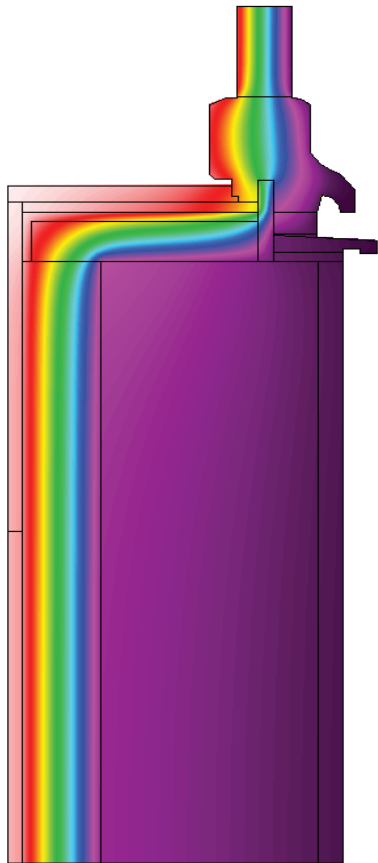
Airtight layer

DESCRIPTION/CHALLENGES

The last step consists in placing the exterior insulation.
 EPS blocks cut to fit casings and sills (hot-wire or prefab elements)

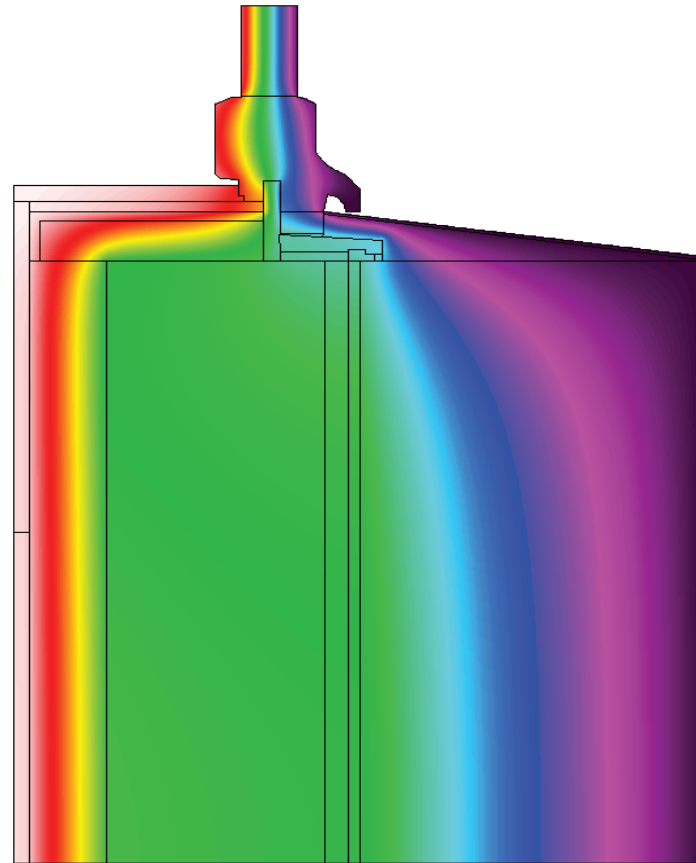
NOTES

First Step



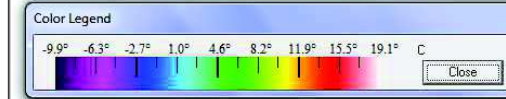
Ψ - value [W/mK] = 0.04

Final Step



Ψ - value [W/mK] = 0.06

COLOR CODE



DESCRIPTION/CHALLENGES

First step :
The combined insulation layer with PU board and aerogel guarantees warm interior surface temperatures at sill.

Second step :
EPS external wall insulation covers the existing sill