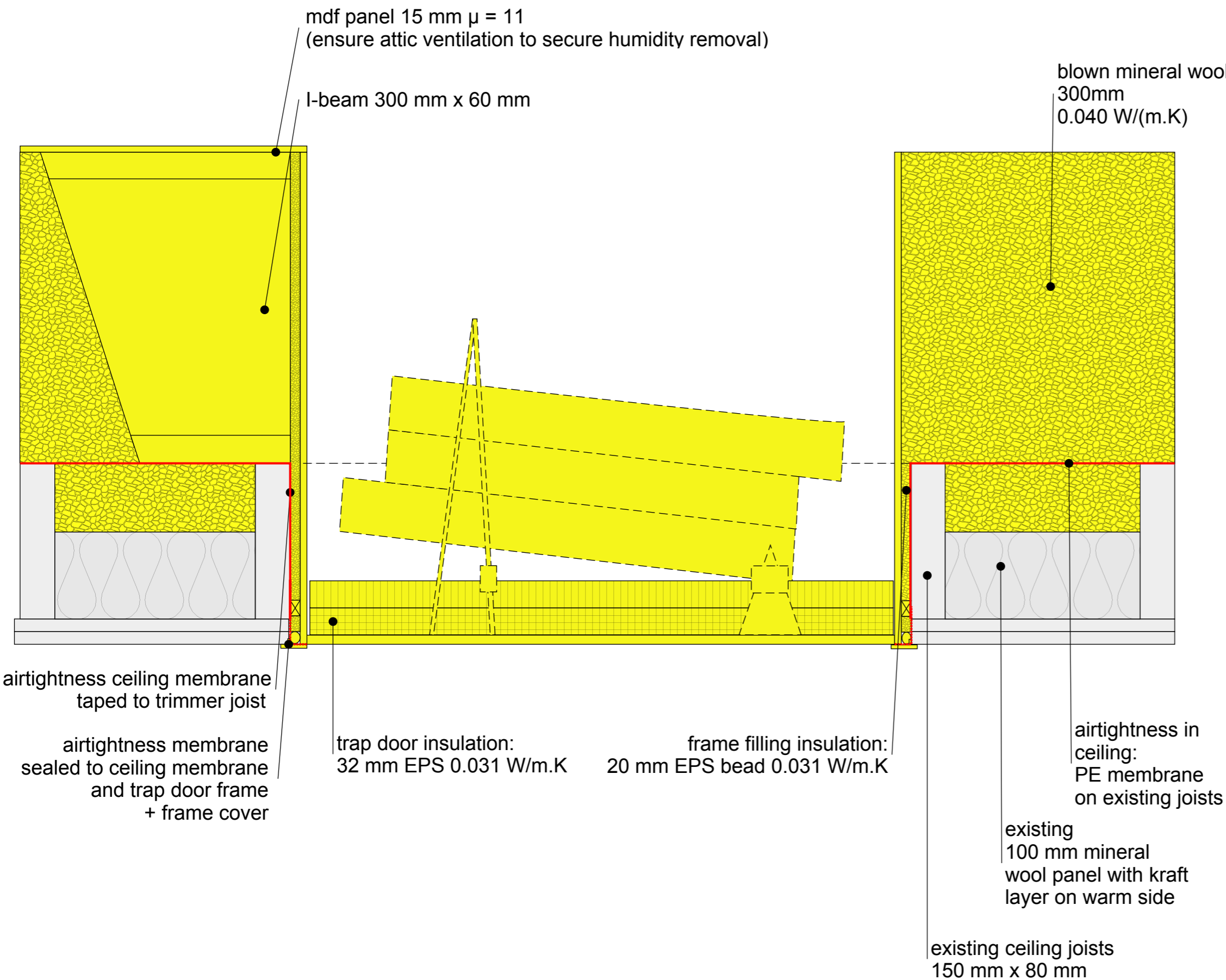
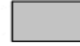
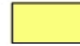


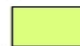
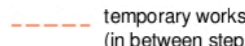


1st STEP



COLOR CODE

-  Existing building
-  Step 1
-  Step 2
-  Step 3
-  Step 4
-  temporary works  
(in between steps)

Airtight layer

DESCRIPTION/CHALLENGES

Existing loft hatch trimmer extended to bring ventilation unit up the attic.

Target U-value for trap door including installation thermal bridge < 1.0 W/(m<sup>2</sup>.K)

Trap door dimensions 600 mm x 1000 mm

Access to ventilation unit via I-beam frame supporting walkable mdf panel

NOTES

Works with tenants in situ