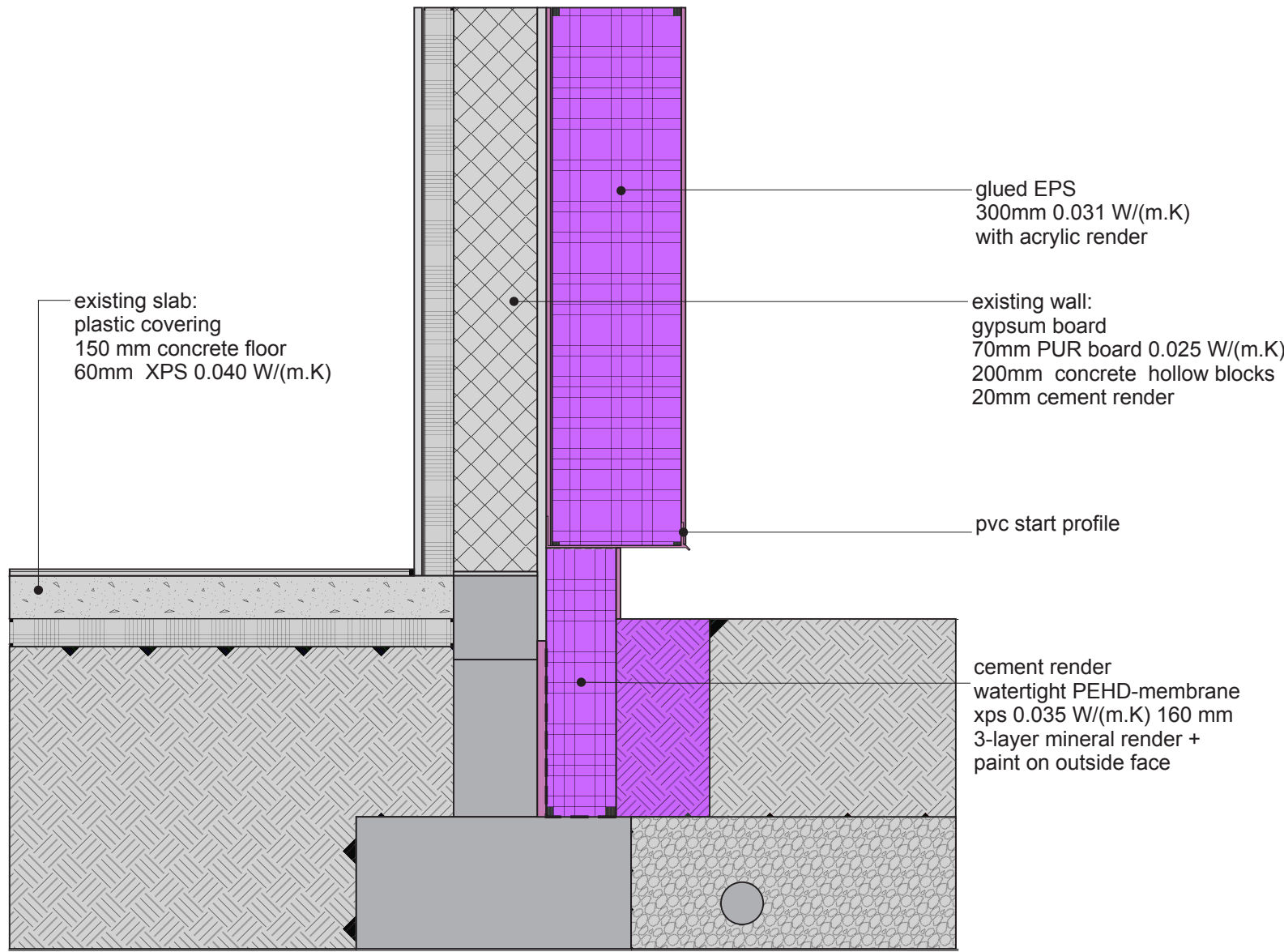


FSEW Detail: Slab on grade / Wall

1st STEP



COLOR CODE

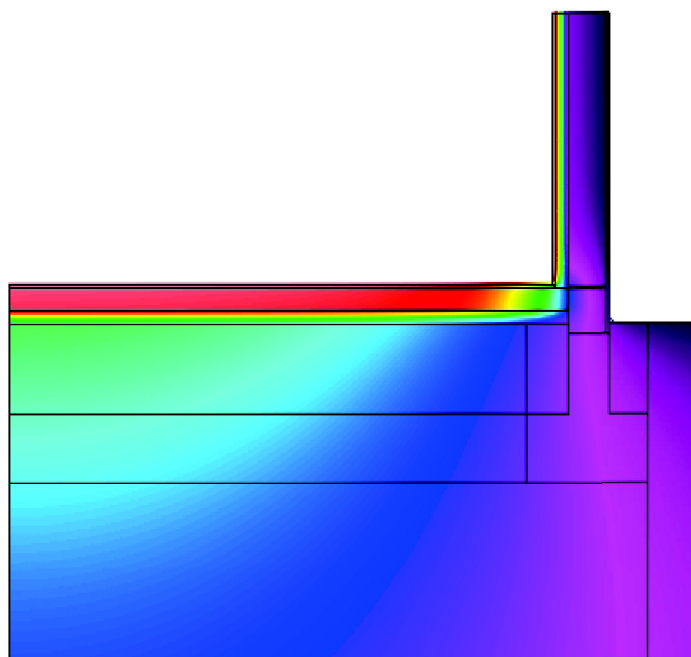
- Existing building
- Step 1
- Step 2
- Step 3
- Step 4
- temporary works (in between steps)

Airtight layer

DESCRIPTION/CHALLENGES

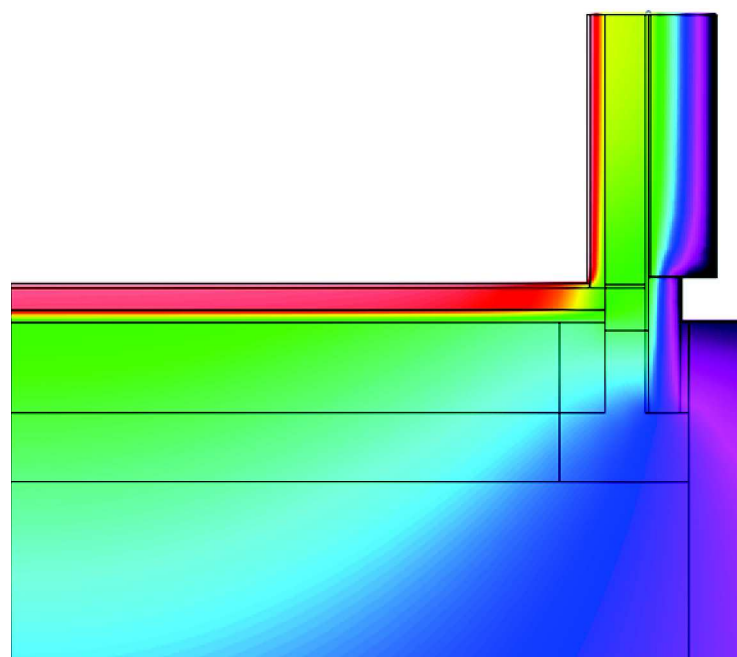
NOTES

EXISTING



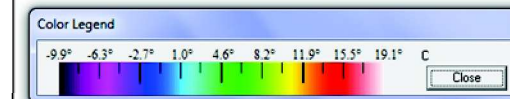
Ψ - value [W/mK] = 0.43

Final Step



Ψ - value [W/mK] = 0.06

COLOR CODE



DESCRIPTION/CHALLENGES

First step :
Condensation risk at interface between masonry and interior insulation. Cold floor temperature near base of the wall due to significant thermal bridge.

Second step :
The exterior insulation (EPS 300mm 0.031 W/(m.K)) ensures a higher temperature of the wall. The perimeter insulation (XPS) mitigates the thermal bridge at foundation level.