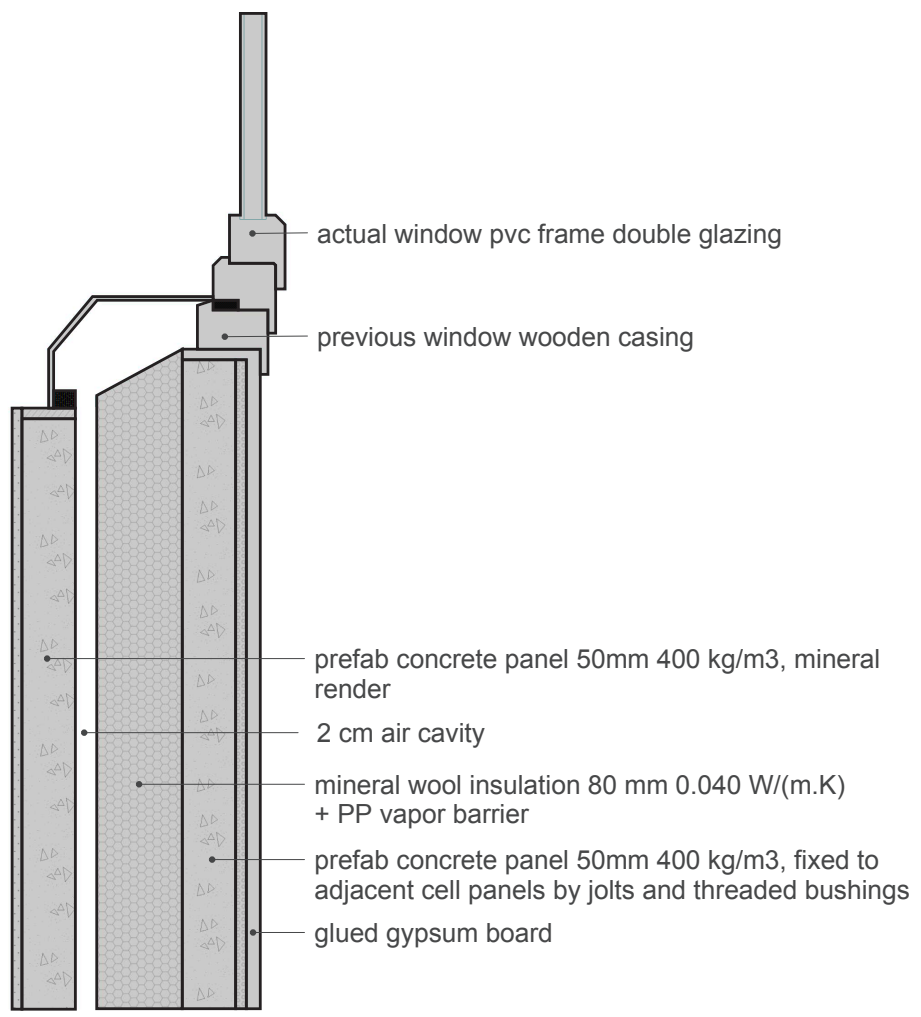


EXISTING



COLOR CODE

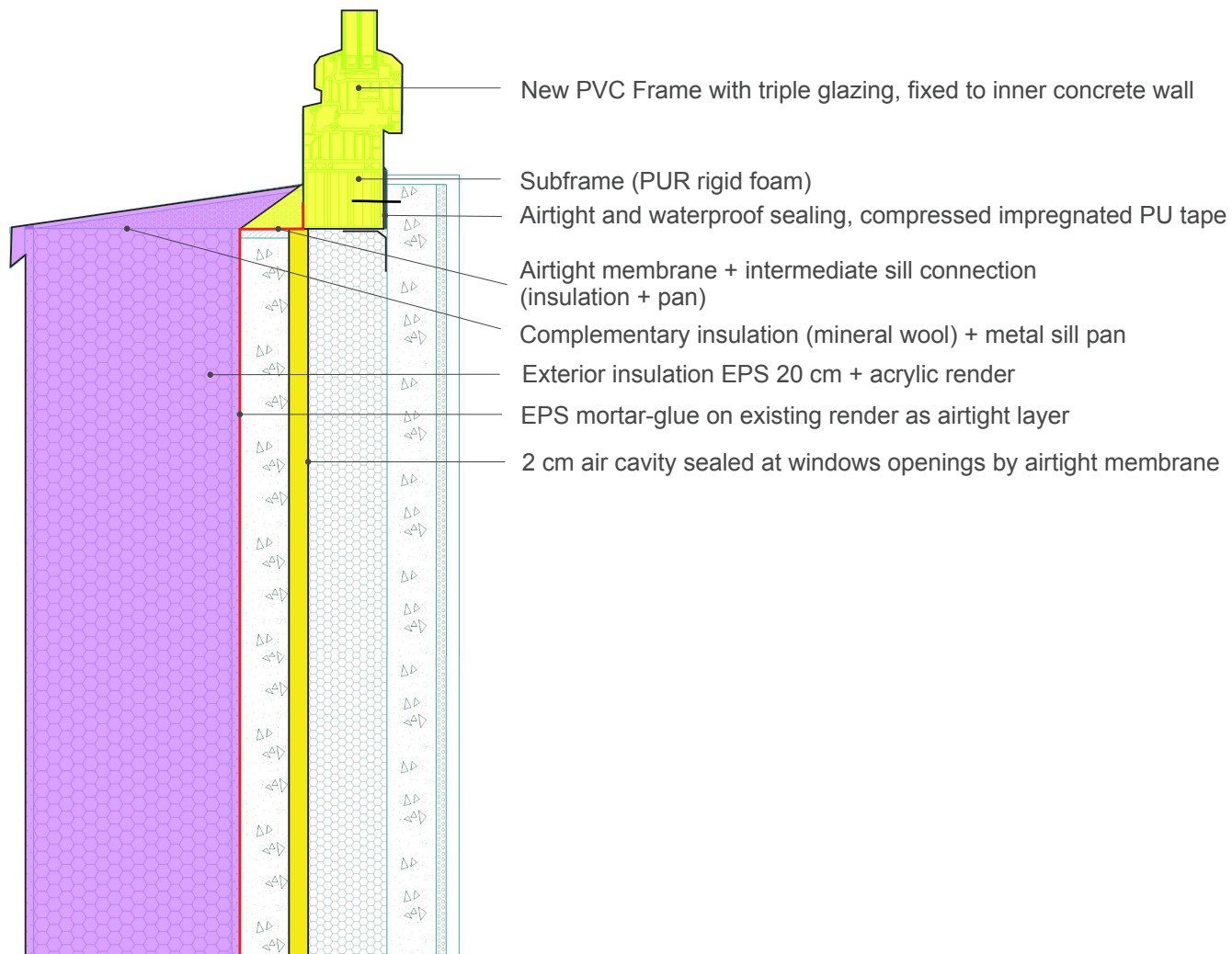
- Existing building
- Step 1
- Step 2
- Step 3
- Step 4
- temporary works (in between steps)

Airtight layer

DESCRIPTION/CHALLENGES

NOTES

1st STEP and 2nd STEP



Scale 1:5

Author Simon Camal

Date 10.06.2015



COLOR CODE

Existing building

Step 1

Step 2

Step 3

Step 4

temporary works (in between steps)

Airtight layer

DESCRIPTION/CHALLENGES

Ensure airtightness at air cavity before mounting new windows

NOTES

Airtight layer placed on the outer face of the masonry during the 2nd step (ETICS)

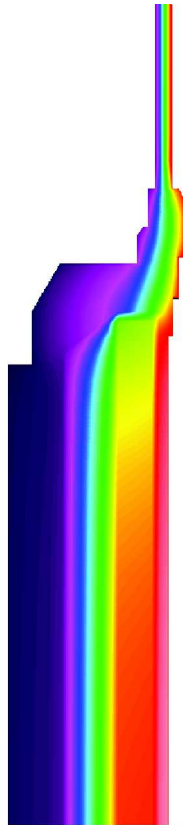
Case Study_05_Courcelles_France

WIBO Detail: Wall / Window - THERM

Scale	not to scale
Author	Simon Camal
Date	15.07.2015

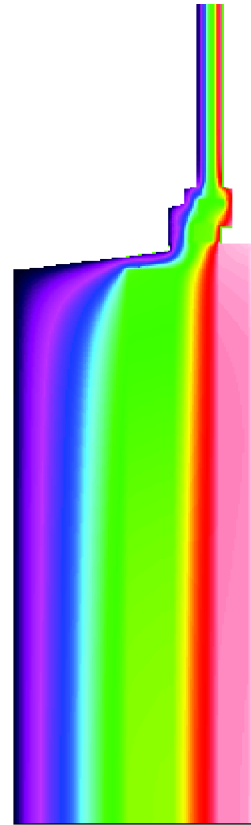


EXISTING



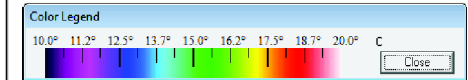
Total Heat Flux [W/m²] = 21.28
 Ψ - value [W/mK] = 0.204

Final Step



Total Heat Flux [W/m²] = 13.6
 Ψ - value [W/mK] = 0.049

COLOR CODE



DESCRIPTION/CHALLENGES



Co-funded by the Intelligent Energy Europe Programme of the European Union

The sole responsibility for the content of this publication lies with the authors. It does not necessarily reflect the opinion of the European Union. Neither the EACI nor the European Commission are responsible for any use that may be made of the information contained therein.

EuroPHit