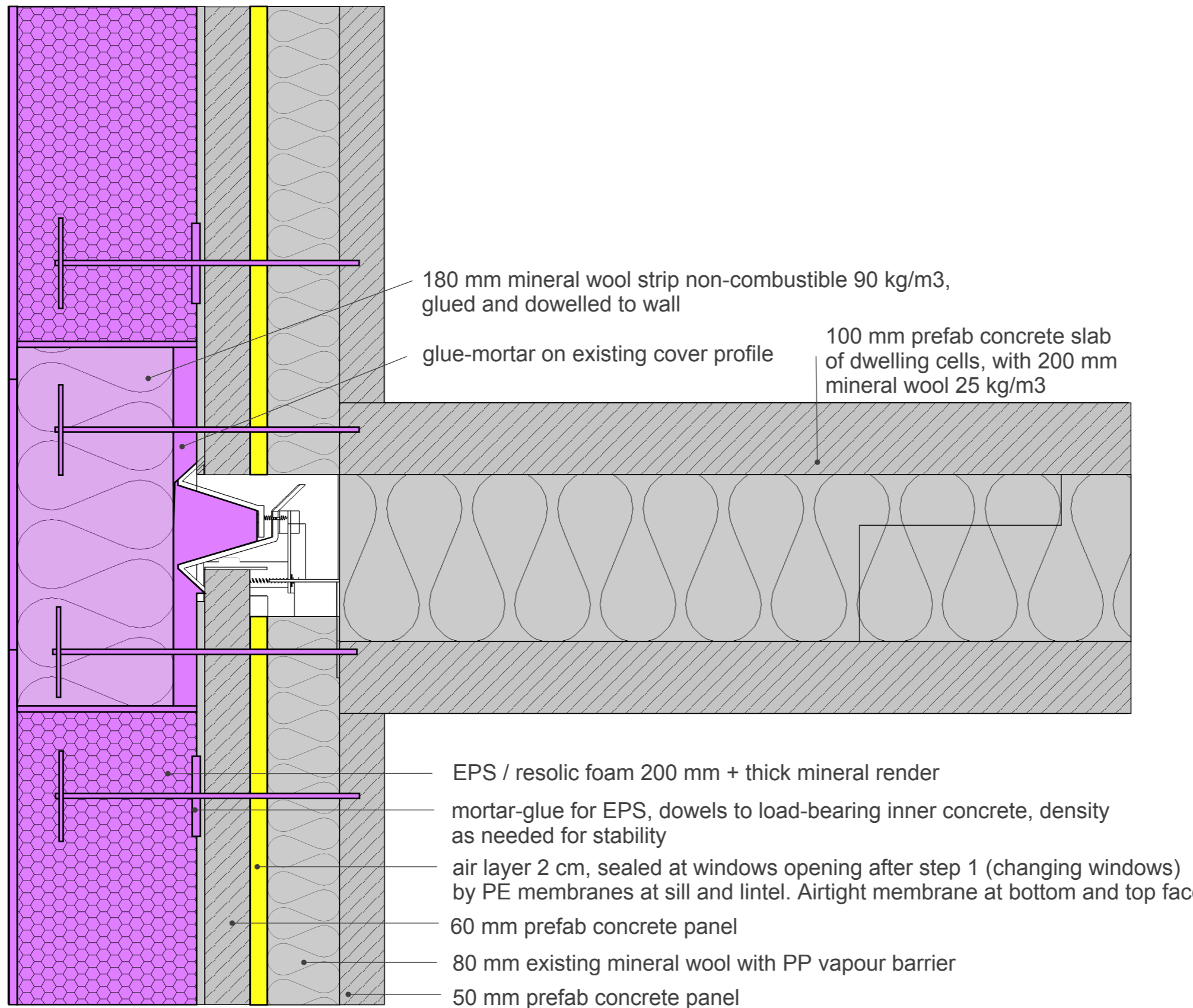


Detail: Intermediate Slab

2<sup>nd</sup> STEP



COLOR CODE

Existing building

Step 1

Step 2

Step 3

Step 4

temporary works (in between steps)

Airtight layer

DESCRIPTION/CHALLENGES

Glued and doweled EPS / resolic foam with thick render. Resolic foam is energy efficient with 0.022 W/m.K and does not require non combustible insulation strip between levels.

NOTES

Mineral wool strip between levels to be in accordance with french fire regulation for multi family dwellings (IT249)