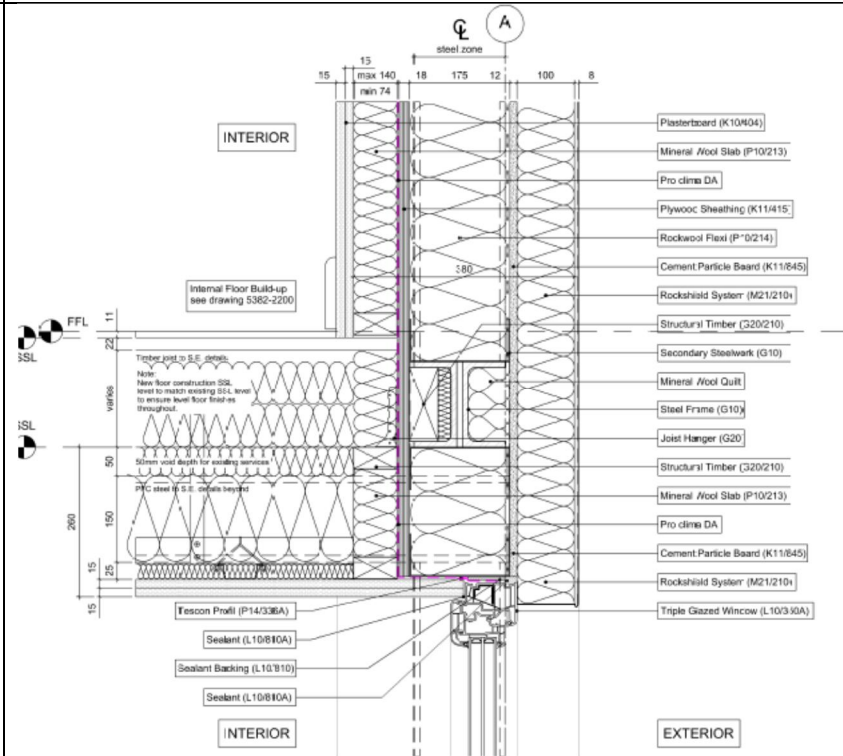


CS14_Wilmcote House_United Kingdom

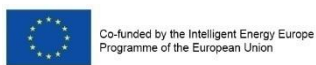
Author	Steven Stenlund	BRE
Date	March 2015	

1.2.1 Tie back beams at intermediate floor level



COLOUR CODE

DESCRIPTION/CHALLENGES



The sole responsibility for the content of this publication lies with the authors. It does not necessarily reflect the opinion of the European Union. Neither the EACI nor the European Commission are responsible for any use that may be made of the information contained therein.



CS14_Wilmcote House_United Kingdom

Author Steven Stenlund BRE

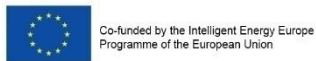
1.2.1 Tie back beams at intermediate floor level – site photo

Date March 2015

BEFORE

AFTER

DESCRIPTION/CHALLENGES



The sole responsibility for the content of this publication lies with the authors. It does not necessarily reflect the opinion of the European Union. Neither the EACI nor the European Commission are responsible for any use that may be made of the information contained therein.

EuroPHit

CS14_Wilmcote House_United Kingdom

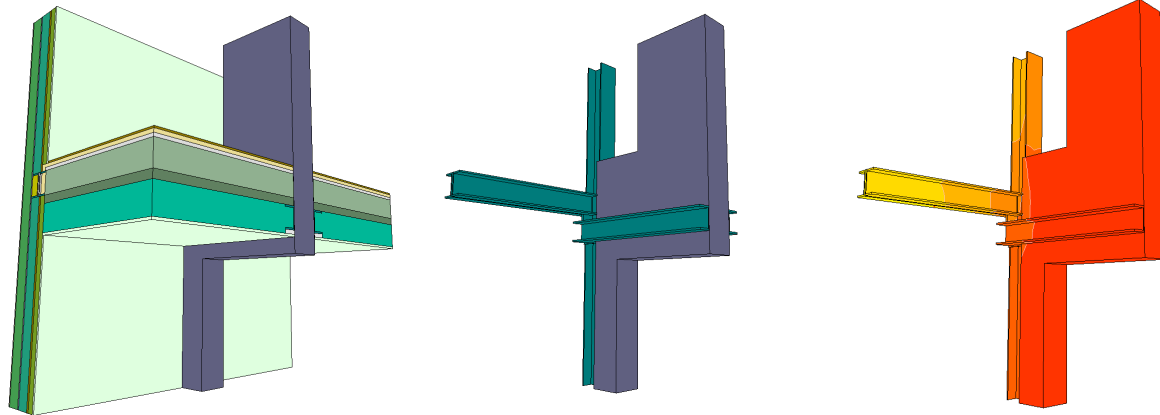
Author Steven Stenlund BRE

1.2.1 Tie back beams at intermediate floor level – Thermal model

Date March 2015

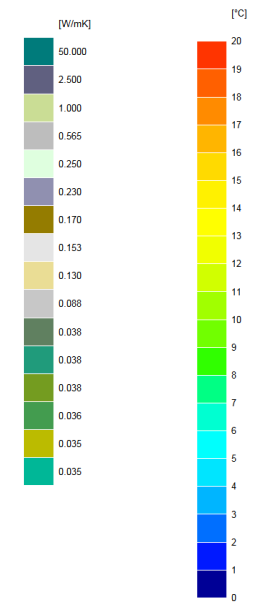
No pre-refurbishment thermal modelling undertaken

FINAL STEP



χ -value = 0.007 W/K (each tie back beam)

Colour code





Co-funded by the Intelligent Energy Europe
Programme of the European Union

The sole responsibility for the content of this publication lies with the authors.
It does not necessarily reflect the opinion of the European Union. Neither the
EACI nor the European Commission are responsible for any use that may be
made of the information contained therein.

EuroPHit