

# EuroPHit\_OP25\_IGPH\_Stacken\_Sweden

Scale

1:10 @ A4

Author

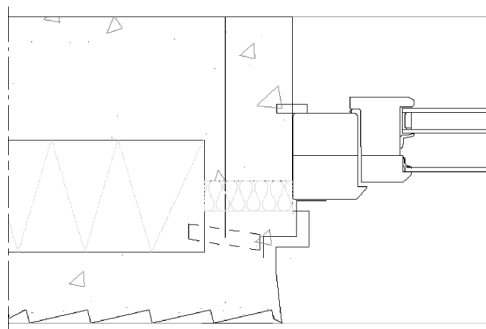
Ingo Theoboldt

Date

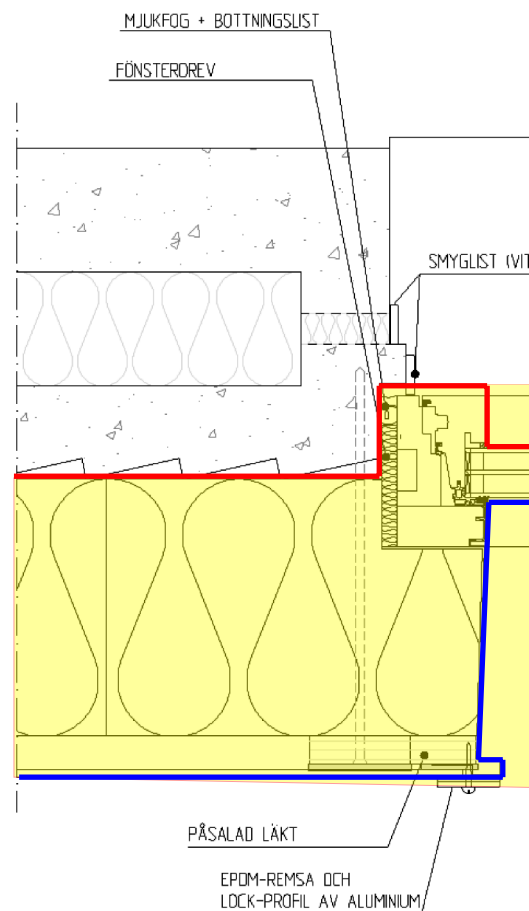


Window fitting horizontal & PV

EXISTING



1 STEP



## COLOR CODE

Existing building

Step 1

Step 2

Step 3

Step 4

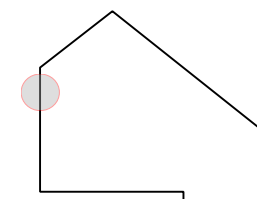
temporary works  
(in between steps)

Airtight layer

Water/Windtight layer

## DESCRIPTION/CHALLENGES

Overlapping the facade insulation over the window frame reduces the  $\Psi_{i(install)}$ -value.



Co-funded by the Intelligent Energy Europe  
Programme of the European Union

The sole responsibility for the content of this publication lies with the authors. It does not necessarily reflect the opinion of the European Union. Neither the EACI nor the European Commission are responsible for any use that may be made of the information contained therein.

**EuroPHit**